

# LabSolutions DB LC/GC

## Version 6.110

### Database Edition

### Readme

*Last updated: July 13, 2021*

---

## Table of Contents

1. Overview.....	8
2. Contents of Installation disk .....	8
3. LabSolutions DB LC/GC Feature Enhancements.....	10
3.1 Version 6.01 Feature Enhancements .....	10
3.1.1 Support for SIL-30ACMP and CTO-30AS.....	10
3.1.2 Improving the Peak Integration .....	10
3.1.3 Other Enhancements.....	10
3.2 Version 6.1 Feature Enhancements .....	10
3.2.1 Support for 64-bit Windows.....	10
3.2.2 Support for GC-2025.....	10
3.2.3 Improving the execution speed .....	10
3.3 Version 6.11 Feature Enhancements .....	11
3.3.1 Support for SPD-M30A.....	11
3.3.2 Support for 4 channel wavelength acquisition .....	11
3.3.3 Support for multiple ovens.....	11
3.3.4 Support for solvent blending.....	11
3.3.5 Support for Intelligent Peak Deconvolution Analysis (i-PDeA).....	11
3.3.6 Support for HS-20 .....	11
3.4 Version 6.11 SP1 Feature Enhancements .....	11
3.4.1 PDA Intelligent Dynamic Range Extension Calculator (i-DReC) .....	11
3.4.2 Improvement the Loading of PDA data file .....	12
3.4.3 Support for LabSolutions SIMDIS GC Software .....	12
3.4.4 Support for BID Detector (GC).....	12
3.5 Version 6.11 SP2 Feature Enhancements .....	12
3.5.1 Improving the SPD-M30A Time Constant Settings .....	12
3.5.2 Support for LC-20ADXR LPGE Mode .....	12
3.6 Version 6.20 SP2 Feature Enhancements .....	13
3.6.1 Improving the Multi Data Report.....	13

3.6.2	Support for the Agilent Technologies LC Systems.....	13
3.6.3	Support for LC-20ADXR Compressibility Setting.....	13
3.6.4	Support for LC-20AP LPGE Mode.....	13
3.6.5	Improving the Quant Browser .....	13
3.7	Version 6.22 Feature Enhancements .....	13
3.7.1	Support for LabSolutions GPC Software .....	13
3.7.2	Support for PDA Detector 2D Mode (SPD-M30A) .....	14
3.7.3	Overlapped Injection (SIL-30AC) .....	14
3.8	Version 6.31 Feature Enhancements .....	14
3.8.1	Support for the integrated LC “Nexera-i (LC-2040)” / “Prominence-i (LC-2030)” 14	
3.8.2	Control Panel Graphical User Interface (GUI) for LC-2030/LC-2040, CBM-20A 15	
3.8.3	Quick Batch (LC-2030/LC-2040, CBM-20A) .....	15
3.8.4	Support for RID-20A.....	15
3.8.5	Support for GC-2018.....	16
3.8.6	Improving search functions in the data explorer .....	16
3.8.7	Additional functions for Multi Data Report.....	16
3.8.8	Improving the Quant Browser .....	16
3.8.9	Other Enhancements .....	16
3.9	Version 6.40 Feature Enhancements .....	17
3.9.1	Support for the Agilent Technologies GC Systems .....	17
3.9.2	Agilent-LC/Agilent-GC analysis application Feature Enhancements .....	17
3.10	Version 6.41 Feature Enhancements .....	17
3.10.1	Support for LC-20AR.....	17
3.10.2	Support for ECD-EX(GC) .....	17
3.11	Version 6.42 Feature Enhancements .....	17
3.11.1	Support for the Supercritical Fluid Chromatography system.....	17
3.11.2	Support for HS-10.....	18
3.11.3	Support for CBM-201m.....	18
3.11.4	Improving U/I for the Manual Integration.....	18
3.11.5	Improving U/I for the Relative Retention Time Method.....	18
3.11.6	Improving for the Data Manager.....	18
3.11.7	Upgrade Agilent Driver .....	18
3.11.8	Support for communication with GC-2010(Plus) via GCMS .....	18
3.11.9	Method ID Feature Enhancement.....	18
3.11.10	Other Enhancements .....	19
3.12	Version 6.43 SP1 Feature Enhancements .....	19
3.12.1	Improving the Multi Data Report.....	19

3.12.2	Improving the PC Information.....	19
3.13	Version 6.50 Feature Enhancements .....	19
3.13.1	Report Set Feature Enhancement .....	19
3.13.2	Report Confirmation Feature Enhancement .....	19
3.13.3	Method Report Feature Enhancement.....	19
3.13.4	Improving the Log Browser.....	19
3.13.5	Improving the Data Manager.....	20
3.13.6	Improving the Project Administration and the User Administration.....	20
3.13.7	Support for LC-20Ai.....	20
3.13.8	Support for LC-2030C LT/LC-2040C LT .....	20
3.13.9	Improving U/I for the Manual Integration (Additional) .....	20
3.13.10	"Method Transfer" software is included in installation disk.....	21
3.13.11	Support for FPD and ECD detector .....	21
3.13.12	Other Enhancements .....	21
3.14	Version 6.60 Feature Enhancements .....	23
3.14.1	Improving the Multi Data Report.....	23
3.14.2	Support for SPD-30AM.....	23
3.14.3	Support for Nexera-i MT .....	23
3.14.4	Improving S/N Calculation.....	23
3.15	Version 6.70 Feature Enhancements .....	23
3.15.1	Improving the processing speed.....	23
3.15.2	Support for Spectrum Scan with RF-20A/RF-20AXS connected to i-Series .....	24
3.15.3	Improved Multi-Wavelength Mode .....	24
3.15.4	Injection Volume Setting in Method .....	24
3.16	Version 6.71 Feature Enhancements .....	24
3.16.1	Support for Windows 10 .....	24
3.16.2	Support for Electronic License Authentication System .....	24
3.16.3	Support for Multi Data Register Option .....	24
3.16.4	Support for AOC-5000/6000 .....	24
3.16.5	Feature Enhancements for GC-2018.....	25
3.16.6	Support for LabSolutions Balance.....	25
3.16.7	Other Enhancements.....	25
3.17	Version 6.72 SP1 Feature Enhancements .....	25
3.17.1	Improved User Administration .....	25
3.17.2	Improved Signature .....	25
3.17.3	Improved Project Administration .....	25
3.17.4	Improved File Administration.....	26
3.17.5	Improved Backup and Restore.....	26
3.17.6	Improved Data Manager .....	26

3.17.7	Improved Log Browser.....	26
3.17.8	Improved Report Set.....	26
3.17.9	Improved Audit Trail Log .....	27
3.17.10	Support for Nexera UC/s.....	27
3.17.11	Support for Method Scouting Solution .....	27
3.17.12	Improved Batch Processing .....	28
3.17.13	Other Enhancements .....	28
3.18	Version 6.80 Feature Enhancements .....	29
3.18.1	Support for GC-2030.....	29
3.18.2	Support for the Instrument Control Panel Graphical User Interface (GC-2030, 2010, 2014, 2025, 2018).....	29
3.18.3	Support for Quick Batch (GC).....	29
3.18.4	New integration algorithm (i-PeakFinder) .....	29
3.18.5	PDA deconvolution algorithm (i-PDeA II).....	29
3.18.6	Addition of Constant Flowrate Calculation Program Function (GC-2010, GC-2014, GC-2025).....	29
3.19	Version 6.82 Feature Enhancements .....	29
3.19.1	Support for LC-2030 Plus / LC-2040 Plus series (LC).....	29
3.19.2	Support for the SIL-30ACFV Flow Vial Autosampler (LC) .....	29
3.19.3	Support for Windows 10 by Agilent Technologies LC/GC systems .....	30
3.19.4	Improved Column Management Function .....	30
3.19.5	Improved Log/Log Browser .....	30
3.19.6	Added System Backup/Restore Function .....	30
3.19.7	Improved Project Management Function.....	30
3.19.8	Improved User Administration.....	31
3.19.9	Improved Report Set.....	32
3.19.10	Improved LIMS Connecting Option.....	32
3.19.11	Improved Data Manager / Data Explorer.....	32
3.19.12	Other Enhancements .....	32
3.20	Version 6.83 Feature Enhancements .....	32
3.20.1	Support for Nexgen GC (CAGC-100).....	32
3.20.2	Support for GC-2010 Pro .....	32
3.21	Version 6.86 SP2 Feature Enhancements .....	32
3.21.1	Support for Thermo Scientific LC/GC Systems .....	32
3.21.2	Improved Agilent Technologies LC/GC systems control.....	32
3.21.3	Improvement of Data Analysis .....	33
3.21.4	Improved Multi Data Register.....	33
3.21.5	Support for FRC-40 / LH-40 (LC) .....	33
3.22	Version 6.86 SP3 Feature Enhancements .....	33

3.22.1	Support for Nexis SCD-2030 (GC) .....	33
3.23	Version 6.87 Feature Enhancements .....	33
3.23.1	Support for Nexera Series (LC).....	33
3.23.2	Support for mobile phase monitor and improved mobile phase volume management (LC) .....	33
3.23.3	Improved Startup function.....	34
3.23.4	Improved Shutdown function.....	34
3.23.5	Improved autopurge function (LC) .....	34
3.23.6	Auto-Recovery function for pump pulsation (LC).....	35
3.23.7	Enhancement of column management function (LC).....	35
3.23.8	Vial Skip Function (LC) .....	35
3.23.9	Enhancement of parts management functions (LC) .....	35
3.23.10	Support for the validation support software “A-IQOQ” version 2.0.0 .....	36
3.23.11	Other Enhancements .....	36
3.24	Version 6.89 Feature Enhancements .....	36
3.24.1	Support for Preparative SFC system (LC) .....	36
3.24.2	Improved Creation of Report Set .....	36
3.24.3	Operation Log for LC-2010 (LC) .....	36
3.24.4	Other Enhancements .....	36
3.25	Version 6.92 Feature Enhancements .....	36
3.25.1	Support for Packed column of GC-2030 (GC).....	36
3.25.2	Support for Gas Selector of GC-2030 (GC).....	37
3.25.3	Support for Nexera UC/s of SIL-40 series (LC) .....	37
3.25.4	Other Enhancements .....	37
3.26	Version 6.101 Feature Enhancements .....	37
3.26.1	Support for ELSD-LT III (LC).....	37
3.26.2	Support for CRB-40 (LC) .....	37
3.26.3	Improved User Administration.....	37
3.27	Version 6.103 Feature Enhancements .....	37
3.27.1	Support for LC-2050/LC-2060 (LC) .....	37
3.27.2	Improved Report Set.....	37
3.27.3	Improved User Administration.....	38
3.27.4	Improved Multi Data Register .....	38
3.27.5	Other Enhancements .....	38
3.28	Version 6.106 Feature Enhancements .....	39
3.28.1	Support for AOC-30 of GC-2030 (GC).....	39
3.28.2	Added “Vial Skip” Function (GC).....	39
3.28.3	Added "zero after Start" Function (GC) .....	39
3.28.4	Control Panel Enhancements (GC).....	39

3.28.5	Other Enhancements (GC) .....	39
3.29	Version 6.110 Feature Enhancements .....	40
3.29.1	Supports the control function of OCI-2030NX of GC-2030 (GC) .....	40
3.29.2	Added "CleanPilot" function (GC) .....	40
3.29.3	Added HS-20 interrupt analysis function (GC) .....	40
3.29.4	Other Enhancements .....	40
4.	LabSolutions DB LC/GC Corrected Defects List .....	41
4.1	Version 6.01 Corrected Defects List .....	41
4.2	Version 6.01 SP1 Corrected Defects List .....	41
4.3	Version 6.1 Corrected Defects List .....	41
4.4	Version 6.11 Corrected Defects List .....	45
4.5	Version 6.11 SP1 Corrected Defects List .....	47
4.6	Version 6.11 SP2 Corrected Defects List .....	48
4.7	Version 6.20 SP2 Corrected Defects List .....	50
4.8	Version 6.22 Corrected Defects List .....	53
4.9	Version 6.22 SP1 Corrected Defects List .....	54
4.10	Version 6.31 Corrected Defects List .....	55
4.11	Version 6.40 Corrected Defects List .....	57
4.12	Version 6.40 SP1 Corrected Defects List .....	58
4.13	Version 6.41 Corrected Defects List .....	58
4.14	Version 6.42 Corrected Defects List .....	60
4.15	Version 6.43 SP1 Corrected Defects List .....	62
4.16	Version 6.43 SP2 Corrected Defects List .....	64
4.17	Version 6.50 Corrected Defects List .....	64
4.18	Version 6.60 Corrected Defects List .....	67
4.19	Version 6.70 Corrected Defects List .....	69
4.20	Version 6.71 Corrected Defects List .....	72
4.21	Version 6.72 SP1 Corrected Defects List .....	74
4.22	Version 6.80 Corrected Defects List .....	77
4.23	Version 6.82 Corrected Defects List .....	79
4.24	Version 6.83 Corrected Defects List .....	81
4.25	Version 6.86 SP2 Corrected Defects List .....	84
4.26	Version 6.86 SP3 Corrected Defects List .....	89
4.27	Version 6.87 Corrected Defects List .....	89
4.28	Version 6.87 SP1 Corrected Defects List .....	92
4.29	Version 6.89 Corrected Defects List .....	93
4.30	Version 6.92 Corrected Defects List .....	95
4.31	Version 6.101 Corrected Defects List .....	99
4.32	Version 6.103 Corrected Defects List .....	101

4.33	Version 6.106 Corrected Defects List .....	106
4.34	Version 6.106 SP1 Corrected Defects List .....	107
4.35	Version 6.110 Corrected Defects List .....	107

---

## 1. Overview

This file describes supplementary information about purpose and usage of LabSolutions DB LC/GC.

## 2. Contents of Installation disk

The installation disk stores the installation files and documents under the following folders.

[Installation disk Root]

├─Activation	[Software License Management Tool Installer]
├─AdobeReader	
│ └─cn	[Adobe Acrobat Reader Chinese Installer]
│ └─en	[Adobe Acrobat Reader English Installer]
│ └─jp	[Adobe Acrobat Reader Japanese Installer]
├─Auxiliary	[Auxiliary tools for installation]
├─CBM102	[CBM-102 Ver. 2.1 update program]
├─Dongle	[Dongle driver installer]
├─DotNET	[.NET Framework installer]
├─Ja	[AutoRun Resource Folder]
├─zh-CHS	[AutoRun Resource Folder]
├─JSharp	[MS Visual J# installer]
├─LabSolutions	[LabSolutions installer]
│ └─ManualDB	
│ │ └─cn	[Chinese Instruction Manuals]
│ │ └─en	[English Instruction Manuals]
│ │ └─jp	[Japanese Instruction Manuals]
│ └─Sample	[Sample files (Reserved)]
├─LabSolutionsLCGC	[LabSolutions LCGC installer]
│ └─Supplement	[Other supplemental files]
│ └─Sample	[Sample files (Reserved)]
│ └─Template	[Template files (Reserved)]
│ │ └─cn	[Chinese template files]
│ │ └─en	[English report template files]
│ │ └─jp	[Japanese report template files]
├─LabSolutionsMDR	[LabSolutions Multi Data Register installer]
├─LabSolutionsMV	[LabSolutionsMV installer]
├─MDRXml	[Multi Data Report setting XML]
├─MethodTransfer	[Method Transfer program]

—MicrosoftSQLServer2014Express	[SQL Server 2014 Express Edition installer]
—MicrosoftSQLServer2017Express	[SQL Server 2017 Express Edition installer]
—MSXML	[MSXML 4.0 installer]
—ReportViewer	[Microsoft ReportViewer installer]
—SkyPDFSilent	
—x64	[SkyPDF installer for 64-bit Windows]
—x86	[SkyPDF installer for 32-bit Windows]
—vcredist	[MFC Runtime]
—VersionUpTool	[LabSolutions Upgrade Tool for LabSolutions]

### 3. LabSolutions DB LC/GC Feature Enhancements

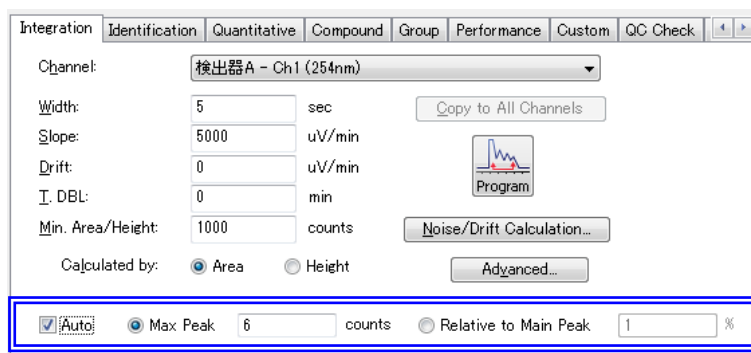
#### 3.1 Version 6.01 Feature Enhancements

##### 3.1.1 Support for SIL-30ACMP and CTO-30AS

LabSolutions supports SIL-30ACMP and CTO-30AS. To control these instruments, the ROM version of CBM-20A/lite should be updated to Ver.2.20.

##### 3.1.2 Improving the Peak Integration

In Data Analysis, the peak integration of LC/GC chromatogram can be done by specifying the maximum number of peaks or relative threshold to the main peak.



##### 3.1.3 Other Enhancements

- a. By selecting the [Move Chromatogram] menu in the Data Acquisition, Data Analysis, and PDA Data Analysis Windows, chromatogram of a chromatogram label selected on the Chromatogram View can be moved by dragging mouse.
- b. [Area %] can be displayed on the peak top comment of the analysis window.

#### 3.2 Version 6.1 Feature Enhancements

##### 3.2.1 Support for 64-bit Windows

LabSolutions LC/GC supports 64-bit version of Windows 7 Professional.

##### 3.2.2 Support for GC-2025

LabSolutions supports GC-2025.

##### 3.2.3 Improving the execution speed

The execution speed of Postrun Batch and Data Explorer has improved.

### 3.3 Version 6.11 Feature Enhancements

#### 3.3.1 Support for SPD-M30A

LabSolutions supports SPD-M30A.

#### 3.3.2 Support for 4 channel wavelength acquisition

By using RF-20A/AXS, LabSolutions becomes supporting data acquisition with up to 4 channels of different excitation wavelength and emission wavelength. (Previous version supported data acquisition with up to 2 channels.)

#### 3.3.3 Support for multiple ovens

By using CBM-20A/lite, LabSolutions supports up to 4 ovens. Application systems such as using a post-column are available.

#### 3.3.4 Support for solvent blending

LabSolutions becomes supporting high-pressure gradient analysis by specifying the mixed solution ratio of up to 4 types of mobile phase solution on each pump and using the mobile phase blended in the pump.

When using the Version 6.11 Feature Enhancements, please update ROM versions of CBM-20A/lite and other instruments referring to following table.

#	Item	CBM-20A/lite	Instrument version
1	SPD-M30A	Ver. 2.40 or later	
2	4 channel wavelength acquisition		RF-20A/AXS Ver. 1.10 or later
3	Multiple ovens		
4	Solvent blending		LC-30AD Ver. 2.20 or later

#### 3.3.5 Support for Intelligent Peak Deconvolution Analysis (i-PDeA)

i-PDeA is the function to distinguish unseparated two peaks. By peak deconvolution theory at specific wavelength, each component can be detected by two separate chromatograms.

#### 3.3.6 Support for HS-20

LabSolutions supports HS-20 (a head space sampler).

### 3.4 Version 6.11 SP1 Feature Enhancements

#### 3.4.1 PDA Intelligent Dynamic Range Extension Calculator (i-DReC)

i-DReC function becomes usable for the PDA data.

When the peak intensity at the retention time exceeds the specified threshold, the

multi-chromatogram wavelength is automatically shifted to a lower absorption wavelength to calculate the peak area and height, and then the peak area and height at the target wavelength are obtained by multiplying the absorption ratio between two wavelengths of the sensitivity correction spectrum extracted from the peak shoulder by this function.

### 3.4.2 Improvement the Loading of PDA data file

In application windows like Quant Browser and Calibration Curve, the number of PDA data files which can be loaded simultaneously increased.

### 3.4.3 Support for LabSolutions SIMDIS GC Software

LabSolutions supports SIMDIS GC software (Option).

### 3.4.4 Support for BID Detector (GC)

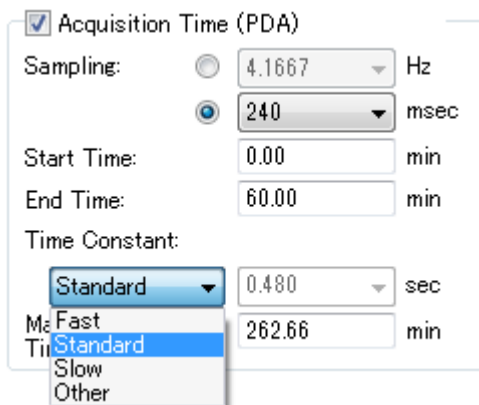
LabSolutions supports BID detector for GC-2010Plus.

## 3.5 Version 6.11 SP2 Feature Enhancements

### 3.5.1 Improving the SPD-M30A Time Constant Settings

The setting method of the "Time Constant" was changed by the instrument parameter of SPD-M30A.

Although it was set up numerically before, it was made to select from "Standard, Fast, Slow, and Other". When "Other" is selected, it can set up numerically like before.



Acquisition Time (PDA)

Sampling:  4.1667 Hz  240 msec

Start Time: 0.00 min

End Time: 60.00 min

Time Constant:

Standard 0.480 sec

Fast 262.66 min

Slow

Other

### 3.5.2 Support for LC-20ADXR LPGE Mode

LabSolutions supports LC-20ADXR LPGE Mode.

When using this function, please update ROM versions of CBM-20A/lite and LC-20ADXR referring to the following table.

#	Item	CBM-20A/lite	Instrument version
1	Support for LC-20ADXR LPGE Mode	Ver. 2.50 or later	LC-20ADXR Ver. 1.30 or later

### 3.6 Version 6.20 SP2 Feature Enhancements

#### 3.6.1 Improving the Multi Data Report

A function has been added to Multi Data Report so that Multi Data Report files can be created without using Microsoft Excel.

#### 3.6.2 Support for the Agilent Technologies LC Systems

LabSolutions can now be used to control Agilent Technologies LC systems.

#### 3.6.3 Support for LC-20ADXR Compressibility Setting

LabSolutions supports LC-20ADXR compressibility setting.

An optimal compressibility can be set as required type of mobile phase.

#### 3.6.4 Support for LC-20AP LPGE Mode

LabSolutions supports LC-20AP (the pump for preparative LC system) LPGE Mode.

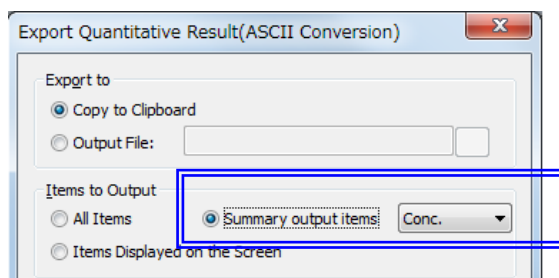
LPGE Mode can be used by connecting low-pressure gradient valve unit FCV-200AL to LC-20AP.

When using these Feature Enhancements (3.6.3, 3.6.4), please update ROM versions of CBM-20A/lite and other instruments referring to the following table.

#	Item	CBM-20A/lite	Instrument version
1	LC-20ADXR Compressibility Setting	Ver. 2.60 or later	LC-20ADXR Ver. 1.30 or later
2	LC-20AP LPGE Mode		LC-20AP Ver. 1.10 or later

#### 3.6.5 Improving the Quant Browser

In the Quant Browser, the summary output can be exported from the Export Quantitative Result window.



### 3.7 Version 6.22 Feature Enhancements

#### 3.7.1 Support for LabSolutions GPC Software

LabSolutions supports GPC software (Option).

### 3.7.2 Support for PDA Detector 2D Mode (SPD-M30A)

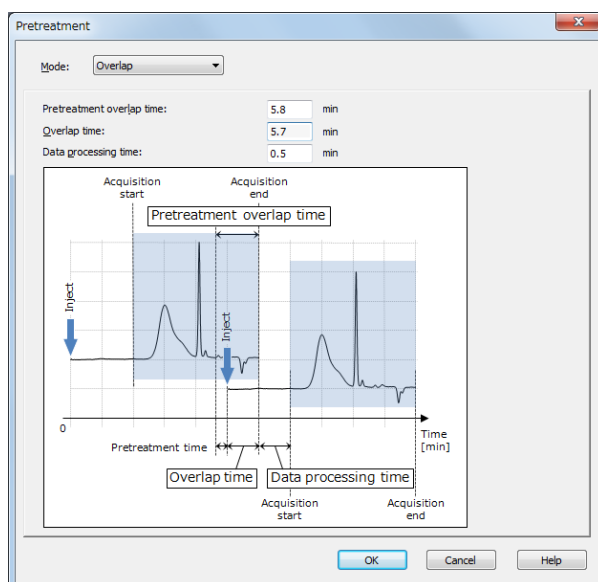
The PDA detector "SPD-M30A" was corresponded to 2D detector mode (the wavelength conditions of chromatogram are set up as a "channel", and only the data of the set-up channel is acquired).

The mode (3D/2D) is changed by the configuration of PDA detector.

### 3.7.3 Overlapped Injection (SIL-30AC)

In LC system using the autosampler SIL-30AC, the overlapped injection which shortens analysis time by injecting the next sample during analysis became possible.

It can be set up by the "Pretreatment" of the [Autosampler] tab in the Instrument Parameter View. And it is necessary to turn ON the checkbox "Start pretreatment for next sample during current data acquisition" with the [General] tab of the settings of Realtime Batch.



## 3.8 Version 6.31 Feature Enhancements

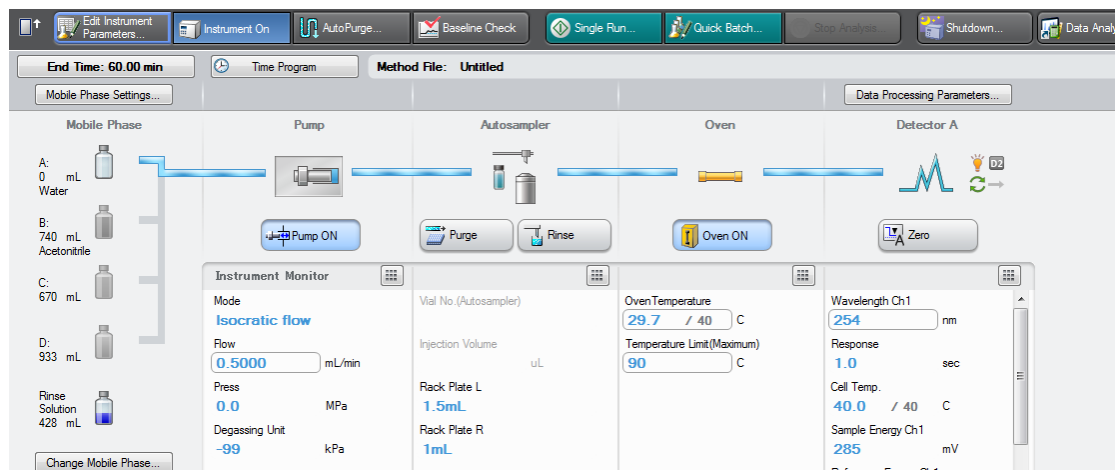
### 3.8.1 Support for the integrated LC "Nexera-i (LC-2040)" / "Prominence-i (LC-2030)"

Support for the integrated LC "Nexera-i (LC-2040)" / "Prominence-i (LC-2030)"

LabSolutions supports the integrated LC "Nexera-i (LC-2040/LC-2040C 3D)" and "Prominence-i" (LC-2030/LC-2030C/LC-2030C 3D). The PDA detector model "LC-2040C 3D" and "LC-2030C 3D (internal detector is the PDA detector)" support for PDA Detector 2D Mode.

### 3.8.2 Control Panel Graphical User Interface (GUI) for LC-2030/LC-2040, CBM-20A

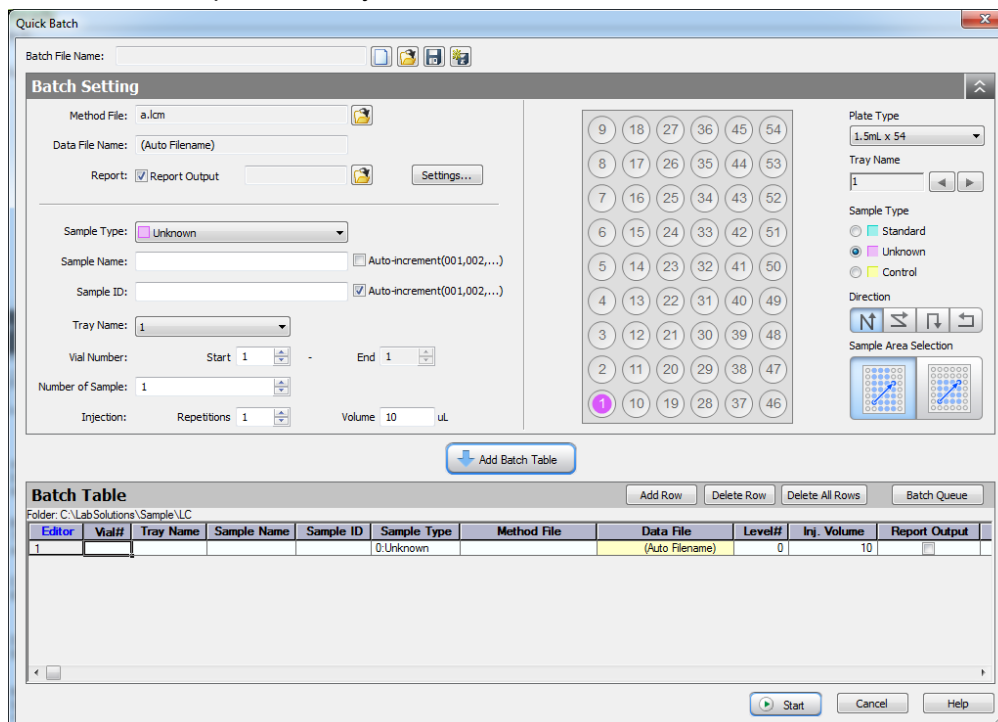
For LC-2030, LC-2040 and CBM-20A systems, LabSolutions can display the Control Panel GUI at the data acquisition window. The Control Panel makes it much easier to control instruments and to monitor instrument status with graphical view style.



You can also select the classical view style of [Instrument Parameter View] from the [View] > [Display Settings of Instrument Parameter View] menu on the Analysis Window.

### 3.8.3 Quick Batch (LC-2030/LC-2040, CBM-20A)

For LC-2030, LC-2040 and CBM-20A systems, "Quick Batch" function is available in the data acquisition window and realtime batch window. "Quick Batch" assists you to create the realtime batch sequence easily.



### 3.8.4 Support for RID-20A

LabSolutions supports RID-20A. To control RID-20A, please update ROM versions of CBM-20A/lite referring to the following table.

#	Item	CBM-20A/lite	Instrument version
1	Support for RID-20A	Ver. 2.80 or later	

### 3.8.5 Support for GC-2018

LabSolutions supports GC-2018.

### 3.8.6 Improving search functions in the data explorer

- Keyword and other items can be used for searching files in method • batch • report window in Data Explorer.
- The keyword can be edited from the Data Explorer.
- The setting of keyword candidate is expanded from 01~03 to all 20 items.

### 3.8.7 Additional functions for Multi Data Report

“LEN” and “VALUE” functions are available from this version.

### 3.8.8 Improving the Quant Browser

- 1) The shortcut key operation (Ctrl+C, Ctrl+V) is now available in the [Quantitative Results View] in the Quant Browser.
- 2) The data file can be removed by selecting multiple rows and pressing [Delete] key in [Quantitative Results View] in the Quant Browser.
- 3) The [Full Size], [Normal Size] and [Wide Size] can be switched in each pane in the Quant Browser.
- 4) When using the Audit Trail function in the Quant Browser, an option is now available which enables to apply the reason for changes to multiple files at once.

### 3.8.9 Other Enhancements

- 1) Two user rights, "Edit Report Format (Graph Range)" and "Edit Method (New File)" have been added. With the "Edit Method (New File)" user right, once a new method file has been edited and then saved, the user can no longer edit the method file.
- 2) In the “Run Mode” of batch table, an option of “Wait after downloading instrument parameters” is available for the settings of “Wait before acquisition” and “Pause before acquisition”.
- 3) From this version, Startup can be added to the batch queue by clicking the Startup button in the toolbar during analysis.
- 4) Mobile Phase Remaining and Mobile Phase Capacity Ratio(%) for the pumps below can be monitored on the Instrument Monitor.

LC-2010, LC-20AD, LC-20ADXR, LC-20AT, LC-20AB, LC-20AP, LC-30AD

- 5) Rinse Remaining and Rinse Capacity Ratio for the autosamplers below can be monitored on the Instrument Monitor.

LC-2010, SIL-20A, SIL-20AC, SIL-20AXR, SIL-20ACXR, SIL-30AC, SIL-30ACMP

### 3.9 Version 6.40 Feature Enhancements

#### 3.9.1 Support for the Agilent Technologies GC Systems

LabSolutions can be used to control Agilent Technologies GC systems now.

#### 3.9.2 Agilent-LC/Agilent-GC analysis application Feature Enhancements

Agilent-LC/Agilent-GC analysis now supports the following functions.

- 1) In previous versions, Agilent-LC/Agilent-GC analysis application's Edit Current Batch Function only support for additional batch lines, now it also possible for unanalyzed batch lines.
- 2) Agilent-LC/Agilent-GC analysis application now support for take over acquisition. The user could take over instrument according to following steps: right-click instrument icon in main window, and then select "take over acquisition".
- 3) Agilent-LC/Agilent-GC analysis application now supports for priority analyses.
- 4) When network trouble occurred in LabSolutions Server, Agilent-LC/Agilent-GC analysis application could start analysis in Acquisition Controller.
- 5) Agilent-LC/Agilent-GC analysis application now supports to create Multi Data Report files from batch analyses directly.

### 3.10 Version 6.41 Feature Enhancements

#### 3.10.1 Support for LC-20AR

LabSolutions supports LC-20AR. To control LC-20AR, please update ROM versions of CBM-20A/lite referring to the following table.

#	Item	CBM-20A/lite	Instrument version
1	Support for LC-20AR	Ver. 2.90 or later	

#### 3.10.2 Support for ECD-EX(GC)

LabSolutions supports ECD-EX detector for GC-2010Plus.

### 3.11 Version 6.42 Feature Enhancements

#### 3.11.1 Support for the Supercritical Fluid Chromatography system

LabSolutions supports the Supercritical Fluid Chromatography system.

### 3.11.2 Support for HS-10

LabSolutions supports HS-10 (a head space sampler).

### 3.11.3 Support for CBM-201m

LabSolutions supports CBM-201m (A/D Converter).

### 3.11.4 Improving U/I for the Manual Integration

The user interface of Manual Integration was improved.

"Auto Mode" (the command was chosen automatically) and "Popup Hint" (the operating method was indicated) etc. were added, and the usability improved fairly.

### 3.11.5 Improving U/I for the Relative Retention Time Method

When the Identification Method of the Identification parameter is

"Relative Retention Time",

"Retention Time Ratio" was added to the compound table.

### 3.11.6 Improving for the Data Manager

Following functions in the Data Manager are improved.

- 1) Print formats for Sample Information are possible to be edited and saved. "Edit Print Format (Data Manager)" right is added in the Rights List. And data files for printing can be selected in the Sample Information View.
- 2) Release File function is able to execute in the Data Manager. "Release File" right is added in the Rights List.
- 3) Past versions list of multiple files can be displayed in the Sample Information View at the same time.
- 4) Multiple PDF files for signatures can be printed at once.

### 3.11.7 Upgrade Agilent Driver

Agilent Drivers are upgraded. And Agilent-LC/Agilent-GC analysis now supports for new instruments and ROM Versions. Please refer to "Notice before Use" for more information about Agilent LC/GC systems.

### 3.11.8 Support for communication with GC-2010(Plus) via GCMS

LabSolutions can communicate with GC-2010(Plus) connected with GCMS. Without changing wiring, LabSolutions can acquire GC data. (It is necessary to install GCMSsolution too.)

### 3.11.9 Method ID Feature Enhancement

A Method file (Instrument Parameter, Data Processing Parameter, and Calibration Curve Information) used in Realtime Analysis and Postrun can be identified with following IDs. The each ID is displayed on Data Manager and Data Explorer and printed on the report. These IDs are updated when these parameters are modified.

- Instrument Method ID
- Data Processing Method ID
- Calibration Curve Information ID

### 3.11.10 Other Enhancements

- 1) A system administration log is recorded when system clock is changed.

## 3.12 Version 6.43 SP1 Feature Enhancements

### 3.12.1 Improving the Multi Data Report

“Template Name” can be used in the header and footer of the Multi Data Report without using Microsoft Excel.

Following modifications are added to Formula View Mode.

- 1) Row and column numbers are displayed in the Print and Print Preview.
- 2) “Draft” strings are removed from the background of a saved template file.

### 3.12.2 Improving the PC Information

OS Name is displayed in detail in the PC Information.

## 3.13 Version 6.50 Feature Enhancements

### 3.13.1 Report Set Feature Enhancement

A sequence of analysis data and log can be output to a report.

### 3.13.2 Report Confirmation Feature Enhancement

The confirmatory result for PDFs for Signatures can be recorded in the report.

### 3.13.3 Method Report Feature Enhancement

A report of the method file used in the Data Acquisition or Data Analysis can be registered with the data file. The method report can be used for the content of the Report Set.

### 3.13.4 Improving the Log Browser

- 1) The print format in the Log Browser is converted to tabular form.
- 2) The print format can be saved and selected in the Log Browser.

### 3.13.5 Improving the Data Manager

- 1) The print format can be saved and selected in the Data Manager.
- 2) Several data files can be signed at once in the Data Manager.

### 3.13.6 Improving the Project Administration and the User Administration

- 1) The following rights are added.
  - Add New Project
  - Delete Project
  - Change Project Settings
  - Unlink Files
  - Unlock Files

\* "Change Project Settings" right is separated to "Add New Project", "Delete Project", "Change Project Settings" from this version.
- 2) In the ER/ES mode, the reasons of deleting projects can be recorded.

### 3.13.7 Support for LC-20Ai

LabSolutions supports LC-20Ai of Bio-Inert HPLC solvent delivery unit. To control LC-20Ai, please update ROM versions of CBM-20A/lite referring to the following table.

#	Item	CBM-20A/lite	Instrument version
1	Support for LC-20Ai	Ver. 3.10 or later	

### 3.13.8 Support for LC-2030C LT/LC-2040C LT

LabSolutions supports LC-2030C LT/LC-2040C LT which is non-detector model for i-Series of Integrated HPLC and UHPLC Systems (LC-2030C and LC-2040C).

### 3.13.9 Improving U/I for the Manual Integration (Additional)

The user interface of Manual Integration was improved considerably in Ver.6.42. Additionally, the following features were improved.

- 1) "Select Peak" and "Reject Peak" on the [Zoom Chromatogram] has become possible not only on the [Data Analysis] window and the [PDA Data Analysis] window as of Ver.6.42, but also on the other windows. Also, "\*" mark is displayed on the top of selected peaks.
- 2) The cursor correspond to the state is displayed in auto mode and in the shortcut key operation.
- 3) Horizontal scroll, enlargement and reduction of the image can be performed by turning the mouse wheel not only in auto mode as of Ver.6.42, but also in the other modes.
- 4) Displayed data can be changed by up/down key when mouse is on the [Chromatogram View] in the [Quant Browser] window.

### 3.13.10 "Method Transfer" software is included in installation disk

"Method Transfer" software (Ver.1.01) is included in installation disk. "Method Transfer" is a software to convert a method conditions, gradient programs and flows, between two LC systems. "Method Transfer" converts the method conditions from one to the other by considering the difference of the LC system parameters such as delay volumes and column volumes.

### 3.13.11 Support for FPD and ECD detector

LabSolutions supports FPD and ECD detector for GC-2018.

### 3.13.12 Other Enhancements

#### 1) Function to change page by data on "Summary(Data)"

On Summary(Data) report, a function to change page by data is available. This function can be specified by checking the "Change page by data" checkbox in the "Display" tab in the properties for "Summary(Data)" report item.

#### 2) Function to output incremental report numbers for partially executed batch analysis

When batch analysis/postrun is partially executed with specified range, incremental report numbers 1, 2, 3... instead of the batch line numbers can be output in the each report header/footer in this version. To output the incremental number, use the \$Rep.Increment#\$ macro, which can be inserted by clicking the "Report#" button in the header/footer setting of the report format. The conventional \$Report#\$ macro (for outputting the batch row number), which had been inserted by clicking the "Report#" button in the previous versions, can be inserted by clicking the "Batch row number" button from this version.

#### 3) Chromatogram peak mark in the report

For the chromatogram peak detection mark, "bar" can be output as the mark type from this version. This can be specified in the chromatogram report item and each summary report item, "Peak Detection mark" setting in the properties.

#### 4) Function to quantitate the peaks with zero area(height)

The function to calculate the concentration of undetected compounds, with 0 value being applied to the calibration equation, is available from this version. This can be specified in the "Identification" tab of the data processing parameter.

#### 5) PDA multi-chromatogram extraction mode "Fine"

"Fine" can be specified as the PDA multi-chromatogram extraction mode in the advanced settings of the multi-chromatogram. "Fine" mode has improved the algorithm of extracting 2D chromatogram from 3D PDA data. For the method files newly created in this version, the mode is set as "Fine" by default. (The mode for existing method files created in the previous versions is "Normal".)

#### 6) Unit and factor can be defined for AD detector

Intensity unit name and the factor can be specified in the system configuration for analog input detectors (AD detector) of LC systems.

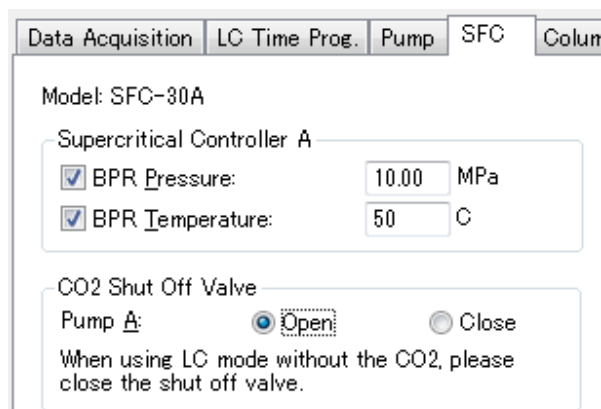
7) Quick batch icon in the Assistant bar

"Quick Batch" window can be opened from the Assistant bar. The "Quick Batch" button can be shown by customizing the Assistant bar, selecting the menu of "Tools" - "Customization" - "Customization Settings" then adding the "Quick Batch" icon into the Assistant Bar for each "Data Acquisition", "Method Editor", "Realtime Batch" and "Batch Editor" window.

8) Method setting to control (use/ do not use) Nexera UC CO<sub>2</sub> pumps

In the SFC (instrument parameter setting) tab, "CO<sub>2</sub> Shut Off Valve" parameter for CO<sub>2</sub> pump(LC-30ADSF) is available. When using the Nexera UC system as LC, selecting this parameter as "Close" can prevent the inflow of CO<sub>2</sub>.

\* To use this parameter, CBM-20A ROM version 3.20 or later is necessary as the system controller.



9) The report item whose [Display Type] in the [Format Settings] is set to "Significant Digits" may be output with an exponential form in the significant digits precision. To certainly output the significant digits with a form of integer or fixed point, "Significant Digits (Fixed)" setting is added in the [Display Type].

10) From this version, the information "instrument name" and "user name" are shown in the Start Data Acquisition dialog, which appears when "Show the data acquisition start dialog for manual injection" is checked in the [Start Acquisition] settings of the [Options] menu.

11) Add the "Reject Peak(No Correction)" command to the Manual Integration

"Peak removal (no correction)" command is not corrected baseline adjacent peaks when removing the vertical split peaks.

Previous Reject Peak is "Reject Peak(Auto Correct)".

Reject Peak of the standard toolbar has been changed to "Reject Peak(No Correction)."

12) Add the identification function of closest peak at relative retention time

When the identification parameters [Identification Method] is [Relative Rt], it will be able to identify the closest peak for the relative retention time when setting the peak selection to "Closest Peak(Relative)" or "Closest(Relative)+Similarity".

13) LabSolutions supports multi channel normalize report item for GC data.

- 14) When the pause of Batch Processing was requested by the user operation, the log is registered in the Log Browser.
- 15) When the audit trail function is used in the Calibration Curve, the reasons of the change can be set same reasons for all files.
- 16) In the ER/ES mode, the data files which are not saved, cannot be printed from this version.

### 3.14 Version 6.60 Feature Enhancements

#### 3.14.1 Improving the Multi Data Report

Following functions are added to the Multi Data Report without using Microsoft Excel.

- 1) "Significant Digits" is added to the Number Format of the Cell Format.
- 2) "Project Name" is added to Sample Information in the Item View.
- 3) In the height of the rows and width of the columns, input operation of the numerical value can be used.
- 4) The paper orientation for printing can be set on each sheet.

#### 3.14.2 Support for SPD-30AM

LabSolutions supports SPD-30AM. Please update ROM versions of CBM-20A/lite referring to the following table.

#	Item	CBM-20A/lite	Instrument version
1	Support for SPD-30AM	Ver. 3.30 or later	

#### 3.14.3 Support for Nexera-i MT

LabSolutions supports i-Series Method Transfer System (LC-2040C MT, LC-2040C 3D MT). This system is equipped with the method transfer function on the Analysis Window, which converts and imports gradient method files of existing systems onto this system. In addition, this system has the feature to adjust the pump gradient start timing, which enables analysis cancelling the differences of gradient delay volume between systems. (ACTO / Analytical Condition Transfer and Optimization function)

\* ACTO function is also available for all i-Series models of ROM version 2.10 or later.

#### 3.14.4 Improving S/N Calculation

The signal-to-noise ratio (S/N) defined in the European Pharmacopoeia 8.0 has been supported. The S/N calculation defined in each pharmacopoeia (EP/USP/JP) has been improved.

### 3.15 Version 6.70 Feature Enhancements

#### 3.15.1 Improving the processing speed

LabSolutions Database structure has been modified and the processing speed of Analysis and Postrun has improved.

### 3.15.2 Support for Spectrum Scan with RF-20A/RF-20AXS connected to i-Series

The Spectrum Scan function with RF-20A/RF-20AXS that are connected to i-Series is supported.

### 3.15.3 Improved Multi-Wavelength Mode

With the 2D (multi-wavelength) mode of SPD-M30A/ LC-2030 PDA/ LC-2040 PDA and with the SPD-30AM detector, Event Program is available. This enables the channel settings to be changed by specifying a time. Also, starting from this version, multi-wavelength chromatograms are output with the same mode as the PDA multi-chromatogram extraction mode "Fine".

### 3.15.4 Injection Volume Setting in Method

Injection volume for analysis can be specified in the method (autosampler instrument parameters) for the autosamplers below.

SIL-20A series (SIL-20A/20AC/20AXR/20ACXR) and i-Series (LC-2030, LC-2040)

This function is enabled by selecting the [Enable to specify Injection Volume in method] checkbox for autosampler settings in the system configuration.

## 3.16 Version 6.71 Feature Enhancements

### 3.16.1 Support for Windows 10

LabSolutions supports Microsoft Windows 10 Pro (64-bit version).

\* Agilent Technologies LC/GC systems do not work in Microsoft Windows 10 Pro.

### 3.16.2 Support for Electronic License Authentication System

LabSolutions supports Electronic License Authentication System.

### 3.16.3 Support for Multi Data Register Option

Multi Data Register option is the function to register data files, report files, and logs which are output from the Multi Data Register-compliant software, in LabSolutions Database.

These files and logs are possible to be managed in LabSolutions Data Management System.

In addition, these software can be connected to LabSolutions User Management System.

### 3.16.4 Support for AOC-5000/6000

LabSolutions supports Multifunctional Autosampler AOC-5000/6000 for GC.

### 3.16.5 Feature Enhancements for GC-2018

- 1) LabSolutions supports the TCD with a preamp (TCDm) detector for GC-2018.
- 2) LabSolutions supports the additional heater of GC-2018.
- 3) LabSolutions supports Aux-AFM of GC-2018 and Aux-APM of GC-2018.
- 4) LabSolutions supports prerun program of GC-2018.

### 3.16.6 Support for LabSolutions Balance

LabSolutions supports LabSolutions Balance.

### 3.16.7 Other Enhancements

- 1) The method for setting [Color] in [Chromatogram View Properties] for reference data was improved to specify the number as "Reference data #" instead of specifying a sequential chromatogram data number as "Chromatogram #."

## 3.17 Version 6.72 SP1 Feature Enhancements

### 3.17.1 Improved User Administration

- 1) The following [Account] policy settings have been added to the [Security Policy].

- Minimum Length of user ID

This sets the minimum length for user IDs. From 1 to 31 characters can be set.

- Prohibit passwords containing user ID

When this policy setting is enabled, character strings containing the user ID cannot be set as the password.

- 2) Reasons for the change can be entered when Rights groups are added, edited, or deleted.

### 3.17.2 Improved Signature

The following [Signature] policy setting is added to the [Security Policy].

- Prohibit level 1 acceptance by the operator responsible for registration, data acquisition, creation, or editing

When this policy setting is enabled, the same user as the operator responsible for registration, data acquisition, creation, or editing cannot sign the data file at level 1.

This setting cannot be enabled when the [Level 1 Accept only by the operator who acquired data] item is enabled.

### 3.17.3 Improved Project Administration

- 1) The Project Lock function has been added. When a project is locked, no files in the project can be edited or deleted, and files cannot be added.
- 2) The following [System] policy setting has been added to the [Security Policy].

- Input reason for the project administration changes

When this policy setting is enabled, the reason for the change must be entered when a project is added, deleted, or edited.

3) The following Rights have been added.

- Lock Project

Only users with this right can lock projects.

- Unlock Project

Only users with this right can release locked projects.

### 3.17.4 Improved File Administration

The following [System] policy setting has been added to the [Security Policy].

- Only use method, batch, and report format files from the database

When this policy setting is enabled, all method files, batch files, and report format files created or edited on the instruments will be saved in the LabSolutions Server Database.

\* Agilent Technologies LC/GC systems do not work when this policy setting is enabled.

- Prohibit changing of files whose result files have not been confirmed.

No change can be made for a data file containing any item that needs to be checked if the result file has not been checked.

### 3.17.5 Improved Backup and Restore

- 1) The backup speed has been improved.
- 2) The total number of backed-up data files is now recorded in the Backup Information.
- 3) Deleted projects can be restored.

### 3.17.6 Improved Data Manager

- 1) Files can be searched in multiple projects.
- 2) PDF Reader is added as the PDF browser.

PDF Reader is used to view all PDF files. The [Save as] item in PDF Reader is disabled.

When a report is printed from PDF Reader, the printed date and time can be added to the printed report.

### 3.17.7 Improved Log Browser

Mdb log files ("LSSLocalLog.mdb") can be imported using Log Browser.

### 3.17.8 Improved Report Set

Following operations for data files are included in a report set.

- Copy
- Move
- Import File

- Import Result File
- Create Multi Data Reports
- Release File
- Lock File
- Unlock File
- Restore as the Latest Version
- Confirm Result File
- Create Report Set
- Signature
- Update host upload flag
- Rename
- Change Sample information
- Change Data information
- Delete Result File
- Unlink

### 3.17.9 Improved Audit Trail Log

- 1) The following [System] policy setting has been added to the [Security Policy].
  - Enable entry of reasons for the selection administration changes.  
When this policy is enabled, a reason will be requested when saving changes in the [Selectin Administration] window.
  - Selection of the reason for the audit trail from available selection items  
When this policy is enabled, the reason for the administration tool audit trail can be selected from preset selection items.  
\* The selection items can be set in [Administration Tool] – [Selection Administration].
- 2) The following [LC, GC, MS] instrument policy setting has been added to the [Security Policy].
  - Selection of the reason for the audit trail from available selection items  
When this policy is enabled, the reason for the analysis and postrun audit trail can be selected from preset selection items.  
\* The selection items can be set in [Administration Tool] – [Selection Administration].
- 3) The following right has been added.
  - Editing selection  
Only users with this right can change the selection items.

### 3.17.10 Support for Nexera UC/s

LabSolutions supports Nexera UC/s system (SFC/UHPLC switching system).

### 3.17.11 Support for Method Scouting Solution

LabSolutions supports Method Scouting Solution.

### 3.17.12 Improved Batch Processing

- 1) Audit Trail Logs in batch file have been improved. The Audit Trail Logs include the addition and deletion of rows.
- 2) The execution status of a batch file (Unexecuted/Executed/Interrupted) is now displayed on each row of the batch file.
- 3) Following rights is added.
  - Change Execution Status of Batch Rows  
Only users with this right can change the execution status from "Executed" or "Interrupted" to "Unexecuted."
- 4) The following [LC,GC,MS] instrument policy setting has been added to the [Security Policy].
  - Enable entry of reasons for data acquisition  
When this policy is enabled, a reason will be requested for stopping or pausing batch processes.
  - Prohibit partial batch execution  
When this policy setting is enabled, partial execution is prohibited in batch analysis or batch postrun.
  - Prohibit editing or starting of rows in which batch processing is completed  
When this policy setting is enabled, batch rows with an execution status of "Executed" or "Interrupted" cannot be edited, run in realtime batch, or run in batch postrun. In order to change the execution status of a batch row, the [Change Execution Status of Batch Rows] right is required.

### 3.17.13 Other Enhancements

- 1) Only users with "rollback" rights can execute "rollback to Original Data."
- 2) The following [LC, GC, MS] Instruments policy settings have been added to the [Security Policy].
  - Prohibit saving data file as other name.  
When this policy setting is enabled, the [Save Data File As...] item cannot be executed.
  - Ask for password again when entering reason  
When this policy setting is enabled, the user's password is required to enter a reason.
  - Prohibit printing of unsaved files  
In electronic record / electronic signature (ER/ES) mode, the default values are set.
    - \* This replaces the function added in Version 6.50, which prohibits unsaved data files from being printed in electronic record / electronic signature (ER/ES) mode.

### **3.18 Version 6.80 Feature Enhancements**

#### **3.18.1 Support for GC-2030**

LabSolutions supports control of GC-2030.

#### **3.18.2 Support for the Instrument Control Panel Graphical User Interface (GC-2030, 2010, 2014, 2025, 2018)**

When the instrument to be controlled is GC-2030, GC-2010, GC-2014, GC-2025, or GC-2018, the instrument status and the instrument control can be displayed in graphical control panel format in the data acquisition window.

#### **3.18.3 Support for Quick Batch (GC)**

GC has been added to the instruments supports by LabSolutions for Quick Batch.

#### **3.18.4 New integration algorithm (i-PeakFinder)**

New integration algorithm is now available.

In this algorithm, it is possible to more properly integrate a complex shape chromatogram.

#### **3.18.5 PDA deconvolution algorithm (i-PDeA II)**

New peak separation algorithm (i-PDeA II) is now available.

Using the LC-PDA detector data, the target peak can be extracted from the unseparated peak, and the spectrum of the peak after separation can be identified and quantified.

#### **3.18.6 Addition of Constant Flowrate Calculation Program Function (GC-2010, GC-2014, GC-2025)**

A function has been added in which, when performing injection unit pressure control, the pressure program of the injection unit is adjusted so that the column flowrate is constant to suit the set column oven program. This function can be used to perform pressure control of the injection unit (SPL/PTV) for the GC-2010, GC-2014, and GC-2025.

### **3.19 Version 6.82 Feature Enhancements**

#### **3.19.1 Support for LC-2030 Plus / LC-2040 Plus series (LC)**

LabSolutions supports control of LC-2030 Plus and LC-2040 Plus series. These systems support the auto-pretreatment of the samples such as "Dilution", "Reagent" and "Co-Injection".

#### **3.19.2 Support for the SIL-30ACFV Flow Vial Autosampler (LC)**

LabSolutions supports the SIL-30ACFV. To control the SIL-30ACFV, please update the ROM

version of CBM-20A/lite referring to the following table.

#	Item	CBM-20A/lite	Instrument version
1	Support for SIL-30ACFV	Ver. 3.60 or later	

### 3.19.3 Support for Windows 10 by Agilent Technologies LC/GC systems

Agilent Technologies LC/GC systems support Microsoft Windows 10 Pro (64-bit version).

Note: However, Microsoft .NET Framework 3.5.1 is required.

### 3.19.4 Improved Column Management Function

A function to manage the column analysis history was added.

Columns can be registered and the analysis history can be displayed and printed from the Column Manager in the Management Tools.

- 1) The following policies were added to the [LC, GC, MS] instrument tab page of the security policy.
  - Enable audit trail function in Column Manager
  - Enable entry of reasons for audit trail in Column Manager
  - Prohibit data acquisition when columns are not set
- 2) The following rights are added.
  - Column installation to instrument

\* Agilent Technologies LC/GC systems do not support for Column Management Function.

### 3.19.5 Improved Log/Log Browser

- 1) The log can now be filtered by [area/content/reason] in the audit trail log.
- 2) Logs can be displayed in the order they were registered in the database.
- 3) Operation logs for the operations as below are recorded from this version.
  - Downloading method on the Analysis window.
  - AutoPurge (LC)

### 3.19.6 Added System Backup/Restore Function

A system backup/restore function that backs up and restores the entire system was added.

### 3.19.7 Improved Project Management Function

- 1) A project can now be deleted even when an instrument is used for a project other than the project to be deleted.
- 2) The following system policy settings have been added to the [Security Policy].
  - Prohibit deleting of method, batch and report formats files
  - Input reason for locking a file

- 3) The following policies were added to the [IR] instrument tab page of the security policy.
  - Request to reenter the password when a reason is entered
  - Select a reason for the audit trail from the selection items
  - Prohibit printing of unsaved files
  - Input reason when saving file
  - Output audit trail to application log
- 4) The following policies were added to the [UV] instrument tab page of the security policy.
  - Request to reenter the password when a reason is entered
  - Select a reason for the audit trail from the selection items
  - Prohibit printing of unsaved files
- 5) The following policies were added to the [RF] instrument tab page of the security policy.
  - Request to reenter the password when a reason is entered
  - Select a reason for the audit trail from the selection items
  - Prohibit printing of unsaved files

### 3.19.8 Improved User Administration

- 1) It is now possible to select a domain user that links to LabSolutions in the Windows domain link function.

Note: If the Windows domain link function is used, LabSolutions refers to the domain about the user ID and user name.
- 2) The following [Account] policy settings have been added.
  - Require authentication when logging in

Note: You can only make the selection when the [Login by Windows account] policy is selected. When this policy is selected, password authentication is required when unlocking the screen and signing.
- 3) The following rights were added.
  - Backup
  - Restoration
  - Browse entire log
  - Copy file
  - Move file
  - Delete file
  - Rename file
  - Get the file from Other Instrument
  - Register to database
  - Sign an old-version file
  - Create Report Set
  - Create Multi Data Report
  - Manual integration

### 3.19.9 Improved Report Set

The report set creation time was improved.

### 3.19.10 Improved LIMS Connecting Option

The LAIK (LabSolutions Application Interface Kit) makes it possible to connect to a host system such as LIMS without using text format file.

Note: Support on the host system side is required in order to connect.

### 3.19.11 Improved Data Manager / Data Explorer

- 1) Files can now be renamed in Data Manager.
- 2) Files can now be locked/unlocked and signed using Data Explorer.

### 3.19.12 Other Enhancements

- 1) The shared scope of template files can now be selected from [Instrument, Project, User, System].
- 2) It is now possible to filter the content displayed in [Audit Trail] items in the audit trail logs and report format files. The audit trail display can be filtered by specifying the history number or date.
- 3) Added [Signature] to display signature information on items in the report format file.

## 3.20 Version 6.83 Feature Enhancements

### 3.20.1 Support for Nexgen GC (CAGC-100)

LabSolutions supports control of Compact Analyzer Gas Chromatograph Nexgen GC (CAGC-100).

### 3.20.2 Support for GC-2010 Pro

LabSolutions supports control of GC -2010 Pro. GC-2010 Pro can be used in old versions also. However, the same problems are occurred as the defect of GC-2010 and GC-2010 Plus in old versions.

## 3.21 Version 6.86 SP2 Feature Enhancements

### 3.21.1 Support for Thermo Scientific LC/GC Systems

LabSolutions now supports the control of Thermo Scientific LC/GC systems.

\* The acquisition controller is only compatible with Windows 10.

### 3.21.2 Improved Agilent Technologies LC/GC systems control

- 1) Extension of analysis time, and snapshot are available now.
- 2) Methods can be printed from data acquisition window, and batch tables can be printed

from the batch analysis windows now.

- 3) Startup and shutdown are available now.
- 4) Run mode is available in batch processing now.

### 3.21.3 Improvement of Data Analysis

A "StdConc" macro indicating the set concentration has been added to the custom parameters.

### 3.21.4 Improved Multi Data Register

- 1) The function to write the data No. to a PDF file for signatures can now be enabled/disabled.
- 2) The system performs a retry if results file collection fails.

### 3.21.5 Support for FRC-40 / LH-40 (LC)

LabSolutions supports control of Preparative Purification LC System "Nexera Prep" Liquid Handler(LH-40)/Fraction Collector(FRC-40).

## 3.22 Version 6.86 SP3 Feature Enhancements

### 3.22.1 Support for Nexis SCD-2030 (GC)

LabSolutions supports control of Sulfur Chemiluminescence Detection System "Nexis SCD-2030".

## 3.23 Version 6.87 Feature Enhancements

### 3.23.1 Support for Nexera Series (LC)

LabSolutions supports control of new "Nexera" series (Nexera-X3 / XS / XR / lite). These Nexera series are controlled via system controller SCL-40/CBM-40/CBM-40lite from LabSolutions.

### 3.23.2 Support for mobile phase monitor and improved mobile phase volume management (LC)

- 1) Mobile phase monitor MPM-40 is supported which is connected to the system controller SCL-40/CBM-40/CBM-40lite.
- 2) Support for calculation of required mobile phase volume on starting batch analysis with SCL-40/CBM-40/CBM-40lite systems ("Confirm mobile phase volume used in analysis" setting in the menu of Analysis Window [Tools] - [Options] - [Start Acquisition] ).  
As the analysis progresses, the required amount of mobile phase is recalculated in real time and can be checked on the batch queue.

Systems with the Mobile Phase Monitor MPM-40 can display and notify you when there is a shortage of mobile phase compared to the current remaining volume.

### 3.23.3 Improved Startup function

- 1) Supported the LC autopurge in startup process. When "Perform LC Autopurge" is enabled in the startup setting, autopurge is performed according to the autopurge setting of the startup method file. The following LC systems are supported.
  - SCL-40/CBM-40/CBM-40lite
  - CBM-20A/CBM-20Alite
  - i-Series (LC-2030/LC-2030 Plus/LC-2040/LC-2040 Plus)
  - LC-2010/LC-2010HT
- 2) The LC system (i-Series and SCL-40/CBM-40/CBM-40lite systems) in the status of "Power Down" can be turned ON by executing batch analysis with startup action.

[Existing]

Power down → Register startup from the toolbar → (At the specified startup time) Power ON the system and execute the startup process

[Additional Support]

Power down → registering the batch analysis with startup action → (At the specified startup time) power ON the system and executing the startup process and batch analysis
- 3) For batch analysis with startup action, it is enabled to specify the first analysis method in the batch table as the startup method (Startup Settings "Use Start Row's Method File").

### 3.23.4 Improved Shutdown function

- 1) New shutdown options are enabled for instrument type LC (Shutdown settings "LC Pump Off", "Column Oven Off", "PDA Lamp Off").
- 2) New shutdown options are enabled for SCL-40/CBM-40/CBM-40lite systems (Shutdown settings "Autosampler Off", "LC Detector Off", "Power Off after shutdown").
- 3) It is enabled to allow the shutdown settings to be confirmed/changed when starting a batch analysis (Shutdown Settings "Confirm settings when starting batch").

### 3.23.5 Improved autopurge function (LC)

- 1) New option is supported to "Wait for Column Oven Temperature Stabilization" in warm-up process after autopurge on SCL-40/CBM-40/CBM-40lite systems.

If the solvent delivery system has the function of "Time to Reach the Flow " (which gradually raises the flow rate up to the specified flow rate), an automatic stable startup function [FlowPilot] is available.

[FlowPilot]

Raises the flow rate gradually up to the half value, wait for the column oven temperature

to stabilize then raises the flow rate gradually up to the specified flow rate.

- 2) When the system performs solvent blending in SCL-40/CBM-40/CBM-40lite systems, it is supported to purge with the mobile phase blending conditions (Initial Condition) after purging individual mobile phases.

### 3.23.6 Auto-Recovery function for pump pulsation (LC)

When the Auto-Diagnosis pump pulsation detection of the new Nexera series pump (LC-40, LC-40D XR / XS / X3, LC-40B XR / X3) is enabled, it supports the auto-recovery function (batch settings "Auto-Recovery") to perform the pulsation removal by executing the autopurge and to automatically reanalyze after removing the pulsation.

### 3.23.7 Enhancement of column management function (LC)

- 1) When using a column management device (CMD), analysis can be started only when the column information registered in the CMD matches the column information in the analysis method. To apply the column information registered in the CMD to the analysis method, click [Read CMD] on the column oven page of the instrument parameters.  
\* The CMD [Auto Load] check box on the page has been deleted.
- 2) The column management function "Column Manager" now supports the "Column Data Browser" function, which displays the injection time series data and can check the column degradation status. You can check the transition of the number of theoretical plates, tailing factor, resolution, and the pressure at injection.
- 3) The column management function "Column Manager" now displays the column information registered in the CMD and the connection status between the CMD and the instrument.

### 3.23.8 Vial Skip Function (LC)

Added the option to skip to the next line of analysis or abort as an error when the autosampler does not detect a vial in batch analysis (vial skip function).

This can be set in the properties (System Configuration) of each system controller.

### 3.23.9 Enhancement of parts management functions (LC)

A tool "LC-40 series part management tool" for checking part information and registering part replacement information of new Nexera series equipment is included in the instrument maintenance tool (Tool Launcher).

You can see a list of parts and their "Parts Serial Number", "Replacement Date", "Usage", "Guideline for Replacement", etc.

These part information is also reported out in the System Check report.

### 3.23.10 Support for the validation support software “A-IQOQ” version 2.0.0

Supported the validation support software “A-IQOQ” version 2.0.0.

### 3.23.11 Other Enhancements

#### 1) Improved the electronic activation

The machine codes you obtain on the Software License Management tool are now available for future activation.

\* After the deactivation process, you must obtain the machine code again.

## 3.24 Version 6.89 Feature Enhancements

### 3.24.1 Support for Preparative SFC system (LC)

LabSolutions supports control of Preparative SFC System (SFC-40P, LC-40P SF, FRC-40 SF, FRS-40).

### 3.24.2 Improved Creation of Report Set

The creation speed of Report Set containing Log report has improved.

### 3.24.3 Operation Log for LC-2010 (LC)

ROM version 3.4 of the LC-2010 series now supports disabling the pump and oven On/Off buttons during analysis.

In this version of LabSolutions, when using LC-2010 series with this feature enabled, LabSolutions logs the operation of the pump and oven On/Off buttons of the LabSolutions.

### 3.24.4 Other Enhancements

#### 1) Improving bulk exporting feature

The situation that the frequent confirmation messages for overwriting display when several data are exported at once from Data Manager is improved.

#### 2) Multiple Data Report Output in the Quant Browser

In the Quant Browser, a function to output data reports of multiple selected data at once has been added. ([File] > [Data Report for Current Data] menu)

#### 3) Batch Table Wizard for systems with FRC-40 (LC)

The Batch Table Wizard is now available for systems that include FRC-40 in the system configuration.

## 3.25 Version 6.92 Feature Enhancements

### 3.25.1 Support for Packed column of GC-2030 (GC)

LabSolutions supports control of TCD(PTCD-2030) for packed column and Injection unit

(SINJ-2030) for packed column.

### 3.25.2 Support for Gas Selector of GC-2030 (GC)

LabSolutions supports control of Gas Selector 2030.

### 3.25.3 Support for Nexera UC/s of SIL-40 series (LC)

LabSolutions supports Nexera UC/s system (SFC/UHPLC switching system) for SIL-40 series.

### 3.25.4 Other Enhancements

1) Improved LIMS option

XML format files can be exported.

2) Improved connecting Mobile Phase Monitor (LC)

When LabSolutions Analysis is opened after changing the settings of the mobile phase monitor (Mobile phase name, assignment information, etc.), LabSolutions system configuration is now automatically reflected. In the previous versions, the connection could not be made without auto-configuring the system configuration of the LabSolutions, but this improvement enables the connection without the operation.

## 3.26 Version 6.101 Feature Enhancements

### 3.26.1 Support for ELSD-LT III (LC)

LabSolutions supports control of evaporative light scattering detector "ELSD-LT III".

### 3.26.2 Support for CRB-40 (LC)

LabSolutions supports control of chemical reaction box "CRB-40".

### 3.26.3 Improved User Administration

The following rights are added. (GC)

- Edit Method (Carrier gas)

## 3.27 Version 6.103 Feature Enhancements

### 3.27.1 Support for LC-2050/LC-2060 (LC)

LabSolutions supports control of integrated HPLC LC-2050/LC-2060.

### 3.27.2 Improved Report Set

- 1) All versions of the data file can be included in the report set.
- 2) The log report in report set can be sorted by date.

- 3) The analysis ledgers in a report set can be sorted.

### 3.27.3 Improved User Administration

The following rights are added.

- Edit Sample Information (Sample Name, Sample ID)  
Only users with this right can edit the Sample Name and Sample ID after data acquisition.
- Extended Integration Time Program  
Only users with this right can edit the Extended Integration Time Program on the Integration Time Program sub-window.
- Browse related logs  
A user with "Browse related logs" rights can view logs for projects to which the user belongs.

### 3.27.4 Improved Multi Data Register

File collection now resumes automatically when the connection to the Shared Folder is restored.

### 3.27.5 Other Enhancements

- 1) Added USP 34th revised formula for calculating the column performance "Resolution".
- 2) Added a button to stop postrun when running a batch postrun.
- 3) The Quant Browser can then be launched from the Data Explorer in the Data Acquisition by selecting the batch specified.
- 4) On the Data Analysis window, you can set the default status of "Auto mode" ON/OFF for the Manual Integration Bar. Select the default setting in the Manual Integration setting window.
- 5) On the Quant Browser window, an option has been added to maintain individual check status of whether to use as "Cal. Point"(Calibration point) when "Peak Integration for All Data" is executed. Previously, all calibration points were set to ON when recalculating, but this option allows you to maintain the individual ON/OFF settings. This can be set in [Tools] - [Options] - [Calibration Point]tab of the Quant Browser.
- 6) When a project cannot be deleted, the reason is displayed in detail.
- 7) Improved the electronic activation and deactivation
  - Changed location of the software license management tool shortcut.  
(Old) [Start menu (All App) | LabSolutions | Software License Management Tool]  
(New) [Start Menu (All App) | Shimadzu License Management Tools | Software License Management Tools]
  - Changed installation folder for Software License Management tool.  
[64bit OS]  
(Old) C:\Program Files (x86)\LabSolutions

(NEW) C:\Program Files (x86)\Shimadzu\License Management Tools  
[32bit OS]

(Old) C:\Program Files\LabSolutions

(NEW) C:\Program Files\Shimadzu\License Management Tools

- You can select and deactivate any license.

This feature changes the deactivation procedure.

For more information, see Software License Authentication Instructions included in the product, or help on the software license management tool.

### 3.28 Version 6.106 Feature Enhancements

#### 3.28.1 Support for AOC-30 of GC-2030 (GC)

Supports control of the new auto injector AOC-30i (single tower / sampler system / dual tower / dual sampler system) for GC-2030.

#### 3.28.2 Added "Vial Skip" Function (GC)

Added the function to skip the analysis and proceed to the next analysis even if the sample is misplaced when performing "Realtime Batch" on AOC-20i, AOC-20s, AOC-30i and AOC-20sU.

#### 3.28.3 Added "zero after Start" Function (GC)

For all GC detectors installed in GC-2030, added the function to correct the baseline to "0" at the start of analysis (Start).

#### 3.28.4 Control Panel Enhancements (GC)

A function to display the number of times consumables (septum, insert and syringe) have been used with an indicator and a function to display column information have been added to the control panel.

#### 3.28.5 Other Enhancements (GC)

- 1) The UI has been changed so that only the result of the SCD leak check is displayed and the pass / fail judgment icon is not displayed.
- 2) The default value of ECD current has been changed from 2nA to 1nA.

### 3.29 Version 6.110 Feature Enhancements

#### 3.29.1 Supports the control function of OCI-2030NX of GC-2030 (GC)

Supports the control of the Injection Unit "OCI-2030NX" for GC-2030.

#### 3.29.2 Added "CleanPilot" function (GC)

In GC-2030, Added a function to set up or run a clean up at your preferred timing, or set up an automatic clean up prior to starting batch analysis.

#### 3.29.3 Added HS-20 interrupt analysis function (GC)

A parameter that implements / does not execute overlap has been added to the HS-20, and a function has been added that enables interrupt analysis when there is not overlap.

#### 3.29.4 Other Enhancements

1) Added the function of saturation chromatogram view setting

On the screen that displays saturated chromatograms, a function has been added so that the color settings can be disabled and the thickness of saturated chromatogram lines can be changed. When it is disabled, the chromatograms in the saturated region are drawn with the color settings for each chromatogram.

2) Improved Multi Data Register

Now "Upload" value can be set on Map Editor.

3) Improvements regarding "Trap Equilib. Temp" for HS-20 (GC)

The UI has been changed so that only the result of the SCD leak check is displayed and the pass / fail judgment icon is not displayed.

4) Improvements to the method's program display line (GC)

Changed the program display line of the method when a device before GC-2030 is connected from 1 line to 3 lines. (Chinese OS only)

## 4. LabSolutions DB LC/GC Corrected Defects List

### 4.1 Version 6.01 Corrected Defects List

#	Category	No.	Description	Remarks
1	Audit Trail	10015	When changing the number of lines of the Integration time program and then saving the file with enabling the Audit Trail, application error occasionally occurred.	
2	Data Analysis Window	10026	The [Default X Axis of Calib. Curve] selected on the [Data Processing Settings] sub-window in the system settings was not applied to the default value of the [X Axis of Calib. Curve] in the Quantitative parameters.	
3	LC Analysis	10035	When the ROM version of ELSD-LTII was Ver. 1.7, it was not possible to connect with the instrument.	

### 4.2 Version 6.01 SP1 Corrected Defects List

#	Category	No.	Description	Remarks
1	Data Analysis Report	10084	Temporary folder path on Windows appeared to name of data file in [Postrun Report].	
2	Data Analysis Report	10092	With the Security Policy setting [Output report type in header] checked, the title 'Report(Report Editor)' was output instead of 'Report(PostRun Batch)' in Postrun Batch.	
3	Quant Browser	10110	The data file of unknown sample (sample type) was not saved when the method was saved in Quant Browser.	

### 4.3 Version 6.1 Corrected Defects List

#	Category	No.	Description	Remarks
1	System Check	10001	When executing System Check on the OS locale settings where decimal point was set to comma(such as German) in Region and Language options, the decimal fraction of adjustment parameters and validation results was output as 0.	
2	Audit Trail	10018	The Audit Trail items about [Settings of Mobile Phase] for Pump C and D were not displayed properly.	This defect occurs only in English version
3	Report	10025	In the Chromatogram and Summary report item, when Time Range was Manual and Separate Display was 2 or larger, the time axis was displayed without separated.	
4	Summary Report	10027	In the LC summary report, the Y-axis unit of chromatogram was displayed as 1,000 times as usual on the detector configuration which didn't include 2D detector and included only PDA detector.	
5	Instrument Monitor Bar	10028	When the state of degassing unit connected to subcontroller was changed in the time program, the current value was not properly displayed in the Instrument Monitor bar.	

#	Category	No.	Description	Remarks
6	Batch Postrun	10041	If multiple postrun batch analyses were run simultaneously, the following error occasionally occurred: [CAB?????.cab is not found.].	
7	Calibration Curve	10042	In the manual integration of Calibration Curve window, when executing [move BL] to PDA data where Display of Ch1 in the Multi Chromatogram settings was unchecked, there was a case an error message was displayed and peak integration could not be executed.	
8	Sample information report	10044	[CMD Inj Counts] could not be displayed.	
9	Data Browser	10057	When executing peak integration in Data Browser, the result of the Column Performance(tailing factor, resolution and so on) became 0.	
10	System Check	10058	The system check results could not be printed. The problem was corrected.	
11	PDA data analysis	10060	When analyzing PDA data where Display of Ch1 in the Multi Chromatogram settings was unchecked, an application error occasionally occurred after clicking [Program] button(starting integration time program) in Compound Table Wizard.	
12	Macro Settings	10061	On the Macro settings of the method report item, when setting display item of [PDA Data Processing Parameters] ([peak integration], [identification], [quantitative], [compound table] and [column performance]) by inserting Macro Variable, the inserted macro text strings were not correct.	
13	Data Analysis	10066	When the end point of the tailing main peak was moved to the specified time by the Move BL command in Manual Integration, there was a case the height of the end point was also moved to the specified time and became different from that of the chromatogram.	
14	GC Analysis	10070	In the system configuration of GC-2014, the setting of a gas type in the Additional Flow was not downloaded to the instrument.	
15	LC Analysis	10071	When starting to plot the data of PDA detector soon after setting the Criteria Value of the QA/QC parameter in Data Acquisition window, an application error occurred.	
16	Batch Edit	10074	When the F10 key was pressed while inputting Japanese words into a cell of a Batch Table, it occasionally became impossible to input words.	
17	Peak Purity report	10077	When using [Overlay Chromatograms], if the chromatogram intensity was low, it occasionally occurred that the top of peak was not displayed in the graph display range.	
18	File conversion	10078	When converting CLASS-VP method or data files to LabSolutions format, the comments were not converted.	
19	Chromatogram report	10082	The line types and line widths of [graph – Rack Plate L Temp/M Temp/R Temp] could not be set.	
20	LC Analysis	10083	When a fraction collector was collecting, there was a case the hatching of fraction collection range was not displayed properly in the Data Acquisition Window.	This defect does not occur in the Postrun Analysis View.

#	Category	No.	Description	Remarks
21	Administration Tools	10085	If the [PC Information] in the [Administration Tools] – [Validation] was selected on Windows 7, the [Security Patch Information] was not displayed.	
22	System configuration	10088	In the system configuration of RID-10A, the System Check threshold View could not be opened.	
23	Quantitative Result Report /Grouping Result Report	10093	In the Quantitative result and Group Results report item, when selecting data to [PDA] and unchecking Fix Detector Number, the results were not reported.	
24	General	10094	If the Agent authentication database was restored while it was being connected to, there was a case that the service could not be started after the restoration.	
25	Batch Edit	10104	If a vial number was set in XY format such as 'A1' in the Batch Editor window and [Fill Series] was selected, the numbers were set in series. The vial number has been set in XY format in series from this version.	
26	Data Comparison	10115	When performing Zoom Up/Down, Zoom Left/Right or Move Up/Down in Data Comparison window, the scale size of Full Chromatogram was changed.	
27	System Configuration	10133	In the system configuration of the GC, if a new entry was made to the column list, the two types of column registered initially disappeared. The problem was corrected.	
28	System Configuration	10136	When restarting System Configuration and selecting the same column list, the message containing Audit Trail with [ID of Column DB] changed was displayed.	
29	Graph of Time Program	10141	When executing [Initialize Zoom] to the graph of the time program soon after creating new method file, the graph was not displayed correctly.	
30	Data Acquisition	10142	When the slope test was executed to detector A, it was executed to detector B if the graph view was set to [Stack] in Display Settings and detector A had multiple wavelength channels.	
31	Chromatogram report	10145	If the curve name of chromatogram was set to draw outside a graph, there was a case that a lead line of the graph was not drawn properly.	
32	Summary Report	10147	Lambda max was not reported correctly on summary data of Summary (Compound) Report Item.	
33	Quant Browser	10154	On [Quantitative Results View] in Quant Browser, when Sample Name was changed soon after toggling display/hide of the statistic calculation results, it was applied to different line.	
34	General	10164	Data files with a name including an apostrophe (') were not saved properly. The problem was corrected.	
35	Report item overall	10165	When a report with vertical texts was output in PDF, it was not displayed correctly in some cases. The problem was corrected.	
36	Method Report	10168	Cell Temperature of RF detector was not reported.	This defect occurs only in English version

#	Category	No.	Description	Remarks
37	Report	10169	When reports were generated in single or batch analysis, formats set by [Display Format] of [Data Proc. Settings] of [System Settings] of [Administration] was not applied properly and output by the default values of the system.	When reports were generated in Postrun, settings of [Display Format] are applied properly. And there are no problems in the case of items formatted by [Individual Setting] in Report Items.
38	Installer	10170	It was not possible to run LabSolutions on the computer where WindowsScriptingHost was not installed.	
39	Calibration Curve	10173	When method files were set to read only, it was not possible to run analysis with those method files even when the sample type was [Unknown] and the method files were not to be changed.	
40	Batch	10177	When Sample Type was set to [Unspiked] or [spiked] except at the first line of Batch, the value of [Unspiked] was not reported correctly.	
41	PDA data analysis	10180	With the Chromatogram View Display Setting set to Single, when closing PDA Data Analysis window and then opening the PDA data in PDA Data Analysis window again, an application error occasionally occurred.	
42	Data Acquisition	10181	When entering the value of carrier gas at [Injection Unit] tab in the Instrument Parameter, the gas flow was not calculated if another tab was focused directly.	
43	Batch Postrun Report	10185	The Report Number in the report of [Batch Postrun] appeared as [1].	
44	LC Analysis	10186	In the pretreatment of SIL-10A series and SIL-10ADvp, a part of the [Reagent] parameter was not downloaded properly.	
45	LC Analysis	10187	After CBM-20A/20Alite was restarted without setting any pumps in the system configuration, there was the case that data acquisition was not started when single run or batch analysis was performed.	
46	Start-up	10189	When starting analysis program, connection failure occasionally occurred after beep sound from the instrument.	
47	Report	10191	In Calibration Information of Data Processing Parameters of Method report item, the formula of the detector connected to line 2 was not displayed correctly.	
48	Autopurge	10197	After executing AutoPurge with more than two solutions and with the setting of [Purge Time] for Autosampler set to 0.1 minutes, the AutoPurge window was not displayed on the next AutoPurge and Analysis program could not be stopped.	
49	Peak Integration	10198	When calculating peak valley ratio, division was performed by the value around 0.0 on particular data then the data could not be saved to database for the calculation result became infinity.	
50	Batch	10199	Batch Add-in settings in the batch table were not saved in the data file on Analysis.	

#	Category	No.	Description	Remarks
51	Vial Number	10200	When setting vial number with XY format and executing batch analysis enabling Acquisition Cycle Time Optimization, an error message "Vial number is not correct." was displayed.	
52	QR Code	10203	It was not possible to output QR code in the report format file created by LCsolution.	
53	Batch	10204	In batch analysis with the configuration of GC dual-line, the first and last line were not acquired when executing batch analysis only to line 2.	

#### 4.4 Version 6.11 Corrected Defects List

#	Category	No.	Description	Remarks
1	Report	10009	When editing a method items on the configuration with RF-20A (2 Wavelength Mode) and printing a report, unnecessary strings "RF" were output in Display Items.	
2	Report	10010	When editing a method items on the configuration with RF-20A (2 Wavelength Mode) and printing a report, the contents of [RF Analog Output] and [RF Analog Output2] were displayed in incorrect character format.	This defect occurs only in Japanese version
3	Report	10011	When editing a method items on the configuration with RF-20A (2 Wavelength Mode) and printing a report in English, the items of [Sensitivity], [RF Analog Output], [RF Analog Output2] were not displayed correctly.	This defect occurs only in Japanese version
4	LC Analysis	10012	Even if the autosampler is set to LocalMode, the tool buttons of autopurge, system check and start single run were enabled.	
5	Report	10148	When creating Batch Table items and outputting a report, the items of "Created by" and "Modified by" displayed in the file property couldn't be reported.	
6	Data Analysis window	10201	In [Results View] in the Data Analysis window, the font set in the Compound Result Table did not reflect the one set in [Table Style].	
7	Data Analysis window	10202	When performing [Tools]-[Show Check Result] after saving a data file in Data Analysis, the result was displayed as NG.	This defect doesn't occur when saving a PDA data file.
8	Log Browser	10207	When using the log browser function, the filter specified by time was not available.	
9	LC Analysis	10220	The [Summary (Data)] report item supports to report the settings of [LC Time Prog.] in [Instrument Parameter View].	
10	Summary report	10221	In the [PC Information] window, [Printer Information (Driver Information)] was not displayed properly.	
11	Administration Tools	10224	The time spent on backing up data files became shortened.	
12	Report	10226	When repeatedly zooming a chromatogram, the same values of X axis scales plotted redundantly.	
13	System Configuration	10227	When creating a new [System Configuration] report item and then loading the data acquired by RF-20A/ AXS, the [Xe Lamp Change Interval] item was displayed twice in the [Detector A] item.	This defect occurs only when reporting data acquired by RF-20A/ AXS.
14	Instrument method	10228	In the [Network Instrument] window in [Communication Settings], the [Login Status] item was not displayed.	
15	Data analysis	10229	When 1 Wavelength mode was selected for RF-20A/AXS, '0' could be set as the excitation wavelength.	

#	Category	No.	Description	Remarks
16	Data Comparison	10230	When updating a PDA contour graph during PDA data acquisition, the [Data Acquisition] window was unintentionally closed.	
17	Report	10231	On the configuration with multiple detectors, even when the [Other Detectors] checkbox in [Display Settings] in [Chromatogram View] was selected, chromatograms of other detectors were not plotted.	This defect occurs when operating data acquired without selecting the checkbox of [Detector A] in [Data Acquisition].
18	Data Comparison	10236	Even when loading PDA data in the [Data Comparison] window after selecting the [Reference Correction] checkbox, a chromatogram without reference correction was plotted.	In the peak table, the result after reference correction is displayed.
19	Report	10239	Default values in the [Settings] tab of batch table items were corrected.	
20	Report	10243	In [Summary (Compound)] Report Item, integration (%RSD, standard deviation) of [Number of Theoretical Plate/meter] was not correctly calculated.	
21	Quant Browser	10248	When the method file was updated in Quant Browser, time and date of data files used in [Calibration Curve] were not updated.	
22	Audit Trail	10254	In the log of [Audit Trail], the path such as temporary folder path of Windows System was displayed.	
23	Batch Analysis	10257	Because batch analysis was stopped where prohibitive characters ("!", "¥") was registered as a data file name, registration of the name are checked before performing batch analysis.	
24	LC Analysis	10261	When performing Auto-Purge of autosampler, [LC Control] buttons as follows could not be clicked. - Instrument On/Off - Drain fraction collector - Scan spectrum	
25	Batch Analysis	10262	When performing batch analysis in [System Configuration] of TurboMatrixHS and GC, and setting [Start Line] and [End Line] in [Settings] of realtime batch, correct vial numbers were not sent to TurboMatrixHS.	
26	Batch Postrun	10263	When performing batch postrun, [Sampling Count from the Vial] of [Sample Information] was reset to '0'.	
27	Data Analysis window	10277	When decimal points are set to comma in Region and Language such as German format, and numerical value was set to [Index] of comment 7 and 8 in [Prefilter] of [Library], search was not correctly performed.	
28	Data Acquisition	10281	When overwriting a method file soon after the line of [LC Time Prog.] was cut or cleared, the file was not saved.	
29	Report	10299	When Report Format Files were saved, file creating time and file updating time were registered on the database as UTC(universal time coordinated).	This defect occurs in version 6.1.

#	Category	No.	Description	Remarks
30	Batch	10302	<p>When saving a batch file in text format, some items could not be saved or loaded.</p> <p>The following are the items which could not be saved.</p> <ul style="list-style-type: none"> <li>-Conc. Overrides</li> <li>-System Suitability</li> <li>-Sampler File</li> <li>-Barcode</li> <li>-Multi Injection</li> </ul> <p>The following are the items which could not be loaded.</p> <ul style="list-style-type: none"> <li>-Action</li> <li>-ISTD Amt.</li> <li>-Data Comment including tab characters</li> </ul>	
31	Batch Table Wizard	10311	In the [Batch Table Wizard] using a method file in which Rack 14 of SIL-10ADvp was set as Sample Rack, the tray could not be set even after making a rack definition file.	
32	Report	10315	When a pump was in the LPGE mode, "LPGE Mode: Auto" was displayed in each pump item in the LC instrument parameters of method report items even when the other pumps did not have LPGE Mode parameters.	
33	Calibration Curve	10333	When method parameters of the data file acquired by dual-line configuration GC were loaded to the method file of dual-line configuration GC by "Load Data Method Parameters" in Calibration Curve Window, method parameters of Line 2 of the data file was loaded to Line 1 of the method file.	This defect occurs when data was acquired by dual-line configuration GC.
34	Calibration Curve	10334	When the data file acquired by Line 2 of dual-line configuration GC was saved by "Save Method As..." in Data Analysis Window, the saved method file couldn't be opened in Calibration Curve Window.	This defect occurs when data was acquired by dual-line configuration GC.

#### 4.5 Version 6.11 SP1 Corrected Defects List

#	Category	No.	Description	Remarks
1	Report	10275	There was a case that GC Data / Method File is not displayed in Method report item.	
2	Report	10316	The report format file is overwrite saved, there was a case that the [Registered by] in Data manager is not renewed.	
3	PDA Utility	10318	If logging on the windows with standard user, there was a case that PDA utility does not work.	
4	Log Browser	10319	When the [Log Type] is changed before Log Browser displays all logs, there was a case that the logs of different log type are displayed.	
5	Batch	10331	Temporary directory is displayed for the data file name in the data file property, if Only [Process - Data Acquisition] is checked for Run Mode in batch table.	
6	LIMS connecting Option	10338	If [The value at the previous state of numerical format/rounding is used] is valid In LIMS connecting option, the [Data Processing Settings] in LabSolutions is applied for other software (LCsolution, etc.)	

#	Category	No.	Description	Remarks
7	Administration Tools	10341	In Data Manager, if multi data report is consecutively created from same template, [Date Acquired] in the report is the same with [Date Created] of the template.	
8	Report	10346	If [Y Display Area] is changed in Contour Graph report item, application error occurs.	
9	LC Analysis	10350	Without sample with SIL-30ACMP is run in [Realtime Analysis], there was a case that error is displayed.	
10	LC Analysis	10374	The default value of "Slit Width" in the SPD-M30A instrument parameters has been changed into 8 nm from 1 nm.	
11	Data Explorer	10383	When the check box [Restrict operation of Data files] was checked on the [Security Policy Settings], Data Files were deleted by pressing the delete key on the Data Explorer.	
12	Data Management	10392	When the check box [Require comment when signing] was checked on the [Signature tab] of [Security Policy Settings], it was possible to push the [OK] button without the input of a comment in the [Confirm] dialog of signature.	
13	Data Analysis	10391	There was a case that the "Peak Valley Height" became a larger value than the right value with peak shape, and the "Peak Valley Ratio" became a smaller value.	

#### 4.6 Version 6.11 SP2 Corrected Defects List

#	Category	No.	Description	Remarks
1	Quant Browser	10195	When the display font setting of [Results View] in the [Quant Browser] was changed, the font setting was not saved.	This defect was fixed in 6.11SP1.
2	Report	10287	The Help for [PDA Data Processing Parameters] in method report item was not displayed correctly.	This defect was fixed in 6.11SP1.
3	Data Analysis	10322	When data acquisition was run using the method file containing the Manual Integration table, the data file containing the Manual Integration command was created. It was corrected so that the Manual Integration table might not be stored into a method file. Even if data acquisition was run using the method file containing the Manual Integration table, it was corrected so that the Manual Integration command might not be stored into a data file.	
4	LIMS Connecting Option	10342	In LIMS Connecting Option, with using the software which has a number of result tables, it was unable to set Transmission Settings to each result tables.	This defect was fixed in 6.11SP1.
5	MultiData Report	10343	In MultiData Report, with using the software which has a number of result tables, it was unable to create MultiData Report file with using a number of result tables.	This defect was fixed in 6.11SP1.
6	Batch	10376	When the full pathname of the exported file which converted to ASCII text format was long, there was a case that the user program was not run by batch processing.	
7	SIMDIS GC Analysis	10386	Reid vapor pressure calculation has been corrected.	This defect occurs only on SIMDIS GC option.
8	SIMDIS GC Analysis	10387	NOACK calculation has been corrected.	This defect occurs only on SIMDIS GC option.
9	GC Analysis	10389	When using HS-20, the temperature of injection port can be set.	

#	Category	No.	Description	Remarks						
10	GC Analysis	10395	When using HS-20, there are unnecessary or mistaken named parameters in the system configuration and instrument parameter view.							
11	GC Analysis	10399	On the OS locale settings where decimal point was set to comma (such as German) in Region and Language options, the instrument parameter of TurboMatrixHS was not downloaded properly.							
12	Report	10400	When the solvent delivery mode was except Low Pressure Gradient, the unnecessary compression ratio was displayed in the instrument parameter report of LC-30AD.							
13	GC Analysis	10404	After the carrier gas type was changed, there was a case that the previous gas type was used for carrier gas flow calculation.							
14	LC Analysis	10406	In the instrument environment of SIL-30AC, when pressed the pretreatment button in [Instrument Parameter View] of the [Autosampler] tab page, an application error occurred.							
15	GC Analysis	10409	When running batch analysis, [Realtime Analysis] program was occasionally closed.	Though the hang up occurred, data acquisition completes correctly.						
16	GC Analysis	10412	When executing System Check with the setting of the name of column in [system configuration] to more than 32 characters, an application error occurred.	GC Only						
17	LC Analysis	10416	When executed long acquisition with fast sampling, [Realtime Analysis] program hung up. It occurs when (Data Acquisition/Sampling Period) surpassed 1024 x 1024.  Ex) <table border="1" data-bbox="587 1167 1040 1256"> <thead> <tr> <th>Sampling Period</th> <th>Acquisition time</th> </tr> </thead> <tbody> <tr> <td>100msec</td> <td>1747.62 min</td> </tr> <tr> <td>20msec</td> <td>349.52 min</td> </tr> </tbody> </table>	Sampling Period	Acquisition time	100msec	1747.62 min	20msec	349.52 min	
Sampling Period	Acquisition time									
100msec	1747.62 min									
20msec	349.52 min									
18	LC Analysis	10428	When set the [Wait Time] of oven, the change of the value was not downloaded to the instrument. The instrument operated as using the downloaded Wait Time [0].	This defect occurs in 6.11 and later.						
19	Report	10430	In the method report item, it occurred when an Injection Unit was DINJ, the R column information in the [GC Instrument Parameters] was displayed as the information in the [Column Oven Information].	This defect occurs in 6.11 and later.						
20	General	10431	When the Realtime monitor of the Anti-virus software operated in the PC, batch processing occasionally stopped.							
21	PDA data Analysis	10432	When specified Background compensation in PDA Data Analysis or batch processing to PDA data, handle leak occurred. Operating LabSolutions for long time without restarting had possibility to occur Insufficient memory error and caused system instability.	This defect occurs in 6.11SP1 and later.						

#	Category	No.	Description	Remarks
22	Report	10433	On the Calibration Curve of SIMDIS GC Report Item, Data file names were not reported correctly. It occurred in the case as described below.  - When set the cell of "Conc." of the #1 on the compound table to "Not Used" or set the "Area" checkbox of the #1 on "Calibration Table" to invalidation. - When set the Quantitative Method of the Quantitative tab to "Area Normalization".	This defect occurs in 6.11SP1 and later.
23	Report	10434	In data processing parameters of Method report item, the file name of Calibration Curve Information was not displayed correctly.	
24	Installer	10437	There was a case of uninstaller stopped and unable to uninstall LabSolutions. It occurred when the software other than the uninstaller was running.	

#### 4.7 Version 6.20 SP2 Corrected Defects List

#	Category	No.	Description	Remarks
1	Report	10193	In the [Properties] sub-window of the report item of [PDA Data Processing Parameters], some characters did not fit in the list box for some items.	
2	Administration Tools	10205	When a user has logged on the system with authority other than the Windows administrator, PC information was not displayed by selecting [Administration Tools] - [Validation] - [PC Information].	
3	Administration Tools	10255	In the [Log Browser], some logs output at the same time were registered and displayed in random order. The order of logs already registered is not changed.	
4	Administration Tools	10301	It was not possible to select the [Delete original after backup] checkbox in the [Backup - Condition Settings] sub-window.	This defect occurred in 6.11 and later.
5	Batch	10332	When a batch analysis where bracket quantitation was set was stopped, the data file was not registered into the database.	
6	Data Analysis	10380	Custom parameter result set in the last line of a batch was not calculated by SST.	
7	System Check	10381	After the initial system check was cancelled during the process, system check could not be executed the second time or after.	
8	Batch	10388	The file name edit box sometimes became blank when a tray setting was performed using the batch table wizard.	
9	Report	10396	The peak top comment was not printed when the PDA chromatogram image printing of the data browser is used.	
10	Data Analysis	10407	In Data Analysis, when "Display not identified peaks as peaks with zero area(height)" was checked in the Identification parameters, there was a case that the noise value displayed from the popup menu of a chromatogram view was not correct.	The noise value displayed on the peak table is satisfactory.
11	Report	10418	When the colors of GC Status curve (Setting) on Chromatogram item are changed, those colors are not applied to report actually.	
12	Data Analysis	10439	Some description of Help for manual peak integration was incorrect.	

#	Category	No.	Description	Remarks
13	Report	10440	Even when the intensity axis range was set by editing the printing format of the graph image in the [Data Comparison] window, the setting was not applied in some cases.	
14	LC Analysis	10442	With the [Fraction Collector] tab of the Instrument Parameter View of LC, there was a case that the intensity unit of a chromatogram was displayed in units other than [uV]. It corrected so that the intensity unit might certainly be displayed by [uV].	
15	Report	10445	Some settings of the [# of Items in a Row] in the Method report item and the System Configuration report item were not saved in Report Format.	
16	Report	10456	When executing [Tools]-[Customization]-[Toolbar Customization Settings] from [Report] window, there was a case that the program got hung-up.	It occurred when using the licenses of GC or LC without PDA.
17	PDA Data Analysis	10457	When opening the data file as reference data file, there was a case that the channel to display could not be selected because the channel selection window was not displayed.	It occurred in acquired data file with instrument configuration including PDA detector and other detector(s), and method of which data acquisition was set to [Off] except for PDA detector.
18	Administration Tools	10462	[Database Server] was not printed out by selecting [Administration Tools] - [Validation] - [Print System Information] - [System Connection Information].	
19	Batch	10466	When the System Suitability testing(SST) is performed in the instrument number from 10 to 15, the result could not be shown and printed.	
20	Report	10469	When setting [Y-axis Display Area] in the Contour Graph report item, regardless of the value of [Y-axis Minimum Wavelength], the acquired data was always drawn from the Start Wavelength. This defect also occurred in the 3D Graph report item.	This defect occurs in 6.11SP1 and later.
21	Report	10470	The carrier gas pressure value of GC instrument parameters in the Method report item, regardless of the set unit in system configuration, the value always printed in kPa unit.	
22	General	10473	When Windows was shut down with a user logged into LabSolutions, the respective license was not released and the number of usable licenses decreased.	
23	Browser	10474	The copy and paste operation in the Sample Type column could not be performed in Quantitation Browser.	
24	Administration Tools	10475	When sample information over 100 lines was selected in DataManager, result tables for 101st line and after were not displayed correctly.	
25	GC Analysis, Offline Editor, Postrun	10478	The function creating files from templates did not work correctly.	
26	Browser	10480	The auxiliary line might not be correctly drawn in the Calibration Curve when the grouping quantitation was performed in the following conditions. Quantitative Method : Internal Standard "Use level 1 conc. in the compound table" is checked in the data file properties.	

#	Category	No.	Description	Remarks
27	LC Analysis	10481	When the checkbox for a detector in the Instrument parameter view was set to [Off], there was a case that data acquisition ran until the end time of the detector.	This defect occurred in 6.11 and later
28	LC/GC Analysis	10487	When printing failed, the application log for it was not recorded.	
29	GC Batch	10488	When the batch file from GCsolution (all items of System Check are unchecked) is used in LabSolutions, the System Check is started.	
30	Baseline Check	10490	When baseline check was executed from the [Instrument Control] toolbar in the [Data Analysis] window, the baseline check results were not registered into the database.	
31	LC Analysis	10491	When a method file created with a different detector base rate was opened and the sampling rate in the instrument parameter was no longer an integer multiple of the new base rate, there were cases where the retention time and intensity of chromatograms were not created correctly.	This defect occurred in 6.11 and later. The problem does not occur if the sampling rate is corrected in the instrument parameter view.
32	LC/GC Analysis	10503	Temporary folder path of LabSolutions was changed for PC with the installation of Anti-virus software.	
33	Batch	10510	When a batch table file (GCsolution text format) was loaded, some option items were not displayed. To display such items, depends on the file new setting of the batch file, a template is used.	
34	Batch	10524	When "Wait for an executed program to close" was selected at User program Action, a batch processing stopped very occasionally.	
35	Agilent-LC Analysis	10528	When Agilent-LC Analysis had multi detectors, there was a case that the data file was not acquired correctly.	
36	LIMS Connecting Option	10538	When LIMS Connecting Option failed to send a data file to a LIMS system, an application log of "Successfully completed the file output from the LIMS Transfer." was recorded.	
37	Report	10544	In the method report item, [Integration Time Program (Data)] was not output.	This defect occurred in 6.11SP2 and later.
38	LC Analysis	10560	In a system where LC-10AT/10Ai V3.1 worked in Low pressure gradient mode, the message "(0342) Value is not correct." was displayed on the Pump tab page of [Instrument Parameters View]. And the analysis program became inoperable.	This defect occurred in 6.11 and later.
39	Administration Tools	10568	The [Displayed for confirmation when files synchronize with the latest version in database] was not checked by default in the [Security Policy Settings].	
40	PDA Data Analysis	10570	In some cases, "Purity Index", "Threshold" and "Impurity" were not correctly calculated in the Peak Purity Analysis.	This defect occurs only when the noise spectrum calculated by the Ver. 6.11SP1 - 6.11SP2 is used.
41	Administration Tools	10571	A system that had backed up multiple projects together, LabSolutions upgrade went wrong occasionally.	

#	Category	No.	Description	Remarks
42	LC Analysis	10574	Response speed of the [FRC Drain/Collect] tool button has been improved in FRC-10A system.	
43	Data Analysis	10585	Using Manual Integration commands (Force V Peaks, Force B Peaks) for particular peaks, the analysis program was occasionally closed.	

#### 4.8 Version 6.22 Corrected Defects List

#	Category	No.	Description	Remarks
1	User Authentication tool	10278	When it turned ON [Refer to a Windows Domain] at the time of user authentication tool extension, the user who exists in a domain was not added.	
2	Multi Data Report	10327	When the multi data report was performed by batch processing, the multi data report for the and afterwards time was not outputted.	
3	Batch	10372	When a batch file was saved in a text format from batch analysis, some items were missed in the contents of the shutdown.	
4	Data Analysis, PDA Data Analysis	10423	Change of manual-integration was not reflected in the peak-detected result which was displayed on the <Integration Time Program> dialog.	
5	Audit Trail	10424	When the manual-integration and the integration-time-program were changed simultaneously, the changes of the integration-time-program were not displayed on the audit trail log.	
6	LC Analysis	10451	When the shutdown was performed by setup which does not turn Off the pump of LC, the pump had stopped after the shutdown.	
7	Postrun, Browser	10455	The tooltips were not displayed on the buttons of toolbar.	
8	Data Analysis, Data Comparison	10463	When a data file was outputted with [Export Data]-[Export Chromatogram to Data File] of [file] menu of LCsolution <PDA Data Analysis>, it corrected so that the data file could be read by LabSolutions.	
9	LC Analysis	10476	The mobile phase settings were not reflected in equipment by less than 2.4 ROM version of CBM-20 A/lite.	
10	Log Browser	10477	When it continued operating PC for one week or more, there was a case where a log was not registered rarely.	
11	LC Analysis	10509	For the [CMD information] opened from a control strip, the file save by the file name of more than 8 characters was not completed.	
12	LC Configuration	10527	The initial value of the system check parameter "Max Number of Valve Rotations" of the CDD detector was changed into 40000 from 1000.	
13	LC Analysis	10532	The sort function was made possible even when [column list] was displayed from the instrument parameter view.	
14	Data Processing	10535	In quantitative calculation that the curve fit type is quadratic, when a solution was not able to be found, it changed so that it might be displayed on the [Check Result] as "N.I. (High)" or "N.I. (Low)." N. I. (High) : when peak area is larger than the local maximum. N. I. (Low) : when peak area is smaller than the local minimum.	

#	Category	No.	Description	Remarks
15	Report	10559	When it indicated by the chromatogram for every detector and PDA data was read by the summary compound report item, the chromatogram of PDA was not drawn on a layout screen.	
16	LC Analysis	10567	A setup of the 0.1C unit was not completed at the cell temperature of RID-10A.	
17	LC Analysis	10572	When the start wavelength of data extraction of SPD-M20A was specified as the multi-chromatogram table, the message "mismatching of a wavelength" was displayed at the time of tab movement.	
18	Report	10579	"Compressibility Setting" of LC pump (LC-20AP/20ADXR/30AD) parameter was not outputted to a report.	
19	Multi Data Report	10580	By the template editor of the multi-data report, when the reference type of other sheets had two or more "sheet names", report creation was not able to be carried out correctly.	
20	Multi Data Report	10581	By the template editor of the multi-data report, when the whole line and sequence of other sheets were being referred to, the renewal of reference did not operate correctly.	
21	LC General	10619	The intensity unit "RIU" of the RID detector data was displayed as "RI".	This defect occurs in version 6.11 and later.
22	LC Analysis	10845	When the sum total from B.Conc to D.Conc was set to 100.0 at the Low pressure gradient mode, there was a case that A.Conc was set to 100.0 in LC-2010.	

#### 4.9 Version 6.22 SP1 Corrected Defects List

#	Category	No.	Description	Remarks
1	LIMS Connecting Option	10646	When LabSolutions Ver.6.1-6.11 was updated to Ver.6.12 and later, LIMS Connecting Option Settings were not transferred correctly.	
2	LIMS Connecting Option	10649	The data with a number of result tables was not correctly grouped.	
3	LIMS Connecting Option	10650	When [Add row header] was checked and [Add column header] was not checked, the column headings of the sample information of the upload data were shifted to the left.	
4	LIMS Connecting Option	10655	When [Output only identified peaks (ID# > 0) in order of their ID#] was checked, the upload data without ID# column was sorted randomly.	
5	GPC data analysis	10761	When the [RT/MW Range Setting] of PDA detector was opened in GPC data analysis, there was a case that the [M.W.] button was disabled.	
6	GPC data analysis	10762	When the datafile on the configuration of [detector A+PDA] was opened by GPC data analysis, [detector A] was always displayed first. When [PDA] was displayed and another datafile on the configuration was opened, it changed so that [PDA] was displayed first.	
7	LC Report	10811	When the datafile is specified as noise data of [Noise/Drift Calculation] by PDA data analysis and the chromatogram item is displayed in Data Report, an application error had occurred.	
8	PDA data analysis	10814	Background compensation was not performed at PDA data analysis.	This defect occurred in version 6.22.

#	Category	No.	Description	Remarks
9	LC Analysis	10831	When data acquisition started with a method file in which [Acquisition Time(PDA)] was unchecked, an application error occurred.	This defect occurred in version 6.22.
10	PDA data analysis	10849	When PDA data was converted to ASCII format, negative value in LC 3D Data had been converted to the value that is correct one plus 1.	This defect occurred in version 6.22.
11	LC Analysis	10854	When [Data Acquisition Mode] was [2D] in the SPD-M30A, the SPD-M30A method file edited by Ver.6.11~6.20SP2 did not work correctly at the mode.	
12	LC Analysis	10855	When there were [Cell Temperature Auto] setting errors or [Suppressor Control Time] setting errors in CDD [Instrument Parameter View], error messages had not been displayed.	This defect occurred in version 6.22.
13	System configuration	10858	The combo box of the 2D wavelengths was blanked in the SPD-M30A system configuration set by Ver.6.11~6.20SP2.	
14	System configuration	10859	When the [Data Acquisition Mode] set by Ver.6.11~6.20SP2 was changed to [2D] mode, nonexistent ch8 was displayed as the reason for the change.	
15	General	10863	When three days had been passed after PC was started, LSSClientLicenseManagerMain.exe was terminated for a brief moment. It occasionally caused print errors, and so on.	
16	LC Analysis	10866	When CTO-10AC was manually configured in the [System Configuration], Analysis program could not connect to the instrument.	This defect occurred in version 6.22.
17	LC Analysis	10870	In some firmware version of CBM, the functions under development were displayed.	

#### 4.10 Version 6.31 Corrected Defects List

#	Category	No.	Description	Remarks
1	System Suitability Test	10502	The result of System Suitability Test showed nothing in the case when one-byte space was included at the head of the batch file name.	This is the problem only on the display, the results are saved properly.
2	Multi Data Report	10530	There were cases that no error log was recorded when Multi Data Report was not created.	
3	LC Analysis	10547	With the system of LC Security Mode On (the function to wait until cell temperature and cooler temperature get stable) , instrument's key lock was not locked during the wait time.	
4	User Authentication tool	10608	In the system where LabSolutions IR and LabSolutions LC/GC were configured to share the same Shimadzu User Authentication Tool, when user groups with LabSolutions LC/GC(or IR)'s rights were edited from the computer of LabSolutions IR(or LC/GC), the LabSolutions LC/GC(or IR)'s rights were eliminated unintentionally.	
5	LC Mobile Phase Settings	10611	At the Mobile Phase Settings window, the items and check boxes for pump B,C,D's mobile phase C & D were missing in the configuration where LC-30AD is included with its Compressibility Setting on.	
6	Report	10616	In the report output of the batch table by [File] > [Print Batch Table] menu, the comment of the batch table was not output.	
7	Administration Tools	10632	The setting of "Print report when saving data file in the data analysis" could be edited and be saved with the checkbox on, even when the security policy setting of "Create PDF file when saving data file" was off.	This defect occurs in version 6.20 and later.

#	Category	No.	Description	Remarks
8	Batch Analysis	10651	An error message was displayed on cancelling the pause of batch analysis, in which the method file set in the batch table was also set in the startup or shutdown settings.	
9	GC Postrun	10653	Noise/Drift values were not output in the chromatogram view of the Postrun window for the GC data, which were acquired with the configuration of 2 lines but not included any detector in the line 2.	
10	PDA data analysis	10660	In the ASCII output of SPD-M30A data, [# of Channels] were always output as "0". The number of multi-chromatogram channels is output properly from this version.	
11	PDA data analysis	10665	Contour View was not updated at the time when ASCII-exported data files were read into PDA data analysis window.	This defect occurs in version 6.20 and later.
12	GPC Postrun	10807	Data Report was not saved into data files on the GPC Postrun window when closing data files, even after the Data Report was saved on the Data Report window.	This defect occurs in the GPC Postrun of version 6.22 and later.
13	Report	10812	There were cases that "Data Set No." was output in the report when postrun processing was executed on the Data Analysis window.	
14	LC Analysis	10816	A chromatogram was displayed at an incorrect magnification when starting data acquisition immediately after changing measurement modes (Analytical/Semi-Preparative) in the instrument parameters of RID-10A.	This is a defect of displaying a chromatogram in the Data Acquisition window. The acquired data are correct and displayed correctly in the analysis program.
15	Report	10817	When outputting a report with a new method report item, the tab position of the items of the detector B in the instrument parameters was different from that of others. The default setting of the tab stop of the detector B was different from that of the other instruments.	This defect occurs in version 6.11 and later.
16	Data Processing	10824	QA/QC parameters were not saved in the method file which was exported from data file by "Save Method File As".	This defect occurs in version 6.22 and later.
17	Multi Data Report	10829	In the system of version 6.20 or later which had been updated from version 6.11 or earlier, The result tables of the Multi Data Report, which were created on version 6.20, were not displayed in the Data Manager.	
18	GPC Postrun	10833	Chromatogram in the Chromatogram View disappeared when data files of only PDA detector, were rollbacked to the Original Data.	This defect occurs in the GPC Postrun of version 6.22 and later.
19	Method Scouting Solution	10835	It required a long time to Create Batch on Method Scouting Solution (option software), this problem has been fixed.	
20	Report	10838	In the Spectrum report item, the "Lambda min" was always output as integer in the header even when it was specified to output the figures after the decimal point.	
21	GPC Postrun	10856	In the GPC Summary report, chromatogram were not output properly for data of more than 2 detectors, when "Channel" was set as "Select Channel" and "Display chromatogram" was set as "Each Detector" or "Each Channel" in the property.	This defect occurs in the GPC Postrun of version 6.22 and later.
22	GC Analysis	10872	The column information in the [Injection Port] tab was not updated when the column information was changed from [Settings] in the [column] tab on the instrument parameter view.	

#	Category	No.	Description	Remarks
23	Report	10874	From this version, in the Calibration Curve report which are output by batch processing, the concentration, deviation(%), deviation and accuracy(%) in the table are calculated from the latest calibration curve obtained by the batch processing.	By setting Calibration Curve report at the last standard sample in the batch table, the report outputs the same result as those of the Quant Browser.
24	Agilent-LC Analysis	10884	The results of "Check Raw Data" for data acquired by Agilent-LC analysis were output as "NG".	
25	LC Analysis	10886	Analysis stopped at the second row of batch table with the status of "Waiting for Start Signal" in the condition as below. With SIL-30AC system in which the "Acquisition cycle time optimization" is enabled, And the LC Stop Time is shorter than that of Acquisition Time of detectors.	
26	Log Browser	10895	When Realtime Analysis, Offline Editor, Postrun Analysis, Browser or GPC Postrun was closed, "Close Application." was not recorded in the Log. When a user was logged out after Realtime Analysis, Offline Editor, Postrun Analysis, Browser or GPC Postrun was closed, "Logout." was not recorded in the Log. The order of the log is changed so as to record "Logout." after "Close Application." is recorded.	

#### 4.11 Version 6.40 Corrected Defects List

#	Category	No.	Description	Remarks
1	Report	10589	In the Chromatogram report item, the cell temperature of Detector B was mixed up with Detector1 Channel2's cell temperature.	
2	Batch Analysis	10615	If "Cancel" in System Check window was clicked, the System Check Setting would be initialized.	
3	LC Analysis	10875	When confirmation window for saving a file was showed up, the Customized Toolbar would disappear.	
4	Agilent LC Analysis	10877	When Agilent-LC Realtime Analysis Program was closed during analyzing, it wouldn't launch up again.	
5	Agilent LC Analysis	10907	Agilent-LC Realtime Analysis Program couldn't save instrument comment in method files and data files.	
6	Data Analysis	10909	When opening GPC chromatogram data files created by LCsolution GPC option software, LabSolutions aborted in some cases.	This defect occurs in version 6.22 and later.
7	LC Analysis	10915	When method files of SIL-30AC system, in which the Pretreatment Mode was not "Standard", were imported to the system of SIL-20A / SIL-20AC / SIL-20AXR / SIL-20ACXR, LabSolutions failed to run analysis.	
8	LC Analysis	10916	LabSolutions failed to download method when executing at LC systems configured with CBM-20A and LC-30AD, where CBM-20A ROM version was Ver.2.40 or before (not supporting Solvent blending) and "LPGE Unit" or "FCV-10AL(vp)" was set to LC-30AD.	This defect occurs in version 6.22 and later.
9	LC Analysis	10922	LabSolutions failed to run analysis for vial number 11 or larger in the SIL-30AC systems in the case that the method parameter of SIL-30AC Pretreatment Mode was "Pretreatment Program" and the program contained "vial.n" commands with "0" as its 1st parameter ("0" represents control vial rack).	This defect occurs in version 6.22 and later.

10	LC Analysis Window	10925	When the LabSolutions was updated to version 6.31 from version 6.20 SP1 or before, the view mode of the analysis window for existing CBM-20A systems were changed to "Control Panel" mode.	
11	Quant Browser	10936	[Set Same Reasons for All Files] check does not work in [Audit Trail Log – Input Reason].	
12	Administration Tools	10937	LSSLicenceMergeTool can not specify merge destination.	

#### 4.12 Version 6.40 SP1 Corrected Defects List

#	Category	No.	Description	Remarks
1	LC Analysis	10955	The On/Off setting of the [Solvent Blending] for LC-30AD was not reflected on the instrument, and the Solvent Blending were not performed.	This defect occurs in version 6.22 and later.
2	Data Analysis	10959	When the noise calculation method of the integration parameter was set to "EP", the S/N value had been doubled.	This defect occurs in from version 6.00 to 6.40 SP1.
3	GC Analysis	10962	[Acquisition Start from Instrument] didn't work correctly.	This defect occurs in version 6.31 and 6.40 SP1.
4	GC Analysis (Batch Processing)	10963	In the User Program of dual line batch processing, [After Data Processing] - [Parameter] of 1st line could not be set on the user program.	
5	General	10970	When the LabSolutions uses the CLASS-Agent authentication database, and if the CLASS-Agent authentication database had been restored in version 6.11 SP2 or earlier, there was a case that the LabSolutions service could not be started after the LabSolutions was updated to version 6.20 or later.	This defect occurs in version 6.20 and later.
6	General	10975	When restoring the CLASS-Agent authentication database, some settings of LabSolutions - [Administration Tools] weren't restored correctly.	
7	Report	10982	When LCsolution's report format files containing Method Report Items were used on the LabSolutions without GPC license, the characters of <GPC Parameter> and <GPC Method> were output in the report.	This defect occurs in version 6.22 and later.
8	GC System configuration	10988	On the system configuration settings, GC-2018 was not listed in the GC [Model] and could not be configured.	This defect occurs in version 6.31.

#### 4.13 Version 6.41 Corrected Defects List

#	Category	No.	Description	Remarks
1	Audit Trail	10534	LabSolutions with SIMDIS option displayed an error message and failed to save when saving data files created by GCsolution[Ver.2] with Audit Trail.	This defect was fixed in version 6.31.
2	Calibration Curve	10576	With a quadratic formula or a cubic formula for the calibration curve, a multiple number of concentration values could be obtained with respect to the area value. When the area value was small and both positive and negative values were calculated for the concentration value, the larger value was always displayed as the concentration value. The method used for calculating the concentration value has been re-evaluated, so that the calibration point(s) being used are taken into consideration. As a result, negative values may be displayed for the concentration value.	

3	MultiData Report	10659	When template files were overwritten, the created date was updated with older date.	This defect was fixed in version 6.31.
4	Report	10667	In the Autosampler(HS-20) of [GC Instrument Parameters] of method report item, the "Trap Equilib. temperature" was mixed up with the "Trap Desorb. temperature".	
5	MultiData Report	10822	With the setting of [Grouping] output, when sheet header or footer was adjacent (above or below) to items, data reports were not output in proper order.	This defect was fixed in version 6.31.
6	Data Explorer / Data Manager	10873	Application error occurred on the detail condition setting window of [Filtering View] when "AND" or "OR" was cleared in the "AND OR" column.	
7	LC Analysis	10882	In the [Instrument Parameter View] of the CDD detector, intensity unit was corrected from mS/cm to S/cm as a right unit.	This defect occurred in version 6.22 and later and was fixed in version 6.40.
8	GPC Report	10887	In GPC calculation results report item, Area or Area% of RT/MW range information might be output only halfway, resulting from the RT/MW range information of more than the number of peaks being not output.	
			In GPC calculation results report item, "Resolution(GPC)" and "GPC Calibration Slope" were output even for RT/MW range information. These parameter has been changed to output only for peak information.	
9	MultiData Report	10905	When multiline characters were described in the header or footer, the header or footer were output with left-aligned style. Right header/footer is output with right-aligned, center header/footer is output in the center from this version.	
10	Batch	10911	When a batch analysis was resumed after it was paused, the batch queue disappeared in rare cases.	
11	Report	10928	In the system configuration report item, "Solvent Blending: OFF" was reported even when using the pumps not supporting solvent blending. This item is not reported if the pumps don't support solvent blending.	
12	LC Analysis	10934	With the configuration of LC-2030/2040 with SPD-M10Avp or SPD-M20A, the settings for ICM (starting acquisition from instrument) were not shown in the [Start Acquisition] tab of the [Setting Options] window.	
13	LC Analysis	10958	When ICM function (starting acquisition from instrument) was performed with the "Upload instrument parameters on the start of analysis" setting On, the instrument parameters for SPD-M10Avp, SPD-M20A and ELSD were reset to their initial values.	
14	Report	10977	In summary (compound/concentration) report item, chromatograms were not output in the layout screen when data files without quantitative results were read.(Chromatograms were output in the preview screen or the generated report.)	This defect occurs in version 6.22 and later.
15	Data Analysis	10992	On the Data Analysis windows, it was always possible to save (update) data files even when they were not changed.	
16	MultiData Report	11007	Decimal point mark was output as "period" in the report even when the OS locale setting (Region and Language options) of decimal point was set as "comma" (such as German).	This problem was not the case for the Standard Cells.
17	Batch Analysis	11029	Postrun batch analysis failed when processing the data files converted from Chromatopac data.	Data files converted by LabSolutions version 6.4.1 and later can be processed properly.

18	GC Analysis	11046	GC parameters were not output in the method reports which were output from the Data Acquisition window. (Report setting in the report template file "LSS Method File.lsr" was not correct and fixed.)	This defect occurs in English version 6.31 and later.
----	-------------	-------	---	---

#### 4.14 Version 6.42 Corrected Defects List

	Category	No.	Description	Remarks
Common				
	Analysis	10931	RealTime Batch analysis could be started when prohibited characters was set in the batch.	
		10976	When the method file enabled audit trail option was edited during the RealTime Batch analysis, the user name was not set in the audit trail log of the method file.	
	Postrun	10941	When opening the ASCII output data file, some status logs (ex. Pump pressure) could not be loaded.	This defect occurs in version 6.20.
	Report	11010	Peak profile was not drawn on the [Peak Profile] report item when the maximum intensity was under 1mAU.	
	Quant Browser	10990	Export Quantitative Results was outputting incorrect values when used on a PC with a language configuration that uses a comma as the decimal marker (e.g. Norwegian, Russian).	This defect occurs in version 6.31.
		11012	On the Quant Browser, chromatograms remained in the [Chromatogram View] even after data files were closed.	
		11017	The enlarged range was not maintained in [Chromatogram View] when [Method View] is changed from the [Edit] mode to the [View] mode after enlarged chromatogram.	
		11018	In the [Chromatogram View] of the Quant Browser, even when the view mode was set as [ID Peaks], whole chromatogram was displayed when data files were loaded.	
		11035	In the [Spectrum View] of the Quant Browser, the spectrum was not background-compensated even when the "Background Compensation" was checked in the method.	
		10973	When saving the method file, the quantity result of the data files were cleared.	
	Calibration Curve	11072	Accessory information on the calibration curve in the data file wasn't saved right version 5.63 or later, and there was rarely a case an application error occurs when reading the data file.	This defect occurs in version 6.31.
	MultiData Report	11019	MultiData Report creation was failed in Batch Analysis when the version of other files were administrated and MultiData Report template was updated after the MultiData Report settings were set in the batch.	This defect occurs in version 6.20.
		11084	The point in the graph was plotted as zero level, when the cell referred by the point was blank.	This defect occurs in version 6.20.
	Management Tools	10871	The application log was not correct when date files were copied from a backup database in the Data Manager.	
		11013	An error occurred when the backup procedure was started with the "Delete source data after backup" option.	This defect occurs in version 6.22.

		11079	The projects which created in earlier version than current version could not be edited.	This defect occurs in version 6.31.
	General	10645	The LabSolutions Service supports automatic restart after failure.	
		11005	LabSolutions Service failed to start on the computer that has [SQL Server Compact 3.5 Service Pack 1] installed.	
LC				
	LC Analysis	10617	The LabSolutions Service supports automatic restart after failure.	
		11055 11073	When the method file preserved again from a data file was used for whether it was made using the template function in version after 5.51 less than 5.71, it was operational impossibility by the Pump tab or the Compressibility Settings in the Instrument Parameter View.	This defect occurs in version 6.1 and later.
		11080	When using Control Panel GUI, lamp icon was displayed on the CDD Detector.	
		11071	The method file was not modified in the RealTime Batch analysis with the "Start pretreatment for next sample during current data acquisition" setting.	
	QA/QC parameter	11053	The upper limit value of the Noise/Drift Check of the QA/QC parameter couldn't be established by the detector outside the LC-2030C(3D)/LC-2040C(3D) or Analog detector.	
	System Configuration	11074	When [Data Acquisition Mode] was [3D] on the PDA detector configuration, 2D wavelentghs was displayed in the system configuration report item.	
GC				
	GC Analysis	10998	There was a case the actual base rate of GC-14B detector could be different from the configuration setting when the base rate was changed from the default value except for Detector number 1.	
		11004	The system configuration setting was not applied to the instrument when [AUX-AMC] was removed from [Modules Used for Analysis].	
Agilent-LC/GC				
	Analysis	11043	Realtime Analysis, Offline Editor, Postrun Analysis, Browser or GPC Postrun was not launched up when Agilent-LC/GC Realtime Analysis was terminated immediately after launching.	This defect occurs in version 6.40 and later.
		11107	If the anti-virus software (Trend Micro Inc.) is installed, there was a case that Agilent-LC/GC Analysis does not work.	This defect occurs in version 6.20 and later.
		11011	Response speed of Agilent-LC Analysis has been improved.	This defect occurs in version 6.40 and later.
		11044	There was a case that an abnormal program termination occurred during the analysis with the following Agilent LC pumps, G4220A, G4220B, G4204A, G4204B.	This defect occurs in version 6.40 and later.
		10999	In the System Configuration or the Instrument Configuration of G1888, an application error was displayed.	This defect occurs in version 6.40 and later.

#### 4.15 Version 6.43 SP1 Corrected Defects List

	Category	No.	Description	Remarks	
Common	Postrun	11126	In the Postrun Batch, the unedited method file used by an unknown sample was saved. And when the version of method is administrated, the Method ID of the method used in the batch file was increased after the batch processing in the Postrun Batch.	This defect occurs in version 6.42 and later.	
		11147	Some temporary files were not deleted, when performing data acquisition or Postrun Batch.	This defect occurs in version 6.42 and later.	
	Report	11015	When a data file was loaded into the Chromatogram Report Item in which the end of the time range was set before the start time of the data acquisition, an application error occurred.		
		11103	When report format files of chromatogram items created on the version less than 6.22 were used, the status information was not drawn as the specified colors.  - Peak top comments (Unidentified peaks/Undetected peaks) - Pump A~D degassing unit pressure - Oven B~D temperature  In this version, to recover the report format files to proper status, the color settings for above items and SFC status are initialized when using the report format files.	This defect occurs in version 6.22 and later.	
	Assistant Bar	11098	On the Analysis window, when the toolbar had been customized, there were cases that the Assistant bar of the Analysis window did not appear when opening the window.		
	Quant Browser	11006	When a data file was deleted and another data file was added after method file saving in the Quant Browser, invalid data files were displayed in the Quantitative Row View.		
		11009	When "Administrate the version of data files" was checked in Security Policy Setting and a batch file was opened and saved in Quant Brower, the data files in the batch file remained in editing after closing the batch file or Quant Brower.		
		11120	On the Quant Browser window, the properties of the chromatogram view were not stored.	This defect occurs in version 6.31 and later.	
	Data Acquisition	11150	Status curves in the graph view of the Data Acquisition window might disappear when running an analysis after over 60 minutes passed since [Realtime Analysis] program had been opened.	This defect occurs in version 6.42 and later. This is a defect of displaying status curves in the graph view of the Data Acquisition window. The status curves are acquired in the data correctly.	
	General	11157	System Administrator has no rights in Analysis, Postrun, Browser or GPC Postrun application, when both IR and UV license exists in a system.	This defect occurs in version 6.42 and later.	
	LC				

LC Analysis	10591	On the systems of FRC-10A, the fraction vial number and the flow rate were not properly displayed on the instrument monitor (detail).		
	10620	On the systems of FRC-10A, when manual fraction operations were performed during analysis, the operation logs were not properly recorded in data files.		
	11086	On the batch analysis, when the "Acquisition cycle time optimization" was enabled, the batch addin of "fraction vial number" did not work properly.		
	10862	On the LC systems without using autosampler, when analysis is registered and the status got ready, "Waiting for start trigger" is shown on the status from this version.		
	11124	On the LC systems of CDD detector using "auto" temperature control for the CDD detector, when the column oven temperature was changed, the temperature value for the CDD detector was not updated until the CDD detector setting tab was opened.	This defect occurs in version 6.11 and later.	
	11136	When using 3 or 4 LC pumps in a system, the setting for pump C and D in [Mobile Phase Settings] were not displayed properly.	This defect occurs in version 6.11 and later.	
	11142	When enabling "Use Define Unit" and setting the "Unit" with over 7 characters in the system configuration of Analog Input detector for LC-2030/2040, the intensity values in chromatogram reports were not multiplied by the "Factor". Up to 7 characters can be set for the "Unit" in this version. Please set the "Unit" again within 7 characters. Also, when setting the "Unit" as "nRI", "uRI" or "mRI", the intensity unit in chromatogram reports were output as "nRIU", "uRIU" or "mRIU" respectively, and the intensity values in chromatogram reports were not multiplied by the "Factor". Please select [OK] again in the system configuration of Analog Input detector for LC-2030/2040.		
ASCII Export	10590	When ASCII files were exported for the UV and RID detector data, the section names of their status log were not properly output. In this regard, however, the section names are not properly output in the exported files which were acquired in the version from 6.11 to 6.43.	This defect occurs in version 6.11 and later.	
Auto Purge	10605	When method files of pump/solenoid valve configuration which were different from the actual system were used for Auto Purge, there were cases the Auto Purge window could not be closed or canceled.		
GC	Report	11143	When reading the report file of GCsolution into the LabSolutions, Display Items in [GC Instrument Parameters] of Method item were not converted properly.	This defect occurs in version 6.42 and later.

#### 4.16 Version 6.43 SP2 Corrected Defects List

	Category	No.	Description	Remarks
LC	LC Analysis	11167	When SCL-10Asp, LC-10ADsp or CTO-10ACsp was configured in the [System Configuration], analysis program could not connect to the instrument.	This defect occurs in version 6.41 and later.

#### 4.17 Version 6.50 Corrected Defects List

	Category	No.	Description	Remarks
Common				
	Report	10562 11139	When the Postrun Analysis was launched by [Browse] of [Data] menu in the Data Analysis window, there was a case that the analysis data acquired by the method file opened in the Data Analysis window was not opened initially. This happened depending on the length of the method file name.	
		11069	In the report of Chromatogram items and Summary report items, the base line, USP line and Peak Detection Mark for detected peak were not displayed in the chromatogram graph when the start or end point of the peak was not included in the time range.	
		11161	When data report format was saved after editing in the Data Report editor, the edited edition was not actually saved.	
	Batch Analysis	10904	The amount of space on the hard disk drive was not checked before running Data Acquisition. If the hard disk drive does not have enough space required to run Data Acquisition, the acquisition is stopped.	
		10995	From this version, when restarting batch analysis, "Estimated End Time" is updated immediately.	
	System Suitability Test	11089	When the System Suitability Settings were specified for compounds and then several compounds were deleted from the compound table of the data processing parameter, the results for the deleted compounds were output as "-" in the system suitability test report.	
	Batch Analysis	11096 11129	An error occurred when restarting batch analysis after pausing and editing its execution range.	
	General	11123	The Windows registry for specifying the settings of LabSolutions was deleted during uninstallation.	
	Data Manager	11153	In a system using Microsoft SQL Server, when the number of characters in the Comment (Remarks) for Signature exceeded its limit, its log was not registered in the Log Browser. An error message is displayed when the Comment exceeded the limit from this version.	
		11182	When a file which had been "Uploaded(Done)" was analyzed in Postrun, its Upload Flag status was not reset to None. From this version, the status is reset to None for this case.	

	11209	When OK button was clicked without any change in Data Comment or Comment Modification window of the Sample Information View, the Sample Information change log was registered in the Log Browser.	
Quick Batch	11156	When using the autosampler unit such as SIL-10A series which has no need to specify the "Tray name", when batch file was opened in the Quick Batch Analysis dialog, the specified vials in the batch table were not painted on the Tray View.	
Data Analysis	11128 11169	On the Data Report editor or Batch Table Report editor window, when report format files were selected (opened) from the most recently used files listed in the [File] menu, an application error occurred.	
	11234	When opening the data file, there was a case that analysis application ends abnormally very rarely.	This defect occurs in version 6.42 and later.
Batch Analysis	11179	When "Wait (/ Pause) after downloading instrument parameters" was checked in the "Run Mode" of batch table, some batch add-in parameters were not downloaded before waiting (/ pausing) the next acquisition. * For example, a batch add-in "Solvent Blending" parameter used by Method Scouting Solution wasn't downloaded before waiting (/ pausing).	
Postrun	11183	Data files displayed in the "Select Background Data File" window were different from the data files displayed in the Data Explorer	
	11200	When a data file was edited and saved in Data Analysis, the report format file in the data file was not applied in the data report.	
	11185	When opening another data file while displaying the manual integration bar at the same time in <PDA Data Analysis> and <Data Analysis>, the error "An unsupported operation was attempted" sometimes occurred.	
CLASS-VP File Conversion	11189	CLASS-VP data files acquired by a particular system configuration which had been configured manually in the CLASS-VP could not be converted to LabSolutions format properly.	
	11235	When CLASS-VP data or method files, which contained SIL-10A series in the system configuration, were converted to LabSolutions format, the syringe volume value was not properly converted. In addition, in the LabSolutions version 6.43 SP1 or later, application errors occurred when converting such CLASS-VP files or when opening those files which were already converted from such CLASS-VP files. These defects have been fixed in this version.	
PDF output	11207	In the computer where the SkyPDF Pro Driver Printing Preferences at the version 6.42 or earlier had been edited and then upgraded to the version 6.43 or later, PDF files could not be output with some windows users.	
Multi Data Report	11221	In the Multi Data Report Viewer, cells in the multi data reports (Imdr) could be edited after the Page Settings for Sheet was closed.	

LC

Audit Trail	11030	The method file's audit trail log for the instrument parameter change "Fraction collector"(enable/disable) for FRC-10A was not recorded.	
LC Analysis	11049	With the system configured with only a PDA detector, the log of operations on the monitor bar or the toolbar (stored in the data's acquisition log) was always recorded with 0.000min as the operation time.	
	11095	When a method file of the system with SIL-10ADvp without sample cooler option was opened in the system with other autosampler with sample cooler, the "cooler temperature" of the method file was initially set to 4 deg. C. From this version, the temperature is set as the default value in this case.	
GPC Analysis	11108	On the GPC Calibration Curve window, when data files were added into the Chromatogram View, it was displayed in the time range of the calibration table, so there was a case that [Select peaks] in the [Pick up] function could not specify the peaks on the view.	
	11164	On the GPC Postrun Analysis window, molecular weight values were not properly calculated when the integration parameter "Auto" was specified with the [Max Peak] parameter between 1-5.	
	11181	On the GPC Postrun analysis, when the Mark-Houwink conversion was enabled, Mv, Mv/Mn and Intrinsic Viscosity values were not properly calculated. Proper values are calculated from this version. To get proper values for the previous data with the Mark-Houwink conversion, process the batch postrun or execute [Method] > [Analyze] from the menu.  In addition, the parameter change of alpha and K values in the "GPC Calculation" parameter tab was reflected wrongly on those values for the Standard polymer in the Mark-Houwink conversion. (In this version, it is reflected on the values for Unknown polymer in the Mark-Houwink conversion.) Along with this correction, alpha and K values for Standard polymer is editable on the Mark-Houwink parameter setting dialog from this version.	
Batch Table Wizard	11226	In the batch table wizard 2nd page, the tray setting function was not available (unintentionally disabled) for the systems of SIL-10A series, SIL-10ADvp, SIL-20A series, LC-2010 or SIL-HT as the autosampler.	This defect occurs in version 6.42 and later.
File Conversion	11158	Depending on the system configuration, there was a case that the following message appeared every time when method file was opened. "[231d] The system configuration for this method is different from the current instrument configuration."	
LCsolution File Conversion	11184	LabSolutions could not open the method file or data file created by LCsolution if the file contained the non-alphanumeric characters in its unit serial number information in the system configuration. LabSolutions opens such a file by replacing the non-alphanumeric characters to space characters.	

Report	11159	For the autosamplers described as below, the "Sampling Speed" values of less than "1" were rounded and output as "0" in the method report (LC Instrument Parameters). SIL-10ADvp, SIL-HTA/HTC, SIL-20A/20AC/20AXR/20ACXR, LC-2010.	
System Configuration	11170	When several ovens and pumps were configured with a CBM-20A controller, application error might occur when configuring the system configuration.	
	11202	When fraction collector FRC-10A version 5.0 or later (RoHS compliant) was connected, a detector setting became editable in the FRC-10A's system configuration though the function is not supported.	
	11203	The dialog title of the system configuration for supercritical controller B was shown as "supercritical controller A".	
Instrument Parameters	11172	In CBM-20A/lite systems supporting the "Acquisition cycle time optimization", the instrument parameter of controller "Pretreatment overlap time" was editable even when the "Autosampler pretreatment beginning" wasn't "Manual".	This defect occurs in version 6.42 and later.
	11201	On the [Needle Stroke Settings] window for the SIL-30ACMP, the initial value of the "Distance from the rack surface" for the Control Vial was not correct.	This defect occurs in version 6.31 and later.
Enhanced GxP Support Functions	11175	When using CBM-20A/lite version 3.0 or later with its "Enhanced GxP Support Functions" enabled, "Instrument On/Off" operations executed by LabSolutions were always logged as "Instrument Off" in the output window and the application logs.	This defect occurs in version 6.42 and later.
GC			
GC Analysis	11160	In the GC system configuration, when injection unit was not added in the line, the max temperature of GC column oven was set without considering the max temperature of the column.	
	11178	Values less than 0C could be input in the column temperature without checking the "CRG check box" on the [Instrument Parameter View]. *CRG check box on the [Instrument Parameter View] means using CRG.	
Agilent-LC/GC			
Analysis	11078	A user could not take over an Agilent-LC/GC instrument used by the same user in another PC.	

#### 4.18 Version 6.60 Corrected Defects List

	Category	No.	Description	Remarks
Common				
	Quant Browser	11133	In the Quant Browser, the on/off operation for the calibration level could not be performed if the data type was not "All".	
		11248	In the Quant Browser, when opened data files and then closed its method file, an application error might occur in a subsequent operation.	
	Data Acquisition	11190	In certain situations the Data Number was added to the data files acquired in "Single Run".	

Data Explorer	11256	After performing a sort in the [Get the file from other Instruments] window, different files were downloaded.	
Data Analysis	11260	When no peak was detected in a data file, [Display not identified peaks as peaks with zero area (height)] did not work.	
	11276	When the [Split Peak] was executed in the manual integration, the peak retention time was outside the peak start and end time range.	
General	11267	If LabSolutions was updated in a system in which there was a project where delete had failed, then LSS Service did not start.	This defect occurred in version 6.50 and later.
	11320	If LabSolutions was updated in a system in which the "Test Manager" Rights Group had been deleted, then LSS Service did not start.	This defect occurred in version 6.50 and later.
	11329	The LabSolutions Service could not start after LabSolutions was upgraded to version 6.42 or later, if there were any method files with a name including an apostrophe(').	This defect occurred in version 6.42 and later.
	11270	There was a case in which starting the analysis program for a Shimadzu instrument failed if an LC/GC license for a Shimadzu instrument was added to an environment where an Agilent LC/GC analysis program had been used.	
Administration Tools	11282	A backed up MDB format database with a report set file could not be restored in the LabSolutions system.	This defect occurred in version 6.50 and later.
	11294	When using Oracle, projects with linked data files and report sets could not be backed up.	This defect occurred in version 6.50 and later.
	11296	When a project with linked data files was backed up with both the "Period of backup data" and "Delete source data after backup" options selected, the state of links within the project became inconsistent.	This defect occurred in version 6.50 and later.
LIMS Connecting Option	11279	Locked data files were repeatedly transferred to the LIMS system.	
	11284	LIMS Connecting Option did not start in systems with large number of projects.	
Multi Data Report	10652	Items allocated in a merged cell did not operate correctly.	
	11135	When the values in a merged cell were used, different values were displayed in Edit Mode and in Print Layout Mode.	
	11166	In the Multi Data Report Template Editor, the blank cells were plotted in the graph when the data range of the graph was changed by extending the cell selection.	
	11213	When "number" or "LabSolutions" is selected and "Decimal Place" or the number of significant figures is set in the cell, the cell was not displayed in correct format in the Multi Data Report.	
	11243	"Cross Point To Another Axis" in Axis settings in the Graph did not operate correctly.	
	11261	When cells that are in "LabSolutions" format and that have items set are merged, then the data is not displayed properly in the Multi Data Report.	
Calibration Curve	11297	The data files with Report Confirmation report could not be saved in [Calibration Curve] window.	This defect occurred in version 6.50 and later.

	Report Set	11305	When a report set was created before registering import log of the data file, the data processing logs of the data file were not contained in the report set. In this case, an error occur and the report set will not be created.	This defect occurred in version 6.50 and later.
	Data Manager / Data Explorer	11313	If [Apply the contents of [File Information] and [Keyword] to all import files] button was clicked when importing multiple files, non-editable sample information values such as Date Acquired were copied.	
	Data Manager	11337	If Margin of SkyPDF Pro Driver has been set, [Confirmation results] position was deviated in [Confirm Result File] function.	This defect occurred in version 6.50 and later.
LC				
	LC Analysis	11228	In i-Series (LC-2030, LC-2040) systems, when running a batch analysis with a batch table in which there is a row with "Tray Name" empty, the batch analysis proceeded without a warning and failed at the analysis for the row with the empty "Tray Name".	
GC				
	GC Analysis	11198	The Injection Unit Analysis mode audit trail was displayed even though the parameter did not change.	
		11258	Even when no AOC was set in a line, the "Polarity in Ready" parameter in the GC unit was automatically changed from "Close" to "Open".	This defect occurred in version 6.20 and later.
Agilent-LC/GC				
	Analysis	11195	Option information was not set in data files acquired in an Agilent-LC/GC Analysis.	This defect occurred in version 6.20 and later.
		11262	Incorrect method file name or batch file name was set in data files acquired with files opened with Drag and Drop.	This defect occurred in version 6.20 and later.
		11273	When data was acquired without injection in an Agilent-LC/GC Analysis, the vial number was displayed in the Data Manager [Sample Information 19].	This defect occurred in version 6.20 and later.
		11289	When "Take Over Acquisition" was executed, no Data Number was added to the data files.	

#### 4.19 Version 6.70 Corrected Defects List

	Category	No.	Description	Remarks
Common				
	Data Manager	11121	The project could not be backed up when it contained method, batch or report format files whose file size is 0 bytes.	
		11122	Method, batch or report format files with version numbers greater than 1 could not be copied from the backup database.	
		11293	An error occurred when the window size in Data Manager was made smaller.	
		11312	The ISTD Area and ISTD Height of LC/GC data files were not registered in the peak information of their ISTD group set in the compound table.	
		11346	The reason for rejecting a signature was not displayed in the [Confirm Sign Files] dialog if its level was the highest among signature rights given to the user who executed the signature.	This defect occurs in version 6.50 and later.
		11371	When [Confirm Result File] is performed multiple times, the Data Manager may become unstable.	

	11404	If the screen resolution is too low, buttons on "Confirm Result File" dialog were not displayed.	
	11239	When files were exported with the "[Apply this for all selected items]" option, the "[File Conversion]" setting was not applied for all files.	This defect occurs in version 6.42 and later.
	11416	When creating a data acquisition log report for an instrument by executing [Create Report Set] in Data Manager, there was a case in which the log report included another instrument's operation log if the latter instrument name matches partially to the former one. For example, creating a data acquisition log for an instrument "LC-1" might include operation logs for an instrument "LC-10".	
	11416	Executing [Create Report Set] in Data Manager failed if a data which was acquired by [Priority Run] is included in the data for the report set.	
Data Manager/Multi Data Report	11301	Significant digits were displayed differently from the setting in the Data Processing Settings in Data Manager or Multi Data Report.	
Data Explorer	11299	Files obtained from the database were displayed as locked files if the originals on the database were locked.	
Log Browser	11277	Some codes were not displayed correctly in Log Browser.	
Log Browser / Data Manager	11425	When the [decimal symbol] of [Region and Language] settings in the Windows Control Panel was set to comma (such as German), the printing function did not work in the Log Browser and the Data Manager.	This defect occurs in version 6.50 and later.
Multi Data Report	11291	An error occurred when "Show the template used recently" option was used in creating a multi data report.	
Analysis	11356	The method report was not output when performing analysis using a batch file in ASCII text format.	
Report	11359	In the [Peak Table]/[Quantitative Results]/[Grouping Results] report, there was a case in which the total area or height of peaks were different from the total of each peak's area or height in the least significant digit.	
Batch Analysis	11364	The Instrument Method ID was not properly recorded in the data file when a method file was adjusted to the instrument configuration at the start of batch analysis.	
Data Analysis	11370	There was a case in which the peak was not split, when executing a manual integration [Split Peak].	
Backup	11384	When a project was deleted using "ProjectInfoCleaner.exe," the logs that contained the deleted project log could not be backed up.	
Realtime Analysis Program	11660	In the case of instrument systems where it is necessary to start data acquisition manually by clicking the start button, without automatically starting data acquisition by Autosampler or start signals, the user setting items such as for single run, setting options, and the window display layout were not saved, and when the acquisition program was re-started, the setting items returned to the original settings. This problem has been fixed.	This defect occurs in version 6.50 and later.
LC			

LC Analysis	11349	When using the method transfer function in the Nexera-i Method Transfer System with PDA detector model (LC-2040C 3D MT), the converted PDA detector [Time Constant] parameter was not reflected in the method file.	
	11245	When an ELSD-LT II was included in the system configuration, LabSolutions could not display the Control Panel GUI in the data acquisition window.	This defect occurs in version 6.42 and later.
	11324	The initial value of the [Temperature Limit] parameter for SFE-30A was changed from 90 °C to 93 °C.	
	11333	When using an SIL-30AC in a Nexera UC system with [Injection Type] set to "Loop Injection" and [Loop Injection Type] set to "Partial Loop," the suction volume and injection volume limits were calculated using the [Excess Volume] value, so a warning message about invalid injection volume was incorrectly displayed at the start of analysis.	The actual suction volume and injection volume is correct.
	11366	In the detector-less model for Prominence-i series (LC-2030C LT) configured with optional RF detector or RI detector, instrument monitor items for the optional detector were not displayed in the [Instrument Monitor Bar] or [Control Panel GUI] of the data acquisition window.	
	11418	When using RF-20A/20AXS detectors of version 2.02 or later with CBM-20A/lite, the unsupported mode "3D" was shown in the RF detector's configuration setting [Wavelength Mode].	This defect occurs in version 6.31 and later.
Batch Table Wizard	11326	When the LC system was configured without an autosampler, the batch wizard function caused application errors in the analysis program.	
Report	11311	In i-Series (LC-2030, LC-2040) systems, the following items were not displayed in the [Method] - [LC instrument parameters] report. - pump [P.Max] - pump [P.Min] - autosampler [Air Gap Volume] Also, the [Air Gap Volume] parameter was not recorded in the audit trail log.	
	11334	When using an SIL-30AC in a Nexera UC system with [Injection Type] set to "Loop Injection" and [Loop Injection Type] set to "Partial Loop," the unused parameter [Excess Volume] was displayed in the [Method] - [LC instrument parameters] report.	
LCsolution File conversion	11348	When a batch file created in LCsolution with the [System Check] setting empty was imported into LabSolutions, the [System Check] setting was converted to a meaningful setting "LC OPTION=3."	
GC			
Data Explorer	11280	Chromatopac GC data files could not be converted to LabSolutions GC data files correctly.	
Audit Trail	11358	When the type of an injection unit or a detector unit is changed, the audit trail does not log all of the parameters changed but only the change history of the type.	
GC Analysis	11395	In some cases LabSolutions aborted after editing a time program in GC-2018.	

	Data Analysis	11345	When executing the manual integration such as "Move BL (Move the start or end of the peak)" or "Insert Peak", the area of the peak might include an error which came from one extra data point.	This defect occurs when the GC data was acquired by the following sampling rate: 4, 8, 12, 16, 24, 28, 32, 36, 48, 56, 64, 72 (msec)
Agilent-LC/GC				
	Analysis	11309	Batch files created from ASCII format batch files could not be loaded in Agilent-LC/GC Analysis.	This defect occurs in version 6.40 and later.
		11342	An ASCII format batch file could not be imported unless the filename ended with lower case ".txt".	This defect occurs in version 6.40 and later.
		11343	When reading a batch file in ASCII format in Agilent-LC/GC Analysis, the method report settings could not be loaded.	This defect occurs in version 6.50 and later.
		11344	Batch files converted from ASCII format could not be opened in Data Analysis.	This defect occurs in version 6.40 and later.

#### 4.20 Version 6.71 Corrected Defects List

	Category	No.	Description	Remarks
Common				
	Batch Table Wizard	11272	In the Batch Table Wizard, when [Save Batch File] was selected and the batch file name included a period then the batch file was saved with a name where the last period and trailing string were replaced with the batch file extension ".lcb" or ".gcb."	
	Batch Edit	11357	When starting the Postrun program by selecting [Instrument] in the [Select Instrument] dialog, then the method report settings were not applied when creating a new batch file using a template file.	
	Batch Analysis	11310	The [Output AIA File] function did not work when executing a batch file that was saved in ASCII format.	
		11507	If a method file with the system configuration different from the actual analysis system configuration is specified as a startup method file or a shutdown method file for [Batch Setting], then the analysis program might stop responding when executing batch analysis.	This defect occurs in version 6.70. There also was a defect in version 6.70 in which the method was incorrectly judged as being for a different system configuration. (No.11522)
	Report	11441	The [Peak Top]-[Position] property settings for the following report items were not saved. - Chromatogram - Summary(Conc.) - Summary(Compound) - Summary(Data) - GPC Graph - GPC Summary	
	Data Analysis	11400	When opening a data file as reference data, the [Select Channels] dialog was not displayed if the data file was acquired on a one detector, two channel system.	

		11448	In the Postrun program, if [Calculate identified peaks only] in [Method View]-[Performance] was selected, then "Resolution(USP)" was not recalculated when the [Compound] table retention time was changed.	
	Quant Browser	11393	In the [Quant Browser], when opening a batch file that had already been analyzed, some data files were not opened in the [Quantitative Results View] even though they were analyzed by the same method file as in the batch's first row.	
	Report Set	11450	Operations might not be recorded in the report set Data Acquisition Report if they were executed just before creating the report set.	
	Installer	11488	On PCs to which the KB3170455 security update program for Microsoft Windows7 has been applied, when LabSolutions is installed, the SkyPDF PDF creation tool is not correctly installed.	
		11529	When LabSolutions was installed on a PC connected to an external hard drive and the drive detached after the installation, then when using LabSolutions the message "The feature you are trying to use is on a network resource that is unavailable." was displayed and LabSolutions did not work.	
		11532	If the procedure in "LabSolutions upgrade tool" to be executed via the update of LabSolutions from version 6.60 or earlier to version 6.70 or later was canceled or failed during execution, then LabSolutions might not be updated correctly.	This defect occurs in version 6.70 and later.
LC				
	LC Analysis	11233	The number of digits displayed in [D2 Lamp Change Interval] of the SPD-10Avp detector was different from the number of digits displayed on the device.	
		11323	When operating the valve during data acquisition in a Subcontroller "Option Box" system with a Solenoid Valve Unit or Flow Line Switching Valve, then the operation log recorded in the acquired data file was incorrect.	
		11389	During analysis on SPD-M30A or i-Series 3D models, if the data acquisition time was changed to a time that had already passed, the analysis window hung up. Changing acquisition time to a past time is not accepted from this version.	
		11407	When using a method file in the SIL-30AC system where the method file was created in the SIL-30AC system and then diverted in the SFE-30A in a Nexera UC system, the "Needle Stroke Settings" of SIL-30AC was changed to "39mm."	
		11456	In SPD-M30A/LC-2030 PDA/LC-2040 PDA 2D (multi-wavelength) mode and on the SPD-30AM detector, when the Chromatogram Type was changed from "Absorbance" or "Average" to "MaxPlot" in the Event Program, the "MaxPlot" intensity was not output properly.	

	LC System Configuration	11522	When the LabSolutions in which a system configured with SIL-20AC system existed was updated from version 6.60 or earlier to version 6.70, [Enable to specify Injection Volume in method] in the SIL-20AC configuration settings could not be saved as [ON] until [Auto Configuration] was done over again. This caused another defect in which a warning message, "[241a] The system configuration for this method is different from the current instrument configuration." was displayed when an analysis was executed with a method file created before the LabSolutions update.	This defect occurs in version 6.70. The defect does not occur in configurations that include SIL-20A/20AXR/20AC XR. The defect might cause bug No.11507 to occur.
	Data Analysis	11445	An application error might occur when opening a data file in the Chromatogram View where the [Zoom Chromatogram] in [Chromatogram View Display Settings] was "Stack" and the data file was acquired under the following conditions: - System has a fraction collector. - Number of channels for the detector is two or more.	
	GPC Analysis	11449	In the GPC Postrun window, when editing the data processing parameters for [RT/MW Range Settings] (on the GPC Calculation tab) for detector B, the chromatogram for detector A was shown in the [RT/MW Range Settings] dialog.	
	Report	11422	When enabling [FRC simulation] in the Chromatogram report item, the output was drawn with an incorrect rack number displayed.	
	Audit Trail	11444	When changing data processing parameters, an incorrect "[GPC Parameter] Flow Change" was recorded in the audit trail log even though the flow setting had not changed.	
GC	GC Analysis	11220	When using a GPC license and opening [Data Processing Parameters] from the GC "Data Acquisition" application an unnecessary [GPC Calculation] tab was displayed.	
		11434	In the case of a GC-2018 dual line system, even if the "Link Oven Program edit and Acquisition Time." function was enabled, stop times for the detectors could not be changed automatically.	
	Batch Edit	11413	In a GC system with AOC-20i in which [Syringe Capacity] is "0.5 uL," the [Injection Volume] in the batch table could not be set to less than 0.1 uL in accuracy.	
Agilent-LC/GC	Analysis	11406	When an ASCII file on LabSolutions Database was opened in Batch Editor, the file could not be saved in Agilent LC/GC analysis.	
	Analysis	11423	"Method Report Setting in Batch" rights was not applied in Agilent LC/GC analysis.	

#### 4.21 Version 6.72 SP1 Corrected Defects List

	Category	No.	Description	Remarks
	Common			
	Batch Analysis	11499	When executing realtime batch analysis or postrun batch analysis, the method file was updated (overwritten) even if the sample type was "Unknown" and there were no changes to the method file.	

		11505	When the [Insert QA/QC Samples] checkbox was selected in the [Batch Table Wizard] sub-window and the [Next] button was clicked, an application error occurred.	This defect occurs in version 6.71 and later.
	Batch Postrun	11479	In a specific system, method reports were not created.	
	PDA Data Analysis	11491	After the [Tailing Off] checkbox was changed in the PDA integration advanced settings, clicking the [Copy to All Channels] button invalidated the change.	
	Quant Browser	11485	In the Quant Browser, switching the selected data file several times while the manual integration bar was displayed sometimes caused an application error.	
	PDF Output	11530	PDF output failed when the total number of characters in a project name, data No. and data file name was 121 characters or longer.	
	Report	11250	The audit trail for the [Summary (Conc.)] report item was displayed as "Summary Stnd". This message was corrected to "Summary Conc." to match the notation on the screen.	
	Analysis	11464	Default report names of Method Report are modified.	
		11527	When the total number of characters in the [project name], [device name] and [data file name] items exceeded 144 single-byte characters, an error occurred after data acquisition, and the data file was not registered.	
	DataManager	11467	Data Manager was forcibly terminated when [lock] was executed from the main window, or when an automatic screen lock was executed by the security policy, while a Report Set was being created using Data Manager.	
	Installer	11533	In particular systems, LabSolutions Installer stopped, and installation did not finish.	
	Report Set	11548	When a batch analysis was started in the slow performance system, the report set couldn't be created.	
		11586	When the user logged out during realtime batch running and created the report set with the batch, the logs in the report set contained the logs other than the batch operation.	This defect occurs in version 6.71.
	LIMS Connecting Option	11549	Transmission failed when there is no item in "Selected Items" of Data information on "Data (Upload File)" tab of "LIMS Transmitter Settings" tab.	
		11556	Selected items were not transferred when deleting an item from "Selected items" and adding the item again to "Selected items" at Sample Information in "Data(Upload File)" tab of the "LIMS Transmitter Settings" tab.	
	Multi Data Report	11535	Data files registered using Multi Data Register could not be loaded into Multi Data Report Template Editor.	
GC				

	Report	11555	<p>Matched the number of decimal digits between the setting dialogue rate parameters and the corresponding report output.</p> <p>changes :</p> <ul style="list-style-type: none"> <li>- the rate of injector programs (press, flow, and temperature) on GC-2010(plus), GC-2014 and GC-2025.</li> <li>- the rate of oven program (temperature) on GC-2010(plus), GC-2014, GC-2025 and GC-2018.</li> <li>- the rate of detector program (flow) on GC-2010(plus), GC-2014 and GC-2025.</li> <li>- the rate of additional flow program (press) on GC-2010(plus), GC-2014 and GC-2025.</li> </ul>	
		11558	<p>The rate of carrier gas program (press) and the rate additional flow program (press) in the Method report item were always printed in kPa unit.</p>	<p>The target value of programs has already been corrected in version 6.20 (Defects no. 10470).</p>

## 4.22 Version 6.80 Corrected Defects List

	Category	No.	Description	Remarks
Common				
	Installer	11682	It had possibilities that the upgrade tool was aborted during upgrading from version 6.60 or earlier to version 6.70 or later.	
	Batch Analysis	11594	When both "Manage the version of method, batch, report format files" and "Only use method, batch, and report format files from the database" are enabled in the security policy setting, the batch file could not be updated after the batch analysis had finished.	
		11600	When the "Only use method, batch, and report format files from the database" policy setting was enabled and [Take over Acquisition] was executed, the method file editor could not be updated.	
	Selection Administration	11598	Duplicate category items were displayed in the [Selection Administration] window.	
	General	11584	The system became unstable under certain circumstances. This problem has been fixed.	
		11666	The message help information was not displayed in message dialog boxes. This problem has been fixed.	This defect occurs in version 6.72 SP1.
	Data Acquisition	11397	A user who does not have both of two rights [Edit method (Data Processing Parameters)] and [Edit method (QA/QC. SST Parameters)] could not save a method as a new file on the [Data Acquisition] tab page. This problem has been fixed. Starting with this version, a user who has at least one of the rights to edit methods can save a method as a new file. Note that a user who has only the right [Edit Method (New File)] can save a newly created method (not modified) as a new file.	
	Analysis	11627	When the [Only use method, batch, and report format files form database] checkbox was selected, [Start the Priority batch] could not be executed. This problem has been fixed.	
		11659	When the [Only use method, batch, and report format files from the database] checkbox was selected and several batch files which use the same method file were executed simultaneously, errors occurred. This problem has been fixed.	
	Common-Report Set	11548	If a batch analysis was started when the analysis application operation was slow, the report set could not be created. This problem has been fixed.	
	Project Administration	11612	A locked project could be edited when the project was selected and double-clicked. This problem has been fixed.	
	Quant Browser	11575	When opening a batch file in the Quant Browser, if the method file did not exist, only data files were loaded. If data files were added under such condition, they were displayed as disabled in [Quantitative Results View]. This problem has been fixed.	

		11619	NTP (USP), HETP (USP), T. Plates/meter (USP), and Resolution (USP) were not displayed in the table style when no data was opened in [Quantitative Results View] of the Quant Browser. When data was opened, users could set the display settings of these parameters, but after the Quant Browser was closed, the settings were initialized. This problem has been fixed.	
	Summary Report	11581	When a summary report was printed without executing the print preview, the report was output incorrectly. This problem has been fixed.	
	Data Analysis	11591	In the audit trail of the integration time program, in some cases the value was not recorded in the contents of the audit trail log.	
LC				
	Analysis	11799	In the previous versions, the "Injection Volume" values for the LC data acquired without sample injection were output as the values which had been specified at the single run or in the batch table. From this version, to clearly show the data were acquired without sample injection, the "Injection Volume" for these data are output as "0". This change is applied for the data acquired in the modified versions, not applied for the data acquired in the previous versions.	
	Audit Trail	11595	The audit trail log for the instrument parameter of SIL-30AC "Rinse port R2 purge time" was output as "Rinse port R1 purge time" by mistake.	
GC				
	Analysis	11626	Parameters at [HSS Oven Temp.], [HSS Sample Line Temp.], and [HSS Transfer Line Temp.] of the HS-10 could not be changed from the [Instrument Monitor] window. This problem has been fixed.	
		11628	When using the [AOC-5000/6000] in a 2-line configuration, the application was frozen when starting batch analysis with tray name mistakenly entered as "Rack" instead of "Rack 1." This problem has been fixed.	
		10885	When using [AOC-20i], the [Solvent Selection] parameter could not be set. This problem has been fixed.	

## 4.23 Version 6.82 Corrected Defects List

Category	No.	Description	Remarks
Common			
General	11468	The LabSolutions temporary folder (¥LabSolutions¥Work) is now cleaned up periodically.	
	11561	After printing with "Microsoft XPS Document Writer" specified as the printer driver, if the "Save the file as" XPS dialog was left displayed for a certain amount of time, the following error message was displayed, and the program was forcibly terminated. 「 [2330]The analysis program will be shut down. ¥n(Other user may start the analysis, or you open the analysis window with other PC)」	
	11684	In a system whose database service run sluggishly, there was a case that the LabSolutions service did not start.	
	11687	After creating a database, the LabSolutions service did not launch when the first PC was started.	This defect occurs in version 6.70 and later.
	11705	Maximum license number has been raised in LabSolutions system.	
	11744	The duplicate electronic license information has been merged and displayed in license information screen.	
	Analysis	11599	When the [Only use method, batch, and report format files from the database] security policy was changed from cleared to selected, files from instruments that were being used when it was cleared were used in analysis and postrun programs.
11625		When the [Only use method, batch, and report format files from the database] security policy was selected and the [Save method file when downloading instrument parameters] policy was cleared, unnecessary files were registered in the database when a method was downloaded.	This defect occurs in version 6.72 and later.
11633		When the [Only use method, batch, and report format files from the database] security policy was selected, a confirmation message to close the method file was displayed when batch analysis started.	This defect occurs in version 6.72 and later.
11634		When the [Prohibit editing or starting of rows in which batch processing is completed] security policy was selected and a priority analysis was performed, the execution status of the batch row was changed to "not-executed."	This defect occurs in version 6.72 and later.
11593		In entering the reasons for data acquisition, the time difference from Universal Time Coordinated was not displayed in the logs.	
Administration Tool	10582 11023 11501	Even if an item on the [Instrument] tab page of the security policy was changed, the modification date displayed during printing was not changed.	
	11608	When printing the security policy, information that was being changed in the security policy program was printed.	
	11668	When backing up a project with "." in its name, the backed up database could not be restored.	
	11755	There were some cases for the backup process to stop at Backup feature.	
Project Administration	11613	Projects could be edited even by users without the [Change Project Settings] rights.	
Installer	11693	In a specific system, the PC restarted during LabSolutions installation.	

Category	No.	Description	Remarks
Batch Postrun	11713	When a data file was saved in Batch Postrun, the "Modified" date in the sample information view and the "Date processed" in the PDF file for signing were different.	
Software License Management Tool	11741	Even after deactivating and activating after replacing the motherboard, license authentication failed.	
Data Analysis	11709	At the Noise/Drift calculation, using "Background Data" or "Specified Data File" as the noise data, when "Use the height from the extrapolated baseline for S/N" was checked on and the Calculation Method was set as "ASTM" or "rms", the noise and S/N values were not calculated properly.	
Multi Data Register	11752	After rebooting the PC and logging on soon, there was a possibility that the Multi Data Register Service stopped.	
Summary Report	11769	In the summary (Compound) Report Item, when data file is specified and File Lock is set ON, program was occasionally closed.	
LC			
Analysis	11719	When starting single analysis/batch analysis with the systems of LC-2030/2040 series, SIL-30AC/30ACMP, SFE-30A or SIL-20A series, in rare cases the analysis window hanged up.	
	11774	On the system configuration of the CDD detector, the name of "Non Suppressor" has been changed to "Non Suppressor / Optional Suppressor", considering that optional suppressors can be attached in the CDD detector. In addition, with the Non Suppressor systems, suppressor parameters, which were shown with gray and disabled controls in the previous versions, are not shown from this version.	
Data Analysis	11731	The graphs of the Result Spectrum were not properly drawn in the UV Library Search report item.	
Report	11686	On the report editor, there were cases that the report was not properly output with the procedure as below. Load any data file to a report item, then fix the file to the report item by the setting of "Fix a file in the item", then load any other data file to the report editor.	
Data Analysis	11685	Application error occurred when switching Channel ON / OFF while displaying the manual integration bar with 2 channel data.	
General	11622	When the LC-20AB was used as pump A, "Isocratic Flow" was displayed in the pump mode in the [Simple Setting] window of the instrument parameter view, although "Binary pump" should be displayed. ("Binary pump" was displayed in the [Pump] tab in the advanced setting mode and reports.)	
Analysis	11116	Specifying different suppressor or Ch2 option settings in the CDD-10Avp/sp unit than in LabSolutions system configuration settings will prevent acquiring data properly. Therefore, the software was revised to indicate "Not Connected" if that occurs. To use the system, click [Auto Configuration] in the system configuration. The software was also revised to not display "10 msec" as a base period setting choice in CDD-10Avp/sp configuration settings	

Category	No.	Description	Remarks
GC			
Analysis	11754	When the [decimal symbol] of [Region and Language] settings in the Windows Control Panel was set to comma (such as German), the method file created in the GC-2030 system was not saved.	
	11764	When the helium purifier is added to GC-2030, the message "specified system configuration does not match the hardware configuration" is displayed every time. This problem has been fixed.	
	11765	When the helium purifier is added to GC-2030, configuration information may not be displayed correctly in the system configuration window. This problem has been fixed.	
Data Analysis	11544	AART function may not work correctly. This problem has been fixed.	
Agilent-LC/GC			
Analysis	11502	The application name in the [About Realtime Analysis] window was incorrect.	This defect occurs in version 6.40 and later.
	11662	Batch table could be edited during analysis.	This defect occurs in version 6.40 and later.
	11683	Failed to upload instrument parameters.	This defect occurs in version 6.40 and later.
	11698	The application terminated abnormally when the instrument injector configuration was changed while connected to an instrument using the Agilent-GC analysis application.	This defect occurs in version 6.40 and later. Fixed by the Agilent Instrument Control Framework.

#### 4.24 Version 6.83 Corrected Defects List

Category	No.	Description	Remarks
Common			
General	11795	The hard drive became full because LabSolutions output many files in the LabSolutions system folder.	This defect occurred in version 6.72 and later.
	11796	In a system, which used the domain reference feature, the user information was initialized after upgrading LabSolutions.	This defect occurred in version 6.81 and later.
	11831	The system became unstable under certain conditions. This defect has been fixed.	
	11892	The message displayed when other user tried to release the screen lock was modified.	
PC Information	11777	PC information was not displayed in specific conditions. This defect has been fixed.	
Security Policy	11737	The password expiration date was set one day beyond the value specified for its effective period. This defect has been fixed.	
Data Manager	11784	Batches could not be correctly sorted by the registration date in Batch Data Set. This defect has been fixed.	
Batch Analysis	11830	[Estimated End Time] was displayed later than the actual time when batch analysis was executed partially. This defect has been fixed.	
	11834	When the "Only use method, batch, and report format files from database" policy setting was enabled, the version of the method file was updated after the Data Analysis was executed. This defect has been fixed.	

Category	No.	Description	Remarks
Project Administration	11566	When the "Select All Instruments" checkbox was cleared in the [Edit Project] window, all instruments were deselected from "Selected Instruments". This defect has been fixed.	
Multi Data Register	11815	Multi Data Register sometimes stopped after the registration of other files was aborted. This defect has been fixed.	
	11785	When log map information contained symbols, the log could not be registered in some cases. This defect has been fixed.	
	11779	Data files whose name contained ' (single quote mark) could not be registered. This defect has been fixed.	
Instrument Administration	11873	Instrument numbers were not consecutive when instruments were added in some cases. This defect has been fixed.	
Report Set	11767	After a user who had "Sign an old-version file" rights, signed a report set, signing or recreating the report set failed.	
	11811	The sorting process in [Confirm File Information] window displayed for signing has been corrected. The order to display data files in Link Files Sign Check Report has been corrected so that files are displayed in the order that they are displayed in the [Confirm Sign Files] window.	
	11771	When the user created a report set without logging out after data acquisition, the report set included a log that is not related to the instrument used for data acquisition. This defect has been fixed.	
Column Manager	11818	SIMDIS GC Option Software could not be used. This defect has been fixed.	Note: This defect occurs in version 6.81 and later.
	11804	When column information was duplicated, number of injections was also duplicated.	
	11929	When changing the column information in the analysis window, [Number of Injections] in Column Manager is set to 0.	
LIMS Connecting Option	11800	In LIMS Receiver, the text format batch file in UNIX environment couldn't be loaded.	
	11842	The "Apply audit trail function when creating batch file" in instrument policy setting was not reflected in the batch file from LIMS.	
Quant Browser	11701	When "Display ID peaks" was set for chromatograms in Quant Browser, chromatograms were enlarged after manual integration even though enlargement was not selected.	
Data Analysis	11829	When loading an AIA format data file output by a different company's software, the intensity value of the chromatogram became 1/1000 in rare cases.	
	11606	Tailing factor (user definition) was not calculated for vertically divided peaks in some cases.	
	11838	When the identification parameter "Display not identified peaks as peaks with zero area(height)" was changed and then the method view was switched from [Edit mode] to [View mode], resolution was not recalculated in some cases.	
Improved Backup	11883	In Project Backup, "Backup application log entries for files." check box is added. When the check box is checked, the logs related with the data files will not be backed up.	
Analysis	11893	After upgrading LabSolutions, [Tool] - [Option] - [File New] settings were initialized.	This defect occurred in version 6.82.

Category	No.	Description	Remarks
Rights Group Administration	11794	"Get the file from Other Instrument" rights were displayed as "Get the file from database".	This defect occurred in version 6.82.
	10867	Log Browser was displayed as Log Browse.	This defect occurred in version 6.20 and later.
LC			
GPC	11040	In the [GPC Calibration Curve] window, the error values (%) were not updated after the calibration data table was edited. (The error values were updated when the method file was reopened or when the [Data Processing Parameter] window was displayed and then OK was clicked.)	
Quant Browser	11047	The manual integration bar sometimes became disabled in the chromatogram view of the Quant Browser when only ID peaks were displayed.	
Data Analysis	11856	An application error sometimes occurred when deconvolution processing was performed on peaks with the same spectral shape using i-PDeAll.	
	11865	In the [PDA Data Analysis] window, the peak top comment settings of the [Chromatogram View] (graph properties) were not stored and the settings were cleared each time the analysis window was started.	This defect occurs in version 6.80 and later.
GC			
Analysis	11875	In systems configuration using the GC-2030 unit, column information specified in the instrument parameter view or instrument monitor was not applied to Column Manager and audit trail for column management. This defect has been fixed.	
	11534	When the batch processing using dual-line was partially executed, analysis was performed on a batch line other than the specified ones after pausing in some cases. Correction has been made so analysis is performed only for the specified lines.	
	11866	GC-2030 additional flow method could not be specified in some cases. This defect has been fixed.	
	11899	In systems configuration using the GC-2030 unit, even after changing the column information via the instrument parameter edit view, the gas flow rate was not calculated with the changed values. This defect has been fixed.	
	11911	When the GC-2030 unit is a dual column configuration, the column ID of sub column was not displayed in the instrument monitor. This defect has been fixed.	
	11914	The column name and column ID of AFT (Heart-Cut) will be displayed in a system check result. And the caption of column ID will be also displayed.	
	11902	In a dual line configuration, the column ID that was set in line2 column was not displayed in the instrument monitor correctly. This defect has been fixed.	
	11943	The settable range for the total flow rate and purge flow rate has been changed for hydrogen (H2) used on the GC-2030 unit as the carrier gas.	
	11934	In the system configuration of the GC-2030 unit, the column information could be registered when the name of column was blank.	

Category	No.	Description	Remarks	
	11935	In systems configuration using the GC-2030 unit, when the column window of the system configuration is displayed multiple times, an application error occurred in rare cases. This defect has been fixed.		
	11936	In systems configuration using the GC-2030 unit, the default start date of column use in the system configuration was "1899/12/30".		
	11847	Analysis could not be performed on GC-2030 unit on which a column whose column number was 32768 or higher was attached. This defect has been fixed.		
	11944	Carrier gas flow rate control of GC-2030 with a packed column has been changed.		
	Column Manager	11803	The status of the connection between the instrument and column was not displayed correctly after the instrument was deleted. This defect has been fixed.	
		11941	In systems configuration using the GC-2030 unit, [Latest Attached by] on the Column Manager was not displayed properly when the column information was changed via the instrument parameter edit view. This defect has been fixed.	
	SIMDIS GC Analysis	11901	Distillation calculation in External Standard method of SIMDIS GC software was not correct.	This defect occurs only on SIMDIS GC option.
		11954	Default equation of D1160 correlation and Flash Point calculation (MSPEX factor) has been corrected.	This defect occurs only on SIMDIS GC option.

#### 4.25 Version 6.86 SP2 Corrected Defects List

Category	No.	Description	Remarks
Common			
General	11635	When the Method, Batch or Report Format files were versioned, logs were duplicated during backup.	
	11997	When editing the Instruments method file in a locked project, the method ID was issued as 0.	
	11998	When using locked projects and unlocked projects at the same time, method Id was issued as 0.	
	11792	Fixed a bug where [System Management] started up in situations where it should not start.	
	11900	Fixed a bug where the main window sometimes did not start up if on the [Account] tab page in [Security Policy], [Login by Windows account] was ON and [Require authentication when logging in] was OFF.	
	11957	Fixed a bug where if an SQLServer project database was created by setting a folder path with a directory separator character (¥) at the end of the physical file location in version 6.60 or earlier, then projects could not be created when the system was upgraded to version 6.70 or later.	
	11966	Fixed a bug where database creation failed if a folder path with a directory separator (¥) at the end of the physical file location was set for the project in [Create SQL Server Database].	
	11968	Signing failed when using the domain reference feature and the "Require re-input of the password" signature policy was enabled.	
Project Administration	11967	Fixed a bug where project creation failed when copying many method files and batch files.	
Data Analysis	11825	Corrected so that [Clear] is displayed in the data file audit trail log when the calibration curve is initialized.	

Category	No.	Description	Remarks
	11970	On the "Confirm Sign Files" dialog, could not add a comment despite selecting a selection item that can add comments.	
Data Explorer	11033	A user without "Import Files" rights could import files when using "Paste".	
Log Brower	11858	Fixed a bug where the project name was not displayed correctly in some logs when checked by a user without the [Read Project Name] right.	
Backup	11890	Fixed a bug where an error sometimes occurred during backup depending on the environment.	
Batch	11928	Fixed a bug where the method file version was incremented unnecessarily when the last row was to run batch processing of a standard sample.	
Multi Data Report	11927	Fixed a bug where peak data was not output to the report when data corresponding to a grouped item was empty.	
Multi Data Register	11821	Fixed a bug where in an environment with many projects, new data files could not be registered from the multi data register.	
	11886	Fixed a bug where the date and time were sometimes not registered correctly even if the date and time format was set correctly in the locale setting in Log Map Information.	
	11870	Fixed a bug where registration of instrument data files stopped when copying of a result file to be deleted failed.	
	11871	Fixed a bug where the files were not deleted when the folder path was set as a result file and [Delete File] was checked.	
	11942	Fixed a bug where files that were in [Unregistered Files] for more than two weeks were deleted.	
	11959	Fixed a bug where files set for deletion in the log request file were not deleted.	
	11984	Multi Data Register added the data No. to the footer of a PDF file for signatures.	
General	11931	The problem of settings being restored to initial settings for registered instruments that occurred with low probability was fixed.	
	12019	The problem of not being able to register data in a database if the unregistered data results contain a single-quotation mark was fixed.	
	12035	The problem of registration numbers jumping by 1000 when an instrument or column was newly registered was fixed.	
	11996	User information could not be obtained when the domain reference function was used for certain domains	
	12020	The problem of user rights being reinitialized when LabSolutions users are automatically linked to a Windows domain was fixed.	
	12043	The problem with the [Select targets in AD link] window taking a long time to display if the domain reference function is used to reference certain domains was fixed.	
Report Set	11732	The problem of not being able to properly create report sets that include data imported as unregistered data was fixed.	
	11756	When batch analysis was executed using a batch file with blanks at the beginning of the file name, report set creation failed.	
	12009	The problem of not being able to create report sets properly if the sample information view in Data Manager was sorted in ascending order of acquisition date was fixed.	

Category	No.	Description	Remarks
Column Manager	12067	The problem of the instrument disappearing from the [Instrument] tree in Column Manager if the column name or column ID for a column in a GC system configured with multiple columns contains specific characters ("', <, >, or &) was fixed.	
Audit Trail	12024	The problem of sometimes taking a long time to create the audit trail log after changing column specifications or column settings in the instrument when [Enable audit trail function in Column Manger] was enabled in security policy settings was fixed.	
Analysis	11808	The problem of the LabSolutions service sometimes crashing If [Realtime Analysis] was relaunched immediately after it was closed was fixed.	
Data Analysis	11985	The problem of a carriage return being inserted in the middle of the [Group] header line and "Conc.%" being displayed twice when data files are output in ASCII format was fixed.	
Batch	12013	The problem that batch settings for optional software specified with a previous version of LabSolutions were sometimes lost in systems with an upgraded version of LabSolutions was fixed.	Optional software may need to be reinstalled after upgrading LabSolutions.
	12001	The criterion value for system stability was sometimes different in the setting window and the results window. This defect has been fixed. The rounding when a criterion value saved in a file is displayed in the system stability setting window has been corrected. Accordingly, the criterion value displayed in the system stability setting window may differ before and after a version update, even when the same file is opened. Note that the criterion value and determination results saved in the file are not changed by this correction.	
System Configuration	12055	The problem of initial setting values being set to "0.0" for additional column parameters (pH upper limit, pH lower limit, particle size, max. operating pressure, max. flowrate, or cooling switchover temperature) specified for columns registered in the column list using a version prior to Ver. 6.82 but then subsequently upgraded to version 6.82 or later, was fixed.	
Multi Data Report	12033	The problem of repetition settings in multi data report templates not being applied properly was fixed.	
	12048	The problem of text selection settings not following cells moved using insert or delete operations if a selected text is specified in format settings for arbitrary cells using the multi data report template editor was fixed.	
	12054	The problem of the manual entry field specified in the multi data report template for display on the second or later page actually being displayed on the first page was fixed.	
Report	11999	The problem of display settings for the Column Information in method item and the Column in configuration settings item not loading properly for report files created before upgrading was fixed.	This defect occurs in version 6.82 and later.
Data Manager	11970	The problem of not being able to add comments if an available input choice is selected in the [Confirm Sign Files] window was fixed.	
DBCS Migration Tool	11993	The problem of incorrect time values displayed in log events output during migration operations using the DBCS migration tool was fixed.	
General	11968	Signing failed when using the domain reference feature and the "Require re-input of the password" signature policy was enabled.	

Category	No.	Description	Remarks
Data Manager	11903	The title of the [Print Data Information] window was displayed as [Print Data Information].	
Rights Group Administration	11794	The "Get the file from Other Instrument" right was displayed as "Get the file from database."	
Report	12053	The problem of not being able to output factor value settings in reports was fixed.	
Audit Trail	12118	Fixed a bug that takes a long time to display the Audit Trail Reason entry screen for newly added columns when the security policy [Enable audit trail function in Column Manager] is enabled.	
General	12139	Fixed a problem that file registration and reading can not be performed when the length of the file path that combines the project name, device name, data No., data-set No., device No., data file name exceeds a certain level.	
LC			
Batch Analysis	11983	When a batch analysis is being executed for multiple lines and data acquisition is paused and then resumed for the subsequent lines, in some rare cases, certain status log data (such as pump pressure) could not be recorded for data acquired by the next line. That phenomenon did not affect the intensity values of chromatograms recorded in LC data, but it prevented checking the chromatogram because the status log failed to load.	
LC solution File Conversion	12045	The problem of an application error occurring if a method file created using LCsolution with a specific condition is loaded was fixed.  Specific condition: [Pretreatment Program] is specified as the mode in the [Pretreatment] window for a SIL-10A series unit and the method file is operated on the 19th page.	The application error also occurred if a data file from acquisition using the indicated method file was loaded, but the problem was fixed.
GC			
Report	12017	The problem of the column oven title not being printed in method items for dual lines was fixed.	
	12014	The problem of GC instrument parameters to be displayed not being loaded correctly into method items in reports was fixed	This defect occurs in version 6.84.
Analysis	12007	The relay setting problem when PRG A+C are used with a GC-2030 unit was fixed.	
	12006	The problem of rate values for additional flow programs being loaded incorrectly from GC-2030 method files was fixed.	
	11982	The problem of a .NET Framework error sometimes being displayed when the ECD gas parameter was changed for the ECD detector in a GC-2030 system was fixed.	
	11981	The problem of not being able to download temperature programs if PTV or OCI is specified at the AUX5 temperature control port on a GC-2030 system was fixed.	
	11958	The problem of rate values for additional flow programs being loaded incorrectly from GC-2030 method files was fixed.	
	11981	The problem of not being able to download temperature programs if PTV or OCI is specified at the AUX5 temperature control port on a GC-2030 system was fixed.	
	12029	The problem of unnecessary parameters being displayed on the instrument monitor for GC-2030 systems with an OCI injection unit.	This defect occurs in version 6.84.

Category	No.	Description	Remarks
	12058	The problem of GC-2014 systems not sending appropriate detector filter time constant values was fixed.	
	12083	If the line setting is specified for the HS-20 unit, then the initial purge flowrate value is changed from 3.0 mL/min to 0.0 mL/min.	
	12052	The initial pressure setting values for the HS-20 [Pressurizing APC Port] and [Dry Purge APC Port] settings were changed from 0 kPa to 50 kPa.	
	12057	The problem of the GC-2030 upper limit value for linear velocity being incorrect was fixed.	
	11991	The problem of the Quick Batch icon not being displayed on the assistant bar was fixed.	
<b>Agilent LC/GC</b>			
Analysis	11677	Fixed a bug where the operation log was not registered even if analysis was canceled.	
	11707	Fixed a bug where batch settings could not be edited when loading a batch file with "Method report output" enabled and the report format was empty.	
	11715	Fixed a bug where an Agilent-LC/GC analysis application sometimes ended abnormally when saving after inserting a row in the batch table.	
	11722	Fixed a bug where [Prohibit overwriting of other method files] and [Prohibit overwriting of other batch files] in the security policy did not work even if enabled.	
	11723	Fixed a bug where an error occurred when the vial number was incorrect, even if batch injection mode was set to [None].	
	11724	Fixed a bug where the audit trail was not recorded when starting an added instrument for the first time, even if [Apply audit trail function for system configuration] was enabled.	
	11746	Fixed a bug where a PDF file was created even when [Create PDF file when saving data file] in the security policy was disabled.	
	11783	Fixed a bug where the method file saving confirmation window was not displayed at the start of single run analysis.	
	11788	Fixed a bug where the report format delete/add audit trail was registered when [Apply to the data file acquired with this method file.] was enabled in the method file audit trail and batch analysis of standard samples was executed.	
	11802	Fixed a bug where an error occurred when a 3D data file acquired using an Agilent-LC was opened for postrun PDA data analysis and the display setting was clicked.	
	11840	Fixed a bug where [Restore Initial Setting] in the [Edit Table Style] window did not work in the Agilent-LC/GC control function.	
	11855	Fixed a bug where for a data file acquired when the sampling period was not an integer in milliseconds units, if the file was opened for postrun analysis, the "This data file was not able to record all the data at the acquisition." warning message was displayed, despite the fact that all the data was actually recorded.	
	11917	Fixed a bug where the instrument method ID, data processing parameter ID, and calibration curve information ID were not correctly incremented in Agilent-LC/GC analysis.	

Category	No.	Description	Remarks
	11939	The problem of the application crashing if data acquisition is performed using a batch file with text pasted into the Report Format File column of the batch table was fixed.	
	11932	The problem of the application crashing if data acquisition is performed using a batch file with a single-byte space character pasted into the Report Format File or Summary Report Format File column of the batch table was fixed.	
Report Set	11889	The problem of not being able to properly create report sets that include data imported as unregistered data was fixed.	

#### 4.26 Version 6.86 SP3 Corrected Defects List

#	Category	No.	Description	Remarks
Common				
	General	12036	Automatic screen lock did not work even when [Require authentication when logging in] in [Security Policy] is enable.	
LC				
	Analysis	12156	When using standard pretreatment program (Fast-Injection) of LH-40, the mobile phase and the rinse solution mixed in the syringe.	
GC				
	Analysis	12151	When using additional flow controllers, System On/Off of GC-2010/2014 and On/Off settings of additional flow controllers are linked. In addition, the HS temperature control is turned Off when GC system is turned off.	
		12192	The problem that the ROM version of HS-10 is displayed with 100 times value of the instrument was fixed.	

#### 4.27 Version 6.87 Corrected Defects List

#	Category	No.	Description	Remarks
Common				
	General	11885	Fixed a bug that instrument operating status was not displayed when hovering the instrument icon on the main window.	
		12036	Automatic screen lock did not work even when [Require authentication when logging in] in [Security Policy] is enable.	
		12248	Fixed a problem that the character string copied to the clipboard could not be pasted correctly in some cells. Also fixed a problem with incorrect cursor movement when editing double-byte characters, and a problem with incorrect processing when copying double-byte characters.	
		12250	Renamed the log file in the C: ¥LabSolutions ¥Work folder and modified the text in this log.	
	Analysis	11882	Fixed a bug where column settings to devices changed from other applications might not be reflected in the system configuration.	
		12146	Fixed a bug where the previous method file was not loaded when the data acquisition screen was opened with the setting to open the data acquisition screen when the analysis program is started.	

#	Category	No.	Description	Remarks
		12200	If a dialog is displayed from the instrument parameter view during batch analysis and is kept displayed until analysis completion, the analysis program may close.	
		12216	Fixed a bug where [New method] button could be clicked during analysis, and when it was clicked, the display value of the method screen was initialized.	
	Column Manager	12189	Fixed a bug where the contents before releasing column setting on "the latest attached" date and the "the latest attached by" are displayed after the column setting is released from the analysis program.	
	Report	11925	The report output defects below of "Wait Time" in the "Startup Settings" of the "Batch Settings" have been fixed: · "Wait Time" was output as "Pumping Period". · Its units was output as "sec".	
		12182	In the [ID#] and [Group#] of the peak top comment of the chromatogram item, the [Pre-String] and [Post-String] set in the format were not reflected in the report.	
	Audit Trail	11819	Fixed a bug where the reason input screen does not appear when "Follow my system report set settings" is changed from disabled to enabled, even though "Input reason for project administration change" in security policy is enabled.	
	Data Analysis	11937	For peaks vertically divided, there was the problem that peak retention time was displayed in "1st Half Width(5%)", "1st Half Width(10%)", "1st Half Width(50%)".	
		12124	The lower side of the icon of the Manual Integration Bar was displayed hidden somewhat.	
	Postrun	12211	In the Quant Browser, Data Browser, Calibration Curve and MS Data Analysis, the manual integration could be executed in the chromatogram popup menu even if there is no manual integration user right.	
	Data Analysis	12207	When acquired data by Thermo Scientific DAD detector, [PDA Data Analysis] window did not open.	
	Common - Data Manager	11956	Fixed a bug that Security policy signature "Level 1 Accept only by the operator who acquired data" is enable, but the data file can be accepted by other analysts.	
		11969	Fixed a bug that error message does not appear when authentication of signature fails in domain cooperation.	
		12092	Multiple PDF files can be imported in Data Manager at the same time without any exception error.	
		12215	Fixed a bug where the right-click menu was disabled if you selected a batch of search results for the first time after searching a batch data set in the Data Manager.	
	Log Browser	12197	The log registered by MultiData Register could not be displayed correctly in Log Browser.	

#	Category	No.	Description	Remarks
	MultiDataRegister	12198	Fixed a bug that the name of the project that should be displayed is not displayed for users without "Read Project Name" rights when there is a log registered by the Multi Data Register.	
		12203	When a data file was locked and trying to update the data file, the data file remained in "Unregistered Files". In this case, the data file will be registered as "Need to Change" in Unregistered File Manager for this version or later.	
	System Backup	12208	If Agilent Driver was not installed after updating from ver.6.84 or earlier, system backup was failed.	
	Security Policy	11887	Removed the security policy item "Prohibit local login on failure" as it did not have effect.	
	Project Administration	11895	Project can be deleted if the project files are not being edited at the same time.	
	User Administration	12011	Fixed a bug where if user information is edited and then [disable user] is checked, the user becomes disabled as expected but other edited settings are neither saved nor captured in audit trail.	
	Batch Edit	12258	Fixed an issue where text batch files created before version 5.93 may not load properly with version 5.95 and later.	
	Installer	12254	Fixed a bug that could cause registry permissions to be set incorrectly during installation. This problem sometimes prevented the device maintenance tool from connecting to the device.	This problem only occurs for version 6.86 and later versions.
12255		Fixed a bug that caused "Microsoft .NET Framework 4.6 .1" "Microsoft Visual C + + 2017 Redistributable" to be installed incorrectly, which prevented applications from running when running the LabSolutions installer on Windows 7 (Not SP1).	This problem only occurs for version 6.86 and later versions.	
LC				
	Analysis	12157	On the systems of LH-40 or FRC-40, when peak integration fraction were performed during analysis, the peak of the peak end point and the peak start point overlaps could not be fractionated.	
		12180	Fixed a bug in which the Column IDs displayed on the device control panel, device monitor, and device monitor detail screens were not updated while the analysis program was running.	
	Report	12120	Fixed a bug that in the method item "Column Information" and the environment item "Column" where the column particle size, Max Usable Pressure, and Max Usable Flow Rate are not printed.	
		12123	Fixed a bug that caused table styles in the "Column information" method item and the "Column" system configuration item to display and print in a different order.	
	Audit Trail	12088	Fixed a bug in which audit trails were not recorded when column information was changed via the GC -2030 device parameter edit screen with the "Enable audit trail function in Column Manager" security policy enabled.	
GC				

#	Category	No.	Description	Remarks
	Audit Trail	12088	Fixed a bug in which audit trails were not recorded when column information was changed via the GC -2030 device parameter edit screen with the "Enable audit trail function in Column Manager" security policy enabled.	
	Analysis	12147	When using the "Acquisition Start from Instrument" function, parameters set on the GC-2030 or CAGC-100 are not applied to the software. This problem has been fixed.	
		12148	When using the GC-2030 method, whether save or not is confirmed repeatedly. This problem has been fixed.	
		12228	Fixed a bug that the conditioning time displayed when conditioning the SCD detector may be incorrect.	
		12229	Transmission file error is occurred in the System Configuration of GC-2014. This defect has been fixed.	This defect occurs in version 6.86 and later.
	Report	12130	Fixed a bug that Event value of Current for detector in Time Program or Prerun Program in Method items is not printed properly.	
		12144	Fixed a bug that when the report format from GCsolution is loaded, the parameter of property in Chromatogram item is incorrect.	This defect occurs in version 6.80 and later.
		12234	Fixed a bug that items related to the SCD detector are displayed in the wrong format when the config / method report of GC other than GC-2030 is output.	
		12167	Fixed a bug that in SIMDIS Chromatogram item, the baseline may not be printed correctly.	This defect occurs only on SIMDIS GC option.
	SIMDIS GC Anlysis	12165	Fixed a bug that the Error message in SIMDIS Method Setting window was not correct.	This defect occurs only on SIMDIS GC option.
		12166	In some cases, a distillation GC Postrun was considered to have changed the BP - RT Calib. Curve parameter even though it was not changed.	This defect occurs only on SIMDIS GC option.
Thermo-LC/GC				
	Analysis	12171	Fixed a bug that the Realtime Analysis application for the Thermo-LC/GC device may not work properly when after execution of LabSolutions System Backup and System Restore.	
		12173	Thermo Scientific LC/GC did not work when there was no Agilent-LC/GC control license.	

#### 4.28 Version 6.87 SP1 Corrected Defects List

#	Category	No.	Description	Remarks
Common				
	Report	12313	LabSolutions could not open/use report format files containing chromatogram items saved in version 6.83~6.86 SP3.	This defect occurs in version 6.87.

#### 4.29 Version 6.89 Corrected Defects List

#	Category	No.	Description	Remarks
Common				
	General	12250	Renamed the log file in the C: ¥LabSolutions ¥Work folder and modified the text in this log.	
		11930	Fixed a bug that users on LabSolutions were deleted automatically, when the system using domain reference feature failed to get user information on the domain.	
		12387	In some cases, data files generated by the "Auto Copy" function lost the file extension.	This defect occurs in version 6.86 and later.
		12412	An error occurred when starting "LSSLicenseMergeTool.exe" (program for aggregating USB dongle licenses) and it could not be started.	This defect occurs in version 6.86 and later.
	Startup/ Shutdown	11025	When you tried to register a startup/shutdown by specifying the method file that is currently open in the analysis window, the message "Another application is using this file." was displayed and the startup/shutdown was not registered.	
	Batch Analysis	12253	Fixed an issue where a previous version overwrites a method when an analysis is resumed after a batch analysis is paused if the "Only use method, batch, and report format files from the database" and "Administrate the version of method, batch, report format file" security policies are enabled.	
	CBM-201m	12269	Fixed a bug that the display order of Ch1 and Ch2 changed on the Data Acquisition Window when using CBM-201m.  In the following cases, the Integration parameters of Ch1 and Ch2 on data files and method files may be switched. *When a file created or obtained in the defective version is opened in this version (ver. 6.89) or later. *When a file created or obtained in a version prior to version 6.86 is opened in the version in which the problem occurred.  This defect occurs only when the version is upgraded, and do not occur if the file is used only within the same version.	This defect occurs in version 6.86 and later.
	Analysis	12365	Analysis process stopped on some Windows OS other than English and Japanese.	
	Postrun	12307	In the [Properties] sub-window of the data file, [Sample Name] could not be saved.	This defect occurs in version 6.87 and later.
	Data Comparison	12275	Fixed a bug where multiple data files could not be added from the dialog on the data comparison screen.	
	Report Set	12096	Fixed the bug that when creation of several report sets which has same name, were requested simultaneously, no error occurred and the either Report Set failed to be created. *Data files could not be unlinked if the "Link data files with a report set" setting was enabled.	

#	Category	No.	Description	Remarks
	Audit Trail	12272	Registration of the audit trail logs took time when a column was newly registered with the security policy "Enable audit trail function in Column Manager" enabled.	
	Installer	12249	When upgrading from a specific version of LabSolutions, sample projects for LC and GC were not displayed on the sample project list or old version of sample projects were created.	
LC				
	System Configuration	12311	The ROM version of the valve connected to the SIL-40 series autosampler did not appear in the configuration information.	
		12309	When using RF-20A/20AXS detectors of version 2.02 or later, the unsupported mode "3D" was shown in the RF detector's configuration setting [Wavelength Mode].	This defect occurs in version 6.87 and later.
	Analysis	12310	When using SFE-30A without a rack changer with SCL-40/CBM-40/CBM-40lite systems, the extraction operation could not be performed even if the rack number was specified correctly.	
		12188	After teaching information of LH-40 or FRC-40 was changed, method files specifying vial numbers that does not exist in the teaching information could not be opened.	
		12317	In the SIL-40 series internal & external needle rinse method, the "Diluent vial" setting in the "dilution" Pretreatment program was not saved.	
		12333	When the autosampler SIL-40 series system was used with the stack injection time set longer than the LC Stop Time, it was not possible to stop the autosampler after the analysis was completed.	
		12336	On systems with SCL-40/CBM-40/CBM-40lite, LabSolutions has fixed a bug that could cause analysis to start before the autopurge process was complete when analysis was registered while autopurge was in progress.	
		12377	In some cases, when using "psi" pressure unit with SCL-40/CBM-40/CBM-40lite systems, the pump pressure setting values and time programs could not be downloaded correctly to the pumps when the pressure setting exceeded 4850 psi.	
		12385	With SFE-30A systems controlled by SCL-40/CBM-40/CBM-40lite, when "Import from Clipboard" was executed on the LC Time Program, the set values of "Vent Valve" and "Extraction Valve" for the SFE-30A was not imported correctly.	

#	Category	No.	Description	Remarks
	Shutdown	12319	When shutdown was performed on the system of CDD detector with suppressor, the instrument error "Regeneration suspended because of pump off. (Suppressor)" occurred.  Regardless of this bug fix, on the system of CDD detector with suppressor, perform the shutdown by checking the checkboxes of all units as the unit to be shut down. Performing shutdown with some units out of the way may cause system protection (Example: Pump OFF, Oven OFF) and cause the above instrument error.	This defect occurs in version 6.87 and later.
		12394	When using the 3D(PDA) models of LC-2030/2040 series, the shutdown function did not work properly in some cases.	
	Column Administration	12278	Under the security policy "Administrated version of data files", compound names were not displayed in the Column Data Browser.	
	Batch Add-In	12230	Fixed a bug that LabSolutions could not start analysis in an environment containing optional software such as Method Scouting, which would result in a "Extended column settings are not correct." message.	
	Postrun	12267	On the Postrun Analysis window, application error occurred when opening data that had been acquired with fraction collector, with the fraction ended at the end of the analysis time.	
GC				
	Analysis	12303	When connecting to GC-2030 after upgrading LabSolutions, the warning message "The specified system configuration does not match the hardware configuration." was displayed.	This defect occurs in version 6.86 and later.
	Quant Browser	12312	On the Quant Browser, an error occurred when opening batch files that analyzed only Line 2, and the quantitative calculation of the data of Line 2 could not be performed.	
	Report	12334	Fixed an issue that the reports may not be printed when analysis is performed with using report format files created on GCsolution.	
Agilent LC/GC				
	Analysis	12264	When using a method with [Retention Time Update] in [Identification] set to [Average], the application crashed.	

#### 4.30 Version 6.92 Corrected Defects List

#	Category	No.	Description	Remarks
Common				
	General	12322	In the domain reference feature, the system became unstable due to insufficient memory when there were many users.	
		12416	In a system whose database service run sluggishly, there was a case that the LabSolutions service did not start.	

#	Category	No.	Description	Remarks
		12462	When checking the status of a batch queue from the LabSolutions main window [Instruments] or from the Analysis application on each device, a handle leak occurred. If you have been using LabSolutions for a long time without restarting it, the system might run out of memory and became unstable.	
		12375	The problem that caused license verification to fail after installing an additional hard drive was corrected.	
		12490	There was a case that LabSolutions terminates during batch processing. (Corrected a problem with the program terminating incorrectly in the process of reading chromatograms.)	
		11576	If the password is incorrect when unlocking the screen lock in User Administration, the log was not registered.	
		11950	PC information was not registered when a large value was set for [Account lockout duration] or [Reset account lockout counter after] in the Windows security policy.	
		12501	Fixed a bug where the program when running "LSSLicenseMergeTool.exe" (program for aggregating USB dongle licenses), displayed as "Failed in the connection to the service." and the program was terminated.	
	Installer	12447	When MSXML4 was installed, the problem that install process was stopped and PC was restarted unintendedly has been mitigated. There was a case that LabSolutions was not installed correctly by this defect.	
	Program Check	12372	Fixed a bug that an error might occur if a user who was not allowed to write to LabSolutions installation folder, run "Check the Program Files".	This defect occurs in version.6.86 or later
		12499	When LabSolutions was upgraded from Ver.6.88~6.89 to Ver.6.90 or later, there was a case that the first Program Alteration Check resulted in an error.	
	Data Manager	12040	Data Manager took a long time to display a list of Batch Data Set when there are many Batch Data Set.	
		12111	Data Manager did not start when searching with space character.	
	System Backup	12265	Fixed a bug that caused a system backup to fail when a path specified as a backup destination has longer than 50 characters. With this fix, the maximum path length is 80 characters. For differential backup, the limit will be 55 characters.	
	System Restore	12185	In System Restore Report, [INF] (meaning information) was changed to [DBG] (meaning debugging).	
	Project Administration	12459	Fixed a bug that when LabSolutions security policy [Input reason for project administration changes] was enabled and any project was locked from [Project Administration], the project name was displayed in the [Project Name] column in the corresponding operation log on the System Administration log. (the [Project Name] column should be blank.) If [Input reason for project administration changes] is disabled, this defect will not occur.	

#	Category	No.	Description	Remarks
	Analysis	11350	The data file was not registered when setting more than 32 characters for Option Item 8, 9 or 10.	
		12140	Even after changing the column information via the instrument parameter edit view, the column information may not be reflected in the system configuration. This defect has been fixed.	
		12433	Realtime Analysis window ended incorrectly when data files containing over 16 chromatogram/status logs are used as the reference data.	
	Realtime Batch	12463	When the Realtime Batch for unknown sample with "Data Processing" disabled in "Run Mode" was executed with a method file on the database, the version of the method file was updated.	
	Multi Data Report	12084	A bug that switching from [Print Layout Mode] to [Edit Mode] changes the print area settings for currently opened MultiDataReport Template was fixed.	
		12353	Fixed a bug that when creating Multi Data Report with a Multi Data Report Template in which [Template Signature] item was set on the Header or Footer, and the project in which the template was saved and the project in which the analysis data files were saved are different, the [Template Signature] was set as blank.	
		12470	Fixed a bug that caused MultiDataReport template editor failed log output and forcibly closed when an error occurred internally while operating the application.	
		12298	Fixed a bug that prevented editing of cells with "Cell Format" set to "Text" on Multi Data Report Template Editor.	This defect occurs in version 6.86 or later.
	Report	12498	Fixed a bug that some items were not displayed when printing the report format from the analysis app.	
LC				
	System Configuration	12475	On the systems using SCL-40/CBM-40/CBM-40lite system controllers, the initial values (values entered when the [Initialize] button is clicked) for the FCV-0206 and FCV-0607 series has been corrected in the System Check (System Configuration) window.	
	Analysis	12404	In systems configuration using LH-40 unit, the checking Max Injection Volume at the start of batch analysis does not work correctly when a method that uses a standard syringe and a method that uses an analysis option syringe are mixed in one batch file. This problem has been fixed.	

#	Category	No.	Description	Remarks
	System Check	12468	When a system check took a long time for the communication with instruments, there was a case that one of the instrument module did not output its result into the system check report (instead of the lacking result, the result of the previous unit was output redundantly). The timeout processing has been reviewed for the communication with instruments during the system check. (Margin of time is ensured, and if timeouts occurred, LabSolutions aborts the system check as a failure.)	
	Shutdown	12464	When shutdown was performed on the system of CDD detector with suppressor, the degassing unit was not turned off.	This defect occurs in version 6.89.
	Batch Table Wizard	12395	When using the SIL-40 Series autosampler, on the 2nd page of the Batch Table Wizard, it was not possible to correctly specify the vials by using the Tray Definition.	
	Instrument Monitor	12502	With the system containing LH-40, when the "Detail..." button was clicked on the instrument monitor (displayed on the right side of the analysis window), the item order was sometimes disturbed and the display was not correct.	
	Method Editor	11293	On the systems using SCL-40/CBM-40/CBM-40lite system controllers, when you entered values into the following forms(tabular forms) on the Method Editor(Instrument Parameter) window and then closed the window without releasing the focus from the form (by clicking [x] button or [Close] button, etc.), the entered values were not retained. [Pump] Purge settings [Autosampler] Needle stroke settings, Pretreatment program settings	
		12452	On the systems using SIL-10ADvp(without cooler), when the method file created before version 6.50 was opened, file save confirmation window was displayed even when the method file was closed without editing its contents.	This defect occurs in version 6.50 and later.
		12469	The initial purge time has been corrected for the autosampler SIL-40 series with multi-rinse option.	
	Data Analysis	12280	Fixed a bug that caused an application error when opening the PDA Data Analysis window. (On the PDA Data Analysis window, there was a problem in the multi-chromatogram reading process according to the display setting of the Chromatogram View.)	
	Report	12471	In the systems using SIL-40 series, there were cases that unintended items were output in the system configuration report. ("Max Syringe Suction Volume" for SIL-40 series without syringe unit, and "Preset Value of Excess Volume" for SIL-40 series of direct injection mode.)	
GC				
	System check	12476	When a system check was performed on a GC using a LAN converter, an empty system check report was output in some cases.	

#	Category	No.	Description	Remarks
		12494	Fixed an issue that the item of Flow Unit Board ADC on the system check report was not displayed correctly.	
	Analysis	12467	When adding rows in the Quick Batch window, [Sample Amt.] did not follow the dilution factor settings.	
		12434	The problem that relay number 9 and 10 cannot be used on time program and pre-run program of GC-2030 with PRG-A+B has been fixed.	
	Batch Analysis	12465	On the Quant Browser, an error occurred when opening batch files that analyzed only Line 2, and the quantitative calculation of the data of Line 2 could not be performed.	This defect occurs when using headspace sampler or AOC-6000.
	Report	12486	Fixed an issue that the pressure value was not displayed on the method report when the [Flow Control Mode] of injection port was [Column Flow].	

#### 4.31 Version 6.101 Corrected Defects List

#	Category	No.	Description	Remarks
Common				
	General	R138445	There were cases that when batch reanalysis was performed using batch files and data files moved from other LabSolutions systems or projects, the data number recorded in the data report and the log (submessage) of "The file is imported" differed from the actual value.	
	Multi Data Report	R131370	There were cases that MultiDataReport template editor failed to output log and abnormally closed when an error occurred internally while operating the application.	
	Postrun	R97347	When batch postrun was executed without the report output, the report in the data file (Data Report) was not updated. The behavior has been improved so that the Data Report is updated in this case. This fix also updates the report format name in the data report.	
	LIMS Connecting Option	R122827	The bug that batch file which is registered in LIMS connecting option caused an error has been fixed.	
	System Restore	R120104	LSSService did not start after System Restore.	
LC				
	Analysis	R145150	On the systems with SIL-40 series, when the Rinse Type was set as OFF, the parameters of Sampling Speed and Sample Discharge Speed were not properly downloaded to the instruments (always the default values of Sampling Speed:5.0uL/s, Sample Discharge Speed:1.0uL/s were downloaded).	
		R103128	During batch analysis, there were rare cases in which communication with the instruments ended abnormally at the start or end of analysis and the Realtime Analysis window hung up. This version has been resolved a memory access violation issue in the data communication for analysis status rendering.	

#	Category	No.	Description	Remarks
		R142718	On the systems using SCL-40/CBM-40/CBM-40lite system controllers, the time information in the "Operation Log" in the data, which were recorded when instruments were operated on the instrument panel(for example Pump On/Off) during analysis, was not correct.	
	System Check	R140662	In the system check report, the name of "High Pressure Valve2 Rotations(Rotor)" for the injection port 2 of the autosampler was incorrectly output as "High Pressure Valve1 Rotations(Rotor)".	
	Shutdown	R121248	When a shutdown was registered from LabSolutions while the LC system was in the following state, the shutdown task was loaded into the batch queue and could not be processed/removed from the batch queue. This defect has been corrected.  1) In the LC-2030/2040 system: "Power Down" 2) In the systems with the system controller SCL-40/CBM-40/CBM-40lite: "Sleep" and "Power Down"  If the system is already in these states (Shutdown State), any subsequent registered shutdown is not processed and terminates immediately. Once the system is waked up ("Instrument On" or "Activate On"), it can be shutdown again.	
		R142346	On the systems using SCL-40/CBM-40/CBM-40lite system controllers, there were cases that the registered shutdown may not be performed at the end of the analysis. This bug sometimes occurred after the analysis where the LC Stop Time was longer than the data acquisition time.  Similarly, on the systems using SIL-30AC or SIL-40 series, there was a problem that the registered shutdown did not execute at the end of analysis when the rinse setting was "Internal&external"(Rinse type) and "After Analysis"(Rinsing start time). This defect has been also fixed.	
		R134241	On the Shutdown Setting window, the check box for [Degassing unit Off] was not linked correctly with other check boxes and unintentionally became uneditable.	
	CMD Setting	R143005	The values of [pH Upper Limit] and [pH Lower Limit] could be entered on the CMD Information setting window. (These items cannot be set for CMD, so input is disabled in this version.)	This defect occurs in version 6.87 and later.
	Method Editor	R140611	On the systems using SCL-40/CBM-40/CBM-40lite system controllers, the Fraction Collector Time Program for FRC-10A could not be saved on the instrument parameter setting.	This defect occurs in version 6.89 and later.
		R141985	On the systems using SCL-40/CBM-40/CBM-40lite system controllers, the pump flow for LC-20ADXR could not be set on the instrument parameter setting.	This defect occurs in version 6.92.

#	Category	No.	Description	Remarks
		R143373	The upper limit of the value which can be input to the "Sample discharge speed" and "Air gap volume" of SIL-40 series in the instrument parameter setting was smaller than the specification.	This defect occurs in version 6.92.
	Report	R140897	When using multiple GPC report items ("GPC Overlay" and "GPC Summary") with the setting "Fix file(s) in the item" checked, the LabSolutions terminated with an application error when the specified data did not exist. This version has been fixed to not force termination.	
GC				
	System Configuration	R111297	GC instrument configuration could not be updated when AOC-5000 or AOC-6000 was connected to the GC.	
	Method Editor	R136613	The Method parameter "Split ratio program" could not be set for GC-2010, GC-2014 and GC-2025.	This defect occurs in version 6.86 and later.
	Control Panel	R137431	For GC-2010, GC-2014, GC-2025 and GC-2018, when [Method Editor] window from Control Panel was displayed, the "Link Oven Program edit and Acquisition Time" checkbox was always off. This has been fixed to keep the previous setting in this version.	
	Calibration Curve	R140157	When Dual-line GC method files in which "# of Calib. Levels" was set over "10" were loaded on the Calibration Curve window, application errors occurred.	

#### 4.32 Version 6.103 Corrected Defects List

#	Category	No.	Description	Remarks
Common				
	General	R93613	Fixed a bug that Restore from read-only media failed.	
		R94175	Fix a bug that prevented LabSolutions from logging in when a windows user account name contained ' (single quote mark).	
		R93746	Fixed a bug that PC information with duplicate physical address was not registered.	
		R100946	The database for LabSolutions could not be created when the password of the Microsoft SQL Server administrator user contained spaces or symbols.	
		R123649	Fixed a bug where large amounts of PC disk space would be used if the system was corrupted.	
		R129245	Fixed a bug that caused an error when editing a Rights of a user who has a user name of 32 characters or more in a Windows domain, in the system which use domain reference function. As a result of this modification, the user name for LabSolutions is: Users with 1 ~ 31 character user names in Windows domains : User names in Windows domains Other users :Windows logon name	

#	Category	No.	Description	Remarks
	Installer	R154061	In an environment using Microsoft SQL Server 2016 or later for a database, if a specific table in the database was missing, "LabSolutions Version Upgrade Tool" data migration process, which was originally unnecessary, was executed when upgrading, and as a result the upgrade failed.	
	Security Policy	R118661	Fixed a bug that the security policy item "Prohibit local login on failure" remained in security policy report even though it has been removed.	
	Project Administration	R137120	Fixed a bug that audit trail was displayed even though nothing was changed in the project administration.	This defect occurs in version 6.72 and later.
	Audit Trail Log	R109684	Fixed a bug that "Audit Trail Log Input reason" window was not displayed when [Input reason for changes user administration] was enabled and a new user was created.	
	Data Manager	R41497	Fixed a bug that sometimes caused unlinking failure.	
		R99280	Fixed a bug that signature information might not be written in the PDF file when signing.	
		R107546	Fixed a bug that failed when signing multiple files at once.	
		R113958	Fixed a bug that caused unnecessary lines to appear when zooming in on a report in PDF format.	
		R117008	Fixed a bug that could not be searched when a data file with control characters in the sample information was registered.	
		R144134	Fixed a bug that [Signature] function and [Confirm Result File] function could not be used in the Data Manager for data files created using a report format file containing both the [Signature] and the [Confirmation form] report items.	This defect occurs in version 6.87 and later.
	Column Manager	R122993	When a user group containing a user with the [Read Project Name] right was assigned to a project, Column Manager did not display the correct project-related information. The problematic information was the project name and sample name in the analysis history, and the instrument belonging to the project that appears in the instrument tree view.	
	Report Set	R91791	The message displayed when there was no report set output was modified.	
	Log Browser	R78000	Depending on the environment, the audit trail log was not recorded in the Log Browser.	
		R138331	Fixed a bug that users without the [Register Manual Log] rights could manually register logs.	
	Batch Analysis	R119507	Security Policy Settings (Project) - [System] tab - For projects with the "Only use method, batch, and report formats files from the database" setting set to ON, if a failure occurred between the LabSolutions server and the acquisition controller during batch analysis and the failure was recovered during the analysis of the next line, there was a case that the analysis might be aborted with recording the log "This file is in use by another application."	

#	Category	No.	Description	Remarks
	Data Explorer	R100513	Fixed a bug that caused "Get the file from database" to fail when importing a file with the same name but different double-byte and one-byte characters.	
	Report	R144133	Fixed a bug that single analysis/batch analysis/batch postrun with a report format file containing a [Signature] report item resulted in a "The file does not exist" error and the data file was not registered.	This defect occurs in version 6.87 and later.
	System Restore	R85146	Backup files backed up by 32 bit OS can be restored to 64 bit PC from this version. (LabSolutions database paths must match on both PCs to perform a backup & restore.)	
	PDF Output	R73887	When upgrading Windows 10 or later, PDF output didn't work	
		R94172	Fixed a bug that could prevent a report from being output in PDF format.	
	LIMS Connecting Option	R116003	Fixed a bug that the data which had been failed to acquire a lock did not stop being transferred to LIMS.	
	Multi Data Report	R137950	Fixed a bug that caused the Multi Data Report Template Editor to terminate unexpectedly when setting a long expression before the "DATAINFO" function.	
	Multi Data Register	R121708	Fixed a bug that prevented the file from registering if the specified data file did not exist in the replacement data file (Item Name : Data File) for map information and you disabled error checking for the replacement data file.	
		R123911	Fixed a bug that an error message "Unknown error" was displayed when parsing was failed for Operation Date of "Public Text Format" file.	
LC				
	Analysis	R148958	On the systems using SCL-40/CBM-40/CBM-40lite system controllers, when SIL-10A series were used with the pretreatment mode other than "Standard", analysis did not start. Along with the fix for LabSolutions, the system controller's ROM has also been fixed. Use the SCL-40/CBM-40/CBM-40lite system controller in ROM version 1.43 or later.	
		R142800	In the suppressor system consisting of the SCL-10Avp/sp(system controller) and the CDD-10Avp/sp(detector), when automatic switching was performed according to the suppressor cartridge switching cycle after data acquisition, there was a case that the cartridge was switched again before the next analysis, and as the result, the next analysis was performed using the same cartridge as the previous analysis.	
		R144899	Resolved an issue that caused LabSolutions to repeatedly report a fatal error on an LC instrument. At this time, the status display on the Data Analysis window is displayed as "Fatal Error" from this version.	
		R152885	On the Analysis window, when "Download instrument parameters" was executed with the "Deconvolution" setting turned on in the multi-chromatogram setting for the PDA detector, the Analysis window was terminated with an application error.	

#	Category	No.	Description	Remarks
		R155502	LabSolutions could not run analysis on systems containing SPD-30AM.	This defect occurs in version 6.87 and later.
	CMD	R142632	In the systems using CMD, if multiple lines of information were entered in the comments of CMD (With line breaks), even if [CMD Import] was performed in the method or system configuration, the status of "CMD-Method Column Mismatch" was not cleared and could not start analysis.	
		R151342	Corrected an error handling on the CMD information window when CMD is not attached to the system. When an operation to write CMD information was performed while CMD was not attached, only the information in LabSolutions was updated and the information in CMD was not updated, resulting in an inconsistency.	
	Method Editor	R145224	In the method editor for SIL-40 series, the button for displaying [Pretreatment program] sometimes disappeared when the window size was changed.	
		R151568	On the SFC systems using SCL-40/CBM-40/CBM-40lite system controllers, when time program commands to change BPR pressure were set in the [Time Program] in the instrument parameter and then the "Display pump gradient program" checkbox was set to On/Off, the BRP pressure value of the time program changed unintentionally.	
	Postrun	R123145	An application error might occur when performing integration processing using "L.Slope" in the integration time program.	
		R147007	In the peak integration, the area value of the last peak became abnormal when the leading peak was deleted by manual integration or when the rising baseline was processed by the "L.Slope" command.	
		R151277	When manual integration command "Reject Peaks" was executed on chromatogram data with a series of tailing peaks, there was a case that the postrun window closed with an application error.	
	Quant Browser	R45472	When the processing target was LC data, [View] - [Chromatogram View] of the menu displayed invalid menu names (Peaks for 1-3 Data files).	
		R63622	Fixed a bug that caused the files to be saved even when "Cancel" was selected on the "Audit Trail Log - Reason" window before saving on the Quant Browser window when the reason input function for audit trail was enabled.	
		R144157	Fixed a bug that caused the data files to be saved when saving the method file on the Quant Browser window by a user who does not have the [Perform Postrun Analysis] right but has the [Edit Method] right.	
		R144590	Under the condition that you were using files with its Audit Trail enabled, when saving a browsing file with a name on the Quant Browser window and then selecting the [Cancel] on the "Audit Trail Log - Reason" window, an empty browsing file was created.	

#	Category	No.	Description	Remarks
	GPC Data Analysis	R149543	When [Pick up] button was performed for multiple data files on the GPC Calibration Curve, the GPC Postrun window was terminated with an application error.	
	Report	R134950	When the spectrum index was printed from the PDA Data Analysis window, even when there were multiple spectrum data (multiple peaks were detected), only 1 page was printed.	
		R148246	In the SIL-40 dual injection system, when the version of LabSolutions was upgraded to version 5.99 or higher, the dual injection related information of the system configuration and method parameters were not correctly displayed on the LabSolutions.	This defect occurs in version 6.92 and later.
	File Conversion	R147431	When data with no peaks detected was converted(exported) to an AIA file, the information in the cdf file was missing. As the result, the cdf file could not be read by LabSolutions and other software.	
<b>GC</b>				
	System Configuration	R143154	Realtime Analysis window ended incorrectly when AFT configuration parameters were set.	This defect occurs in version 6.92 and later.
	Method Editor	R143890	Fixed a problem that the same error message was displayed twice on the method editor for GC-2010.	
	Report	R133137	Fixed an issue that AFT Ready check parameters were not displayed in the method report.	
		R143518	In the system configuration report for GC-2010, the "Max Usable Temp" of column was not displayed under the decimal place.	
<b>Agilent / Thermo – LC / GC Common</b>				
	Download	R114290	Fixed a bug when downloading a method file while the device security policy "Save method file when downloading device parameters" was enabled would update the modification date and time even if the method is not modified. If in database mode and method files are versioning, the update date and version number had been increased.	
	Report Set	R140868	Fixed a bug that caused an incorrect report set to be generated by logging in again during batch analysis in Agilent-LC/GC and Thermo LC/GC and restarting the analysis application.	This defect occurs in version 6.88 and later.
<b>Agilent – LC / GC</b>				
	Analysis	R129479	Fixed a bug that caused [Injection Volume] to display an error and not be editable when [Use method volume] was enabled when using Agilent 7697 A.	This defect occurs in version 6.81 and later.
		R136360	Fixed a bug that could cause the application to crash when saving a batch file created with an older version.	
		R142367	When controlling Agilent GC, downloading a method with a pressure value while the valve is closed sometimes caused an exception.	
<b>Thermo – LC / GC</b>				
	Analysis	R144909	Fixed a bug that batch analysis was stopped in the second line when batch analysis was performed in Thermo HS.	This defect occurs in version 6.84 and later.

### 4.33 Version 6.106 Corrected Defects List

#	Category	No.	Description	Remarks
Common				
	General	R150166	Fixed a bug that prevented the audit trail from recording correctly when changing user information for a domain in an environment using the domain reference feature.	
	Column Manager	R122437	Fixed the problem that the application would stop when the column is registered or edited in the Column Manager when the Windows date format is other than YYYY/MM/DD.	This defect occurs in version 6.87 and later.
	Audit Trail	R125411	When the versioned data file was saved in the Postrun Analysis window, the audit trail for the previous version was recorded.	
	Postrun	R70086	When saving the format file after loading it on the data report window, the data report sometimes became blank.	
		R127524	Sometimes the theoretical plate (USP) value was not displayed correctly on summary report with data files with different detector configurations (PDA, LC, etc.), or with different column performance calculation methods.	
	Summary Report	R75462	The report type displayed at the upper left of a summary report was incorrect. If "Output report type in header" item of instrument Tab of Security Policy Settings was enabled and you started postrun a batch of which Summary Type was set as any excluding "None", the report type of resulting summary report should be "Report (Postrun Batch)" but displayed as "Report (Report Editor)".	
	Report Set	R149171	Fixed a bug that caused the Data Manager to display an exception when printing sample information or force itself to exit during report set creation when using the print format for sample information created in projects with version tracking enabled in projects with version tracking disabled.	
	System Backup/System Restore	R148063	The configuration file can now change the temporary space on the hard disk used during System Backup and System Restore.	
	Data Explorer	R152042	Data files that are locked or open elsewhere will fail if you try to [Restore as Last] them in the Data Explorer. The error message and help contents were not appropriate, so I fixed it.	
	Security Policy	R157993	Fixed a bug that the "Prohibit change of user name" policy that was not printed on the security policy report.	This defect occurs in version 6.103 or later.
LC				
	Analysis	R157481	When attempting to start analysis on the LC-2010 series from LabSolutions, the status remained "Ready" and the analysis was not started.	This defect occurs in version 6.101 and later.
GC				
	System Configuration	R146285	Fixed a problem that if two carrier gas controllers CAR (DAFC) were installed in the GC-2030, the second one could not be recognized.	

#	Category	No.	Description	Remarks
	System Check	R149175	Fixed a bug that CON and SAT were not displayed in the temperature sensor usage time / temperature sensor check items when the system check with the CAGC-100 device.	
	Control Panel	R150367	In the case of GC-2014 to which DINJ is connected, the problem that the column method edit screen is not displayed even if the column icon on the control panel is clicked has been fixed.	
	Analysis	R143628	Fixed a problem that an incorrect error log was recorded when "Acquisition Start from Instrument" is performed in the 2 line GC without a detector on the second line.	
		R144243	Fixed a problem that control values could be changed on the control panel and monitor screen during analysis.	
		R144263	Fixed to stop the analysis when "Acquisition Start from Instrument" is executed while the method is open as read-only.	
		R146334	Fixed a bug that [Check Trap Colling Ready] was changed even when the loop mode was selected on the method edit screen.	
		R147150	Fixed a problem that WBI/OCl/CAR (DIR) primary pressure was not downloaded to the GC-2030 .	
		R147393	Fixed a problem that column information could be changed on the method editor during analysis.	
		R147637	Fixed a problem that an unintended method was applied when GC system was turned on if [Load File] was set to a value other than "FILE0" on the [GC Start Sequence] screen of the GC-2030.	

#### 4.34 Version 6.106 SP1 Corrected Defects List

#	Category	No.	Description	Remarks
GC				
	Analysis	R161964	Fixed a problem that "Command is invalid" error is displayed when GC-2010 Ver.1.XXXX or GC-2014 Ver.1.XXXX is connected.	This defect occurs in version 6.106.

#### 4.35 Version 6.110 Corrected Defects List

#	Category	No.	Description	Remarks
Common				
	General	R80495	Fixed a bug that when any user account in Activate Directory differs from an existed LabSolutions account by only letter case (upper-case / lower-case) of its username, the LSS Service will not be able to start.	This defect occurs in version 6.81 and later.
		R145257	Fixed a bug that PC information would not display the database version.	
	Postrun	R147282	Fixed a bug that when a command was deleted with the [Delete] key on the table of the Manual Integration bar, "Reject Peak" was sometimes added to the table.	

#	Category	No.	Description	Remarks
		R150646	Fixed a bug that when [Select Folder] was selected while the Manual Integration bar was displayed, both the [Select Folder] screen and [Chromatogram View] might move up and down according to the up and down movement of the mouse scroll wheel.	
		R162918	Fixed a bug that an error might be displayed on the [Noise/Drift Calculation Settings] screen when the setting values of "Time Width of Specified Range" and "Interval" of ASTM noise are equal.	
		R166156	Fixed a bug that saturated chromatogram color settings were not applied when the data file was opened. The initial value in the past version was blue, but the initial value and the saved setting value will be changed to red when the version is upgraded.	
	Data Browser	R149898	Fixed a bug that when a data file was saved or closed, the modified file might not be saved depending on the layout.	
	Column Manager	R152962	When the [decimal symbol] of [Region and Language] settings in the Windows Control Panel was set to comma (such as German), column information was not saved from Column Manager.	
		R153854	Fixed a bug that the analysis history was not displayed correctly on the Column Manager when performing analysis on a system where the decimal point display setting of Windows is a comma.	
	Backup	R149248	Fixed a bug that the backup failed due to logs registered when the system was corrupted.	This defect occurs in version 6.86 and later.
		R161921	Added processing when a backup encounters a write error due to a defective removable media.	
	Multi Data Register	R126436	Fixed a bug that the PDF does not automatically adjust to printer paper when printing PDF from Multi Data Register.	
		R142394	Fixed a bug that the data number was not added to the PDF for signature when a PDF for signature was specified other than the result file 1 in the map editor.	
		R143218	Fixed a bug that the data No. cannot be added to the correct position of the signature PDF depending on the imported PDF.	
		R103154	Fixed a bug that the template file could not be created when using Excel version of Multi Data Report even though Excel was installed in some environments.	
		R110206	Fixed a bug that the data imported by Multi Data Registration cannot be used in the Excel version Multi Data Report.	
		R159477	Fixed a bug that the template file cannot be created when the name of Data Processing Type is 32 characters or more when creating a new Excel version Multi Data Report template. After this fix, it will be written as Lss UV-Vis and MIDR on the Excel sheet respectively.	This issue occurred when the data processing type was LabSolutions UV-Vis or MultiDataRegister.
	Check Data / Report	R156828	Corrected the report format for the OQ function check report where characters were truncated around the project name/method name.	

#	Category	No.	Description	Remarks
	System Backup / System Restore	R125010	Fixed a bug that could cause system backup and system restore to fail if the folder path specified by system backup and system restore contains Japanese.	
	Installer	R132716	The following files are no longer removed during uninstallation. Also, the files will not be overwritten if they already exist during installation. LSSystemBackupConfiguration.xml (System Backup Configuration File) LSSystemRestoreConfiguration.xml (System Restore Configuration File)	
LC				
	Analysis	R164358	In the system using ELSD-LT III, when the ELSD status is "Ready" and the analysis is performed by the method satisfying the following conditions, the analysis starts without waiting for the drift tube temperature to stabilize. <ul style="list-style-type: none"> <li>· "Temperature ready check" is checked.</li> <li>· The drift tube temperature is set to a value different from the value of the "Drift tube temperature (ELSD)" status in "Instrument monitor".</li> </ul>	If the ELSD state is already "Wait Drift Tube Temperature", this issue does not occur.  This defect occurs in version 6.101 and later.
	Batch Analysis	R163594	Fixed a bug that when using the LC-20A series pump in LPGE mode, an error may occur on the Confirm mobile phase usage volume.	
	Data Acquisition	R155799	Fixed a problem in which data acquisition could not be performed depending on the value of the dilution ratio when using the "Dilution" mode in preprocessing using SIL-40.	This defect occurs in version 6.87 and later.
	Method Editor	R155881	On the instrument parameter setting (Pretreatment program) for SIL-40 series, "0" was not accepted at the 1st argument for "disp" command.	This defect occurs in version 6.87 and later.
	PDA Data Analysis	R123470	Fixed a problem in which similarity calculation and export of spectrum did not work for rows where the target of the spectrum table was set to a data file.	
		R154628	When using the Total Peak Purity method, the peaks displayed in the PDA Purity View could rise to the right. After fixing the bug, the purity judgment result may rarely change from "Impurity Detected" to "Impurity Not Detected".	This fix does not change the "Impurity Not Detected" judgment to "Impurity Detected".
	GPC Data Analysis	R161321	Fixed a bug in GPC data analysis that allowed users without "Perform Postrun Analysis" right to update data files.	
	Data Browser	R166254	Fixed a bug in which the PDA chromatogram cell was not displayed as configured when loading data.	
	Report	R164539	Fixed a bug in the UV spectrum report item that caused gaps at both ends of the graph when the spectrum is zoomed in.	
		R170180	Fixed a bug that the device parameter report was not included in the method report output by the batch files LC_OQ_Dilution2.lcb and LC_OQ_Dilution2_SignatureSpaceON.lcb for checking the OQ function.	This defect occurs in version 6.80 and later.

#	Category	No.	Description	Remarks
	GPC Report	R137372	Fixed a bug that in the [GPC Overwrite] / [GPC Graph] report item, the Postrun window was closed when reading a data file in which the noise data of the noise calculation parameter was set to "Background Data".	
		R137936	Fixed a bug that when [Fix Detector Ch No.] of the [GPC Summary] report item was enabled, the correct detector number might not be assigned.	
	AutoPurge	R158875	On systems using LC-2050/2060, if you clicked AutoPurge button with the conditions that did not have any purge setting, the message "You cannot close the window during AutoPurge" appeared and could not close the analysis window. It has been corrected so that if there is no purge setting, it is not processed when the AutoPurge button is clicked.	This defect occurs in version 6.103 and later.
	Instrument Monitor/Control Panel	R161155	The following defects have been fixed on the LabSolutions control panel when using the LC-2050/2060 system. <ul style="list-style-type: none"> <li>Flow path animation did not work on the control panel display.</li> <li>Even if the user has the right to "Edit Method (Pump Flow)" and "Change Monitor Parameters", the check box for "Apply to Method" could not be set from the pump flow rate setting on the control panel.</li> </ul>	This defect occurs in version 6.103 and later.
GC				
	Analysis	R157965	GC Realtime Analysis window may be closed during GC analysis.	
		R163070	Fixed a bug that analysis could be started if the vial number was set to 0 when using HS-10.	
		R168881	Fixed an issue that immediately proceed to the next batch line when an error from AOC-20 that is connected to a GC other than GC-2030 occurs during batch analysis.	This defect occurs in version 6.106 or later.
	Postrun	R165087	When using GC-2030, fixed the bug that the [Column flow rate] and [Linear velocity] titles are not displayed in the status log data when outputting ASCII.	
	Method Editor	R169022	Fixed an issue that Carrier gas flow calculation is incorrect when Instrument Parameters View mode is changed to [Advanced] after column is changed in [Normal] mode.	GC-2010/GC-2014/GC-2025
	Data Browser	R84543	Fixed a bug where some GCsolution data files could not be loaded into LabSolutions.	
	Log Browser	R158734	Fixed a bug that the application name of the log browser is written as "Realtime Analysis" regardless of the language when using the GC-2030 device.	
	System Configuration	R106556	Fixed a problem that the APC port may not appear as an additional flow in the System Configuration window, although the AuxAPC assigned to AFT unassign on GC-2030.	
	Report	R162541	Fixed a bug that the unit of pressurize gas pressure in the method report is not written as set when using the GC-2030 device.	

#	Category	No.	Description	Remarks
	File Conversion	R165565	Fixed a bug that failed to read data files and method files in the following formats. <ul style="list-style-type: none"> <li>• CLASS-GC10 Data File</li> <li>• CLASS-VP4 GC Data File</li> <li>• CHROMATOPAC Data File</li> <li>• CLASS-GC10 Method File</li> <li>• CLASS-VP4 GC Method File</li> <li>• CHROMATOPAC Method File</li> </ul>	This defect occurs in version 6.106.
	Quant Browser	R165491	Fixed a bug that line 1 data could not be read when reading a batch file with dual line analysis into a quantitative browser.	This defect occurs in version 6.89 and later.
	Startup / Shutdown	R168196	Fixed a bug that the software froze when shutdown the GC-2030 after executing a batch that met the following conditions. <ul style="list-style-type: none"> <li>• Batch of GC-2030 that executes the shutdown created by Version .6.89 or lower</li> <li>• Batch of GC-2030 to execute the shutdown created by Batch Wizard</li> </ul>	This defect occurs in version 6.92 and later.
Agilent-LC/GC				
	Analysis	R156739	Fixed a bug where if the instrument configuration changed, the analysis application would not incorporate the change and the instrument control would become unstable.	
		R158616	Fixed a bug where collecting data using an old method file or a method file on another device might not record the correct configuration in the data file.	
Agilent-LC/GC, Thermo-LC/GC				
	Analysis	R146945	Fixed a bug that prevented analysis apps on Agilent or Thermo devices from launching if the size of text or other items in the OS's display settings was changed to something other than the default (100%) in Windows 7.	This defect occurs in version 6.84 and later.

- Adobe, Acrobat and Reader are either registered trademarks or trademarks of Adobe Systems Incorporated in the United States and/or other countries.
- Windows is the registered trademark of Microsoft Corporation USA, (USA) and in all other countries.
- All brand names and product names are trademarks or registered trademarks of their respective companies.