

# Prominence-i / Nexera-i Interactive Communication Mode(ICM)

*Prominence-i/Nexera-i enable you all the series of operation with the instrument's panel, from changing the instrument parameters to adding sample analysis into the LabSolutions. This guide introduces you the procedure to use this new function (ICM).*

## Uploading sample analysis with instrument's panel

1. On the LabSolutions, create a base method file to be used for analysis.
  2. On the LabSolutions, specify the "Start Acquisition" settings.
  3. Change instrument parameters with the instrument's panel.
  4. Upload sample analysis with the instrument's panel.
- ⇒ The instrument's parameters are uploaded onto the LabSolutions base method file and batch analysis starts on the LabSolutions.

### 1. On the LabSolutions, create a base method file.

On the method editor (instrument parameters), specify each detector's acquisition time, LC stop time and pump flow etc. then save it as a base method file.

#### \*Notice\*

Acquisition time for each detector cannot be changed with the instrument's panel. Specify it in advance on the LabSolutions base method.

#### Parameters editable and to be uploaded

Pump : Gradient mode (ISO/LPGE), Flow, Port, B~D.Conc

Autosampler : Sample cooler temperature

Oven : Oven temperature, Temperature limit, Valve position

UV detector : Wavelength Ch1, Ch2

Time program : all the time program<sup>(1)</sup>

(1)The Stop Time is not applied to the acquisition time of each detector.

\* Parameters of an external detector and option unit are also editable, refer to the instruction manual of each instrument.

## 2. On the LabSolutions, specify the "Start Acquisition" settings.

The screenshot shows the 'Setting Options' dialog box in the LabSolutions software. The 'Start Acquisition' tab is selected. Four numbered callouts provide instructions:

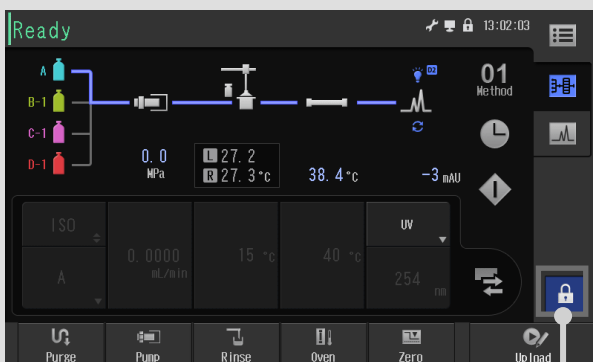
- 1** Show [Start Acquisition] tab
- 2** Tick the checkbox
- 3** Specify the base method to be used for analysis
- 4** Tick this check box to run analysis with the instrument parameters edited on the panel

The dialog box contains the following settings:

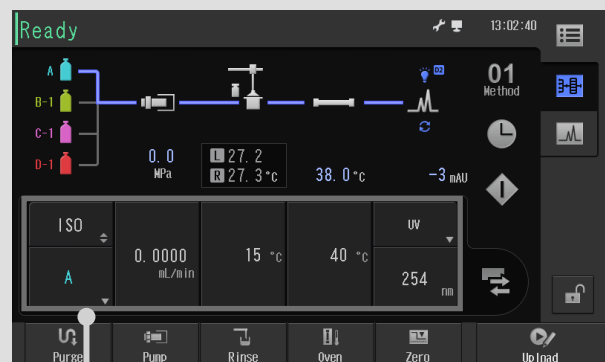
- Show the data acquisition start dialog for manual acquisition
- Acquisition Start from Instrument
- Data File Name: default.lcd
- Method File: UWTest.lcm
- Upload instrument parameters on the start of analysis

## 3. Change instrument parameters with the instrument's panel.

In advance, download the base method from the LabSolutions. Change the instrument parameters on the instrument's panel.



**1** Touch the "Unlock" icon

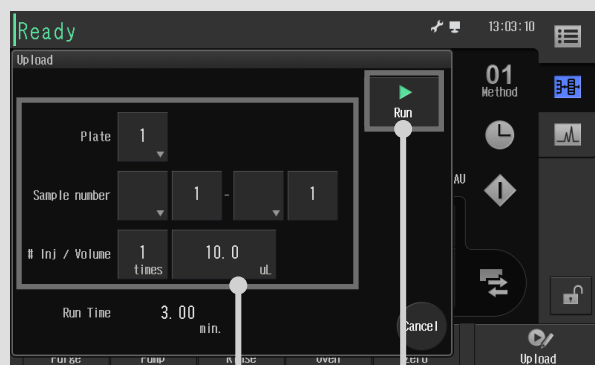


**2** Change instrument parameters on the panel

## 4. Upload sample analysis with the instrument's panel.



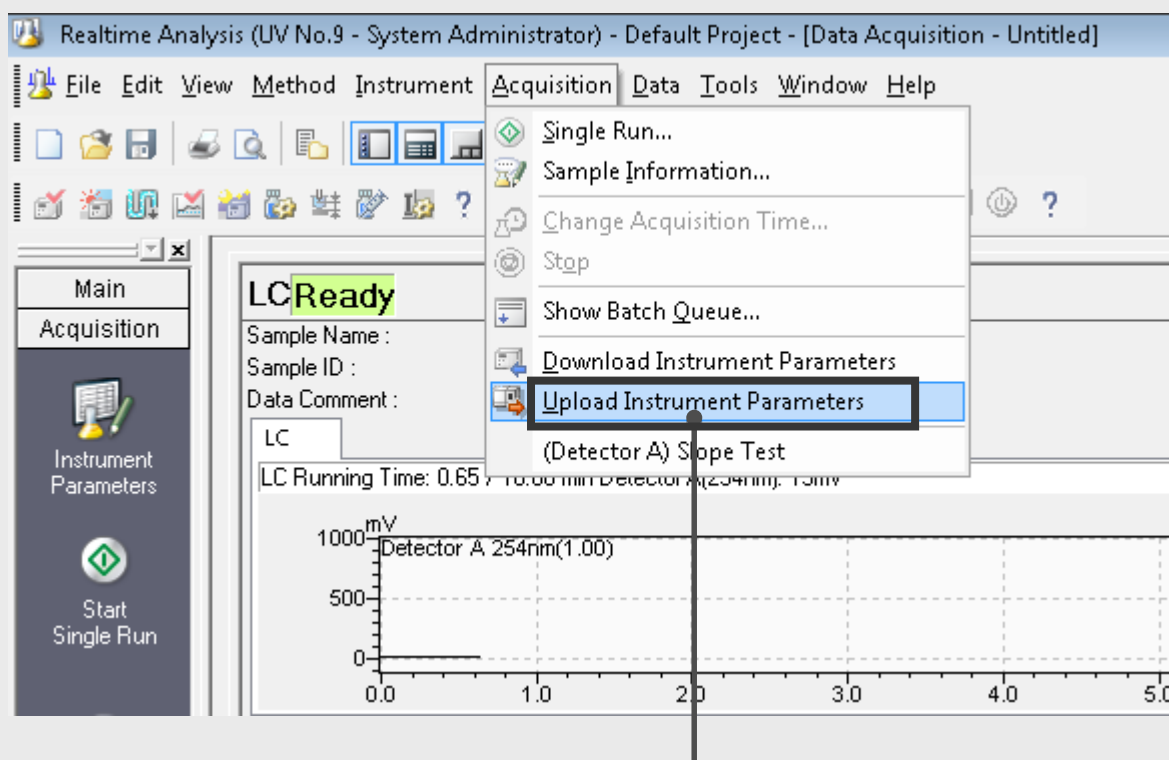
**1** Touch "Upload"



**2** Input Plate, Sample number, Injection times and volume, then touch "Run"

The instrument's parameters are uploaded onto the LabSolutions base method and batch analysis starts on the LabSolutions.

Instrument's parameters can be also uploaded on the LabSolutions.



[Acquisition] – [Upload Instrument Parameters]

## Frequently asked questions

### ● (Unlock) icon is not available on the instrument's panel...

⇒ It cannot be unlocked on the panel during analysis.

It can be unlocked with the LabSolutions "Controller Unlock" button during analysis, however in this case, the edited parameters on the instrument's panel are applied only to the current analysis.

### ● is not available...

⇒ This function is not available when the setting on the LabSolutions is not specified in the checkbox of "Acquisition Start from Instrument", on the [Start Acquisition] tab in the option settings.

In addition, this function is not available for the LabSolutions users without "Run Batch Data Acquisition" right.

### ● The "Upload Instrument Parameters" menu is not available...

⇒ Method uploading function is not available during analysis.

For the LabSolutions users without "Edit Method (Instrument Parameters)" right<sup>(1)</sup>, method uploading function is not available, and instrument's parameters are not uploaded on the analysis start with the panel.

### ● How to require password for Unlock and Analysis on the panel

⇒ The password requirements level can be specified on the instruments<sup>(2)</sup> for unlock, uploading analysis and the initial authentication of the instrument.

### ● Under the GxP regulations, operation on the instrument's panel is not acceptable...

⇒ It can be protected by setting "Prohibit editing parameters on instrument" in the LabSolutions security policy. With this security policy, any user cannot "unlock" both on the LabSolutions<sup>(3)</sup> and on the instrument's panel<sup>(3)</sup>.

⇒ By setting the "GxP mode"<sup>(4)</sup> in the instrument, "Unlock" and "Upload"(starting analysis with the panel) operations are all prohibited on the instrument's panel.

(1) The preset rights group of "Operator" does not have this right.

(2) [Maintenance] – [Calibration] – [System Adjustment] – [Password request to deactivate lock] on the instrument.

(3) Uploading analysis with the instrument's panel is available.

(4) GxP mode is set by field engineers on demand at the installation.