

Quick Guide for Connection of CBM-20A(lite) and SPD-M20A/ M30A/ 30AM

This guide describes how to connect the CBM-20A(lite) and the SPD-M20A/ M30A/ 30AM to the network and make the settings to enable control from PC.

Prepare LAN cable, a hub, and PC in order to make communication setting for CBM-20A(lite) and SPD-M20A/ M30A/ 30AM that are at the state of shipment.

Make the settings with the following procedure.

■ PC settings

IP address setting	. . .
Subnet mask setting	. . .

■ Internet Explorer setting

Amount of disk space to use	<input type="checkbox"/> done
Adding CBM-20A(lite) to local intranet zone	<input type="checkbox"/> done
Adding SPD-M20A to local intranet zone	<input type="checkbox"/> done
Adding SPD-M30A to local intranet zone	<input type="checkbox"/> done
Adding SPD-30AM to local intranet zone	<input type="checkbox"/> done
"Run ActiveX controls and plug-ins" setting	<input type="checkbox"/> done
"Script ActiveX controls marked safe for scripting" setting	<input type="checkbox"/> done
"Active scripting" setting	<input type="checkbox"/> done
"Access data sources across domains" setting	<input type="checkbox"/> done
"File download" setting	<input type="checkbox"/> done
Bypassing proxy server	<input type="checkbox"/> done (Only when using a proxy server)
"Display a notification about every script error" setting	<input type="checkbox"/> done
"Print background colors and images " setting	<input type="checkbox"/> done

■ CBM-20A(lite) and SPD-M20A/ M30A/ 30AM settings

Items	CBM-20A	SPD-M20A/SPD-M30A/SPD-30AM
IP address setting
Subnet mask setting
System name setting		
Group name setting		
Master Name setting		
Communication Mode setting	<input type="checkbox"/> LCsolution <input type="checkbox"/> CLASS-VP <input type="checkbox"/>	
Interface setting	<input type="checkbox"/> Ethernet <input type="checkbox"/> RS-232C <input type="checkbox"/> Opt-Link(PAC)	
Set time from PC clock	<input type="checkbox"/> done	
[With CBM-20Alite only] CBM LINK setting	<input type="checkbox"/> done	

*Procedure

- 1)Setting IP address for PC
- 2)Changing browser setting for PC
- 3)Setting IP address and group name of the CBM-20A(lite)
- 4)Setting IP address and master server of the SPD-M20A/ M30A/ 30AM.
- 5)Changing IP address of the PC when necessary

1 Setting IP Address for PC (For Windows XP)

* Please refer to P.7 when you use Windows Vista or Windows 7 and refer to P.9 when you use Windows 10.

This section describes how to change the IP address of PC. CBM-20A(lite) and SPD-M20A/ M30A/ 30AM have the following IP address and Subnet mask set at the time of shipment from the factory.

Table 1 Initial value of the instrument and the IP address

	IP address	Subnet mask
CBM-20A(lite)	192.168.200.99	255.255.255.0
SPD-M20A	192.168.200.98	255.255.255.0
SPD-M30A/30AM	192.168.200.98	255.255.255.0

■ Changing the IP address

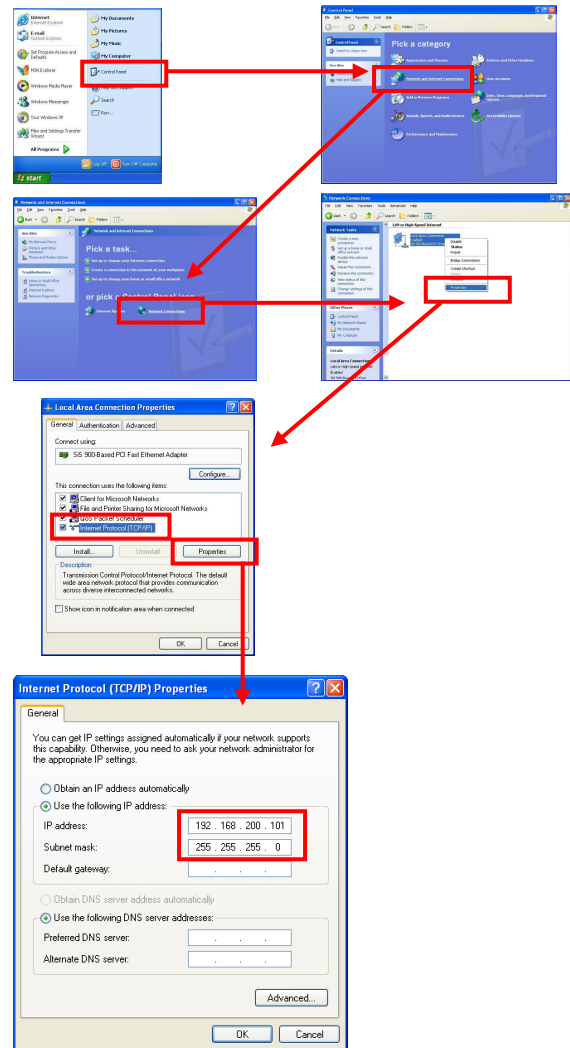
- 1) Open Control Panel from Start.
- 2) From Control Panel, display the Property of Local Area Connection Properties window with a series of operation below:
 - Click on Network and Internet Connections in Control Panel.
 - In the Network and Internet Connections window, click on Network Connections.
 - In the Network Connections window, right click on the Local Area Connection to display the pop up menu, and then click on Properties button.
- 3) In the Local Area Connection Properties dialog box, select Internet Protocol (TCP/IP) and click on the Properties button.
- 4) Set the IP address and Subnet mask.

If the factory setting of the CBM-20A(lite) and SPD-M20A/ M30A/ 30AM have not been changed, input the IP address and the subnet mask for the PC as show below.

Items	Set Values
IP address	192.168.200.101
Subnet mask	255.255.255.0

Click on the OK button after settings are made.

You may be requested to reboot the PC. In that case, follow the instruction and reboot your PC.



[Notice]

CBM-20A(lite) and SPD-M20A/ M30A/ 30AM shipped from the factory have IP addresses "192.168.200.99" and "192.168.200.98" in factory settings. When any PC in the existing LAN has one of these IP addresses, collision of IP address occurs, which prevents from configuring any parameters in CBM-20A(lite) or SPD-M20A/M30A/30AM. In such a case, connect them with the PC in a closed configuration (in isolation from the existing LAN), set their IP addresses, then connect them to the existing LAN. In addition, collision of IP address occurs when two or more CBM-20A(lite)/SPD-M20A/M30A/30AMs in factory settings are connected simultaneously. In this case, configure them one by one without connecting them to the LAN at once.

* The above explanation is given provided that the OS of your PC is Windows XP and Control Panel shows Category View.

* When you have changed CBM-20A(lite) and SPD-M20A/ M30A/ 30AM settings, if necessary, change the IP address and Subnet mask of PC to confirm that connection can be made.

2 Setting Internet Explorer for PC (For Windows XP)

* Please refer to P.8 when you use Windows Vista or Windows 7 and refer to P.10 when you use Windows 10.

Setting of the Amount of disk space to use (for IE7 or IE8, Disk space to use)

- 1) Click on the Settings button of the Temporary Internet files (for IE7 or IE8, Browsing history) in the General tab to display the setting dialog.
- 2) Set the Amount of disk space to use (for IE7 or IE8, Disk space to use) to "100" and click on the OK button.

■ Security setting (1)

- 1) Select [Local intranet] in the Security tab and click on the Sites button.
- 2) Click on the Advanced button.
- 3) Add URLs of CBM-20A(lite) and SPD-M20A/ M30A/ 30AM.
- 4) Input "http://192.168.200.*" and press the Add button. After input, click on the OK button to confirm the set contents.

■ Security setting (2)

Click on the Custom Level button in the Security tab. Set the following items from the setting list.

Items	Setting description
Run ActiveX control and plug-ins	"Enable"
Script ActiveX controls marked safe for scripting	"Enable"
Active scripting	"Enable"
Access data source across domains	"Enable" or "Prompt"
File download	"Enable"

You may be warned with a message saying "Are you sure you want to change the security setting for this zone?" Select Yes in that case.

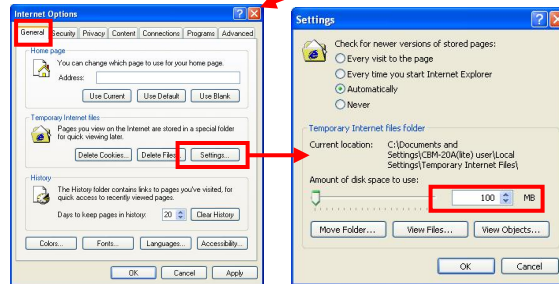
■ Bypassing proxy server

Click on the LAN settings button in the Connections tab. When using a proxy server in your LAN, configure the following settings. If no proxy server is used, this setting is not necessary.

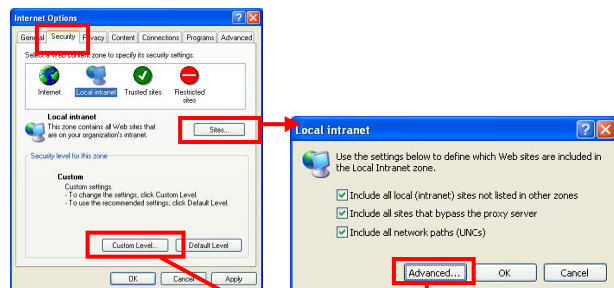
- 1) Check the "Bypass proxy server for local addresses" check box.
 - 1) Click the Advanced button and add the system controller's URL(192.168.200.*) in "Exceptions".



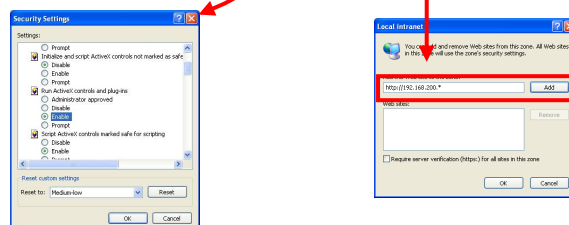
[Setting the disk capacity]



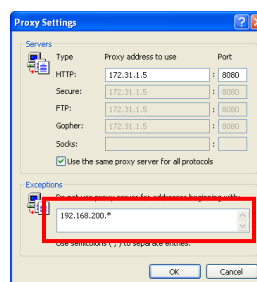
[Setting Security (1)]



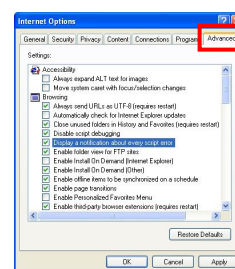
[Security Setting (2)]



[Bypassing proxy server]



[Advanced]



■ Advanced

- 1) Display the Advanced tab.
- 2) Browse to the checkbox "Display a notification about every script error" and select this option.
- 3) Browse to the checkbox "Print background colors and images" and select this option.

* When the IP addresses of the CBM-20A(lite) and SPD-M20A/ M30A/ 30AM are changed, change the Security setting(1) so that new IP addresses are included in the intranet zone.

3 Setting the CBM-20A(lite)

■ Setting IP address of CBM-20A(lite)

Connect to CBM-20A(lite) using Internet Explorer and change the IP address.

- 1) Start IE and input the URL of CBM-20A(lite).
Input "http://192.168.200.99" when newly installed.
- 2) Click on System Name on the Status page.
- 3) Login the Group_Setting window with the Administrator authority. When newly installed, input User ID: Admin and Password: Admin.
Click on Group Settings button. after inputting User Name and Password.
- 4) Set System Name and Group Name.
- 5) Set IP address and Subnet Mask.
- Clicking on the Advanced Settings button displays Advance Settings dialog box. The default gateway can be set.

■ Setting Communication Mode and interface

When shipped out from the factory, the Communication Mode is set to LCsolution and Interface is set to Ethernet. If used in the setting other than this, change the settings with the procedure below.

- 1) Connect with Internet Explorer, press System Name in the Status page of CBM-20A to login.
- 2) Click on System Controller.
- 3) In the Data Processing Setting System, set Communication Mode and Interface.

The following items can be selected.

Communication Mode : LCsolution, CLASS-VP, C-R8A etc.

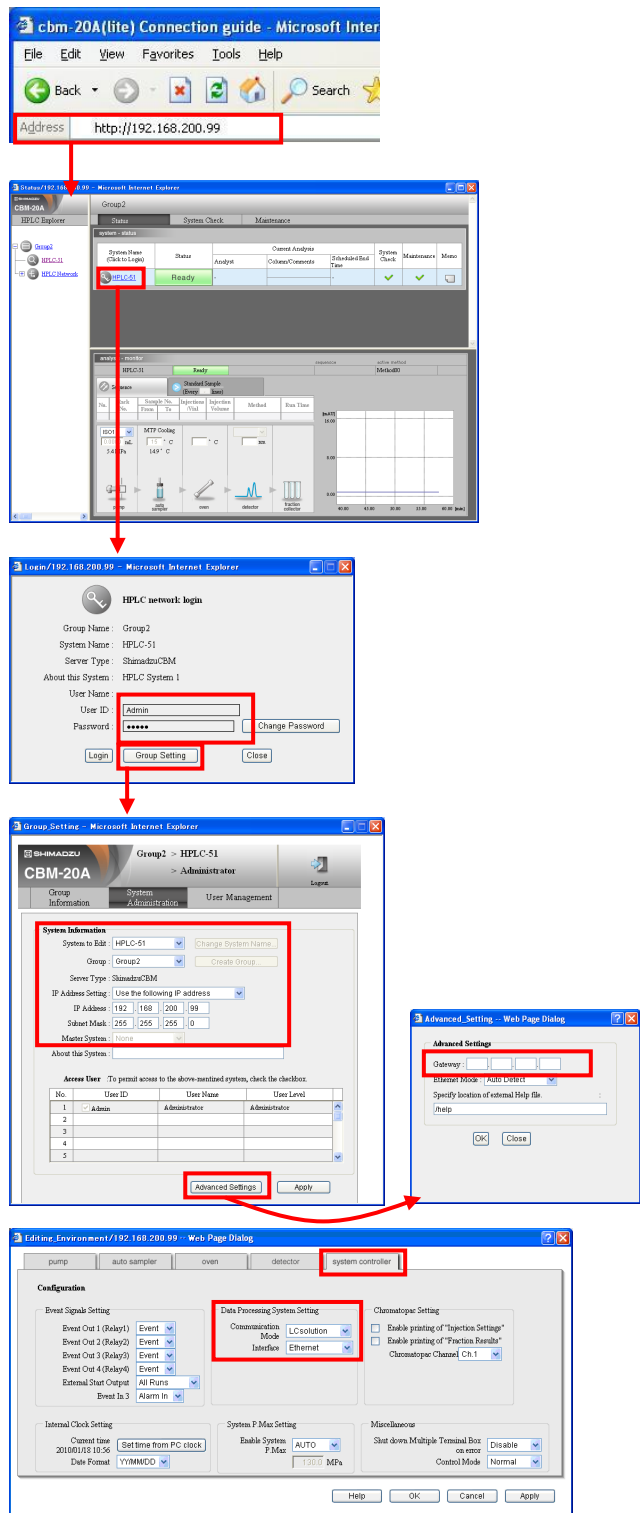
Interface: Ethernet, RS-232C, Opt-Link(PAC)

Setting of the IP address, communication mode, and interface become effective from the next time when CMB-20A(lite) starts up.

In addition to the above settings, perform the following operation.

- Set time from PC clock
Click on the Set time from PC clock button in the System Controller tab to set the time.
- Checking the case to use CBM-20Alite

In order to have CBM-20Alite link to the instrument to which CBM-20Alite is installed, it is necessary to set CBM LINK at LC to INT setting at system window on LC side. Address (5) will be automatically set as the link address.



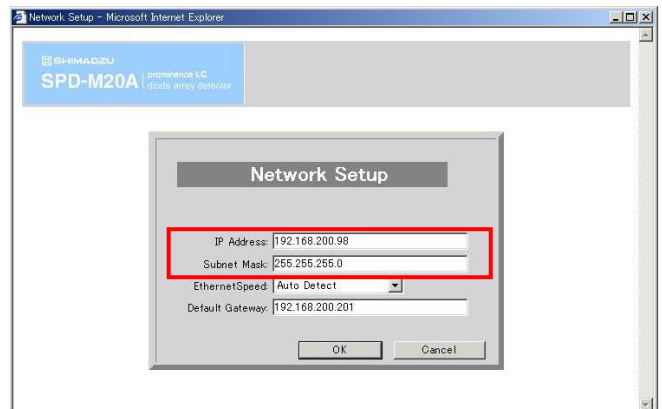
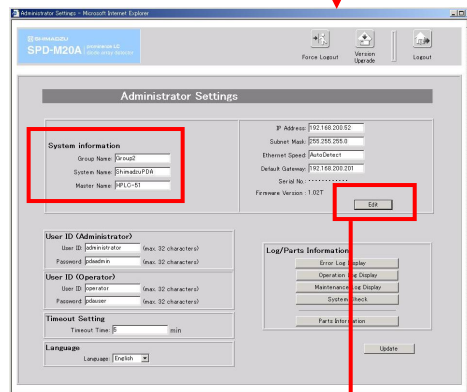
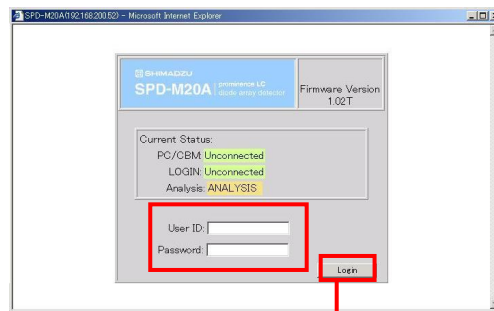
* If the following units are connected to CBM-20A(lite), it is possible to set IP address and Subnet mask directly from each unit. For details, see "3.1.2 Setting IP addresses" in Instruction Manual (Brief Manual) for CBM-20A/20Alite.
Pumps: LC-30A/20A series pumps (LC-30AD/20AD/20AT/20AB/20AP etc.), Auto sampler: SIL-30AC/20A/20AC etc., and Detector: SPD-20A/20AV and RF-20A/20Axs

4 Setting the SPD-M20A

■ Setting the IP address of SPD-M20A

Connect to SPD-M20A using Internet Explorer to change the IP address.

- 1) Open the setting screen from IE.
Input "http://192.168.200.98" when newly installed.
- 2) Log in as Administrator.
Input user ID and password, and press down the Login button. When newly installed, input User ID: administrator and Password: pdaadmin.
- 3) Change the IP address and Subnet mask
Click on the Edit button of the Administrator Setting window.
Input IP address and Subnet mask from the Network Setup window.
After input, click on the OK button.
- 4) Restart SPD-M20A.
The changed IP address becomes valid from the next time SPD-M20A starts up.



■ Setting Group name and Master name

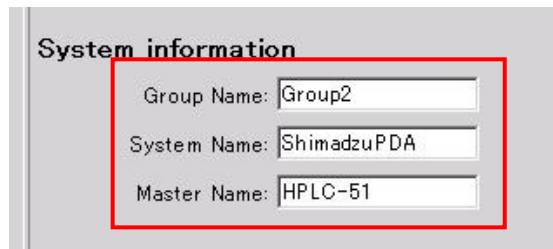
When starting analysis synchronously with the CBM-20A(lite), change the Group Name and Master Name.

Perform setting from the Administrator Setting window.

- Set the same Group Name as CBM.
- Set System name of CBM to the Master Name.

(Setting Example)

	Setting of CBM		Setting of SPD-M20A
Group Name	HPLC1	→	HPLC1
System Name	CBM1	↘	M20A1
Master Name			CBM1

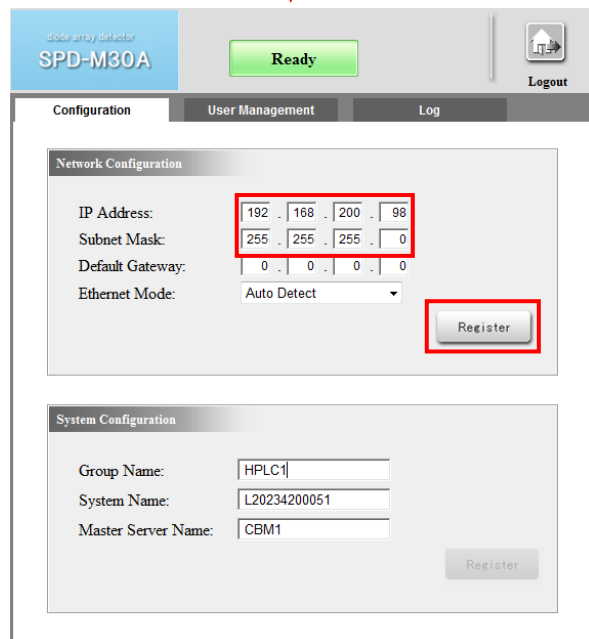
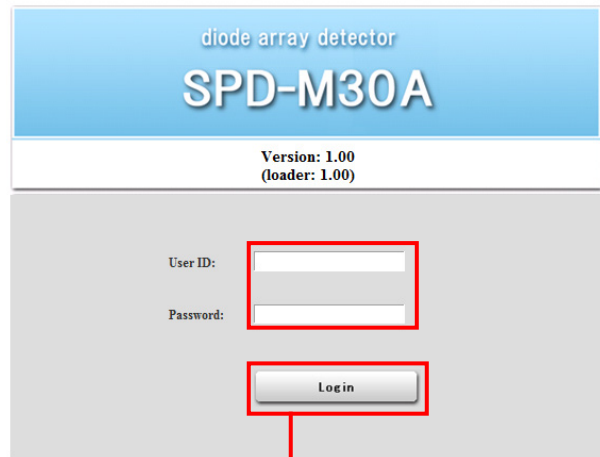


5 Setting the SPD-M30A/ 30AM

■ Setting the IP address of SPD-M30A/ 30AM

Connect to SPD-M30A/ 30AM using Internet Explorer to change the IP address.

- 1) Open the setting screen from IE.
Input "http://192.168.200.98" when newly installed.
 - 2) Log in as Administrator.
Input user ID and password, and press down the Login button. When newly installed, input User ID: Admin and Password: Admin.
 - 3) Change the IP address and Subnet mask
Input IP address and Subnet mask from the Configuration tab.
Click on the Register button.
- * Changing any field in network settings and clicking the [Register] button causes the settings on the instrument to be changed and the connection to be lost. In order to continue configuring settings other than the network settings, enter the newly set IP address into the web browser and log in again.



■ Setting Group name and Master name

When starting analysis synchronously with the CBM-20A(lite), change the Group Name and Master Name.

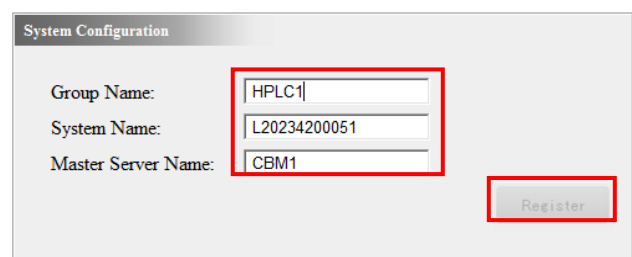
Perform setting from the Configuration tab.

- Set the same Group Name as CBM.
- Set System name of CBM to the Master Server Name.

Click on the Register button.

(Setting Example)

	Setting of CBM		Setting of SPD-M30A
Group Name	HPLC1	→	HPLC1
System Name	CBM1	↘	M30A1
Master Name			CBM1



- * It is possible to set IP address, Subnet mask, Group name and Master name from the utility software. For details, see "5.3.9 Configuring Network Setting (SPD-M30A Utility)" in "Nexera SPD-M30A HELP". In the case of SPD-30AM, see "5.3.9 Configuring Network Setting (SPD-30AM Utility)" in "Nexera SPD-30AM HELP".

1 Setting IP Address for PC (For Windows Vista and Windows 7)

This section describes how to change the IP address of PC. CBM-20A(lite) and SPD-M20A/ M30A/ 30AM have the following IP address and Subnet mask set at the time of shipment from the factory.

Table 1 Initial value of the instrument and the IP address

	IP address	Subnet mask
CBM-20A(lite)	192.168.200.99	255.255.255.0
SPD-M20A	192.168.200.98	255.255.255.0
SPD-M30A/30AM	192.168.200.98	255.255.255.0

■ Changing the IP address

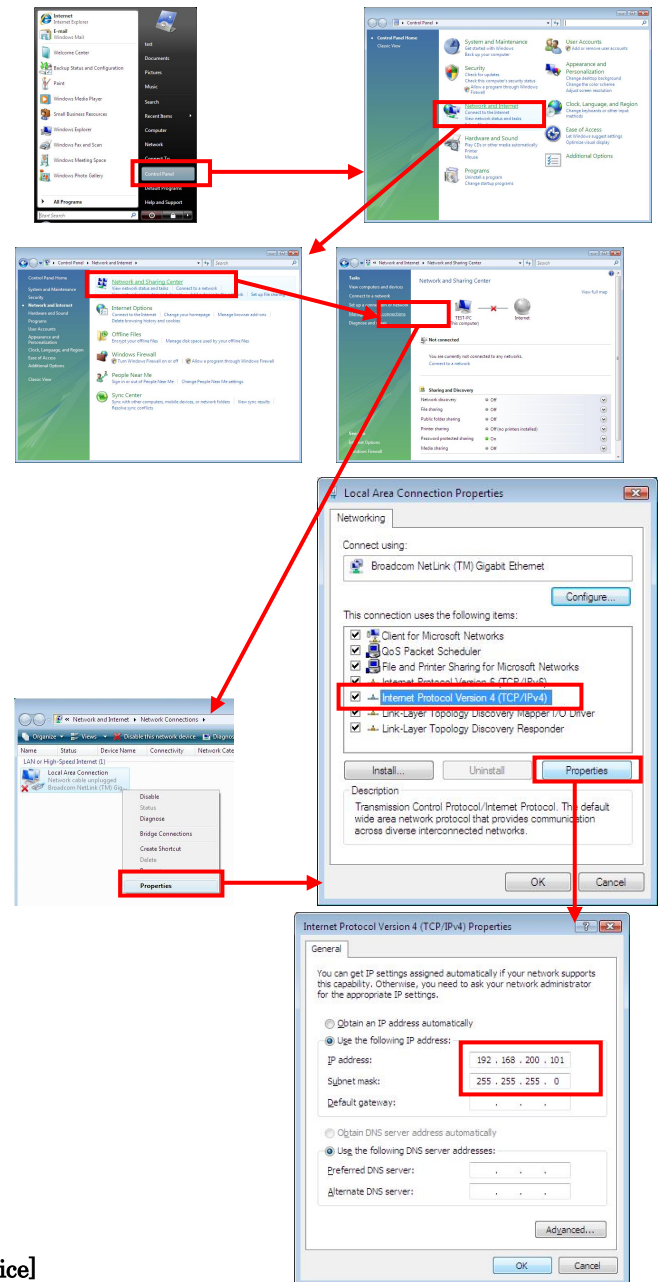
- 1) Open Control Panel from Start.
- 2) From Control Panel, display the Property of Local Area Connection Properties window with a series of operation below:
 - Click on Network and Internet in Control Panel.
 - In the Network and Internet window, click on Network and Sharing Center.
 - In the Network and Sharing Center window, click on Manage network connections (for Windows 7, Change adapter settings) in the Tasks .
 - In the Network Connections window, right click on the Local Area Connection to display the pop up menu, and then click on Properties button.
 - The User Account Control window is displayed, then click Continue button.(For Windows 7, this window is not displayed.)
- 3) In the Local Area Connection Properties dialog box, select Internet Protocol Version4 (TCP/IPv4) and click on the Properties button.
- 4) Set the IP address and Subnet mask.

If the factory setting of the CBM-20A(lite) and SPD-M20A/ M30A/ 30AM have not been changed, input the IP address and the subnet mask for the PC as show below.

Items	Set Values
IP address	192.168.200.101
Subnet mask	255.255.255.0

Click on the OK button after settings are made.

You may be requested to reboot the PC. In that case, follow the instruction and reboot your PC.



[Notice]

CBM-20A(lite) and SPD-M20A/ M30A/ 30AM shipped from the factory have IP addresses "192.168.200.99" and "192.168.200.98" in factory settings. When any PC in the existing LAN has one of these IP addresses, collision of IP address occurs, which prevents from configuring any parameters in CBM-20A(lite) or SPD-M20A/ M30A/ 30AM. In such a case, connect them with the PC in a closed configuration (in isolation from the existing LAN), set their IP addresses, then connect them to the existing LAN. In addition, collision of IP address occurs when two or more CBM-20A(lite)/ SPD-M20A/M30A/30AMs in factory settings are connected simultaneously. In this case, configure them one by one without connecting them to the LAN at once.

- * The above explanation is given provided that the OS of your PC is Windows Vista and Control Panel shows Control Panel Home, or the OS of your PC is Windows 7 and Control Panel shows Category View.
- * When you have changed CBM-20A(lite) and SPD-M20A/ M30A/ 30AM settings, if necessary, change the IP address and Subnet mask of PC to confirm that connection can be made.

2 Setting Internet Explorer for PC (For Windows Vista and Windows 7)

■ Setting Internet Explorer

Set the CBM-20A(lite) and SPD-M20A/ M30A/ 30AM using the Internet Explorer. It is required to change the IE settings including Amount of disk space to use, Security, Advanced etc. Change the IE settings from the Internet Option screen.

Start up IE and click on Tool in the menu followed by Internet Option to display the Internet Option dialog box.

■ Setting of the Disk space to use

- 1) Click on the Settings button of the Browsing history in the General tab to display the setting dialog.
- 2) Set the Disk space to use to "100" and click on the OK button.

■ Security setting (1)

- 1) Select [Local intranet] in the Security tab and click on the Sites button.
- 2) Click on the Advanced button.
- 3) Add URLs of CBM-20A(lite) and SPD-M20A/ M30A/ 30AM.

Input "http://192.168.200.*" and press the Add button. After input, click on the Close button to confirm the set contents.

■ Security setting (2)

Click on the Custom Level button in the Security tab. Set the following items from the setting list.

Items	Setting description
Run ActiveX control and plug-ins	"Enable"
Script ActiveX controls marked safe for scripting	"Enable"
Active scripting	"Enable"
Access data source across domains	"Enable" or "Prompt"
File download	"Enable"

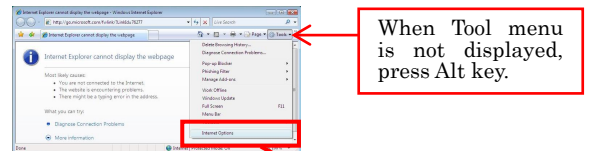
You may be warned with a message saying "Are you sure you want to change the security setting for this zone?" Select Yes in that case.

■ Bypassing proxy server

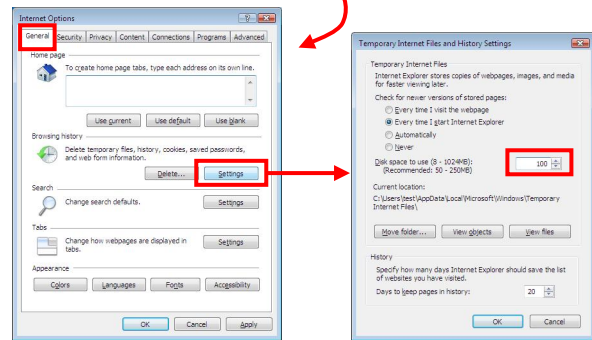
Click on the LAN settings in the Connections tab. When using a proxy server in your LAN, configure the following settings. If no proxy server is used, this setting is not necessary.

- 1) Check the "Use a proxy server for your LAN (These settings will not apply to dial-up or VPN connections)" and the "Bypass proxy server for local addresses" check box.
- 2) Click the Advanced button and add the system controller's URL(192.168.200.*) in "Exceptions".

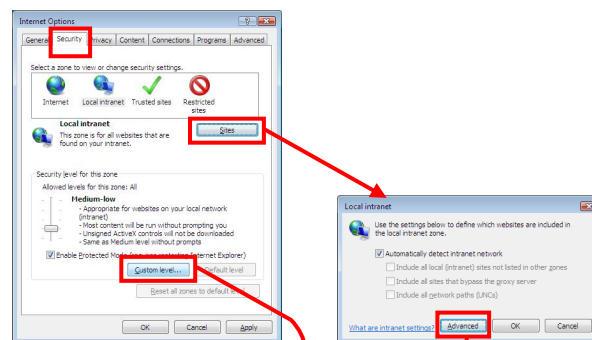
* When the IP addresses of the CBM-20A(lite) and SPD-M20A/ M30A/ 30AM are changed, change the Security setting(1) so that new IP addresses are included in the intranet zone.



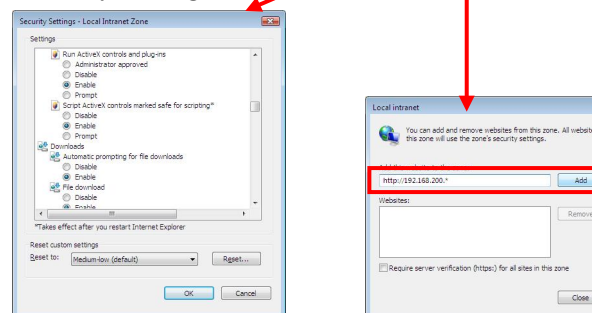
[Setting the disk capacity]



[Setting Security (1)]

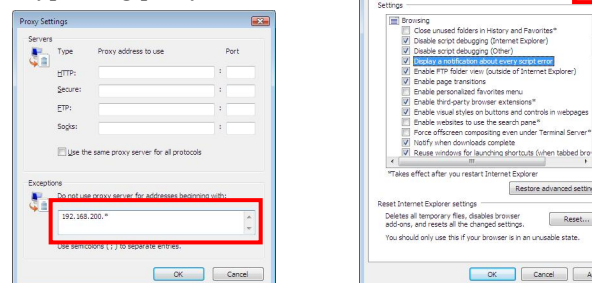


[Security Setting (2)]



[Advanced]

[Bypassing proxy server]



■ Advanced

- 1) Display the Advanced tab.
- 2) Browse to the checkbox "Display a notification about every script error" and select this option.
- 3) Browse to the checkbox "Print background colors and images" and select this option.

1 Setting IP Address for PC (For Windows 10)

This section describes how to change the IP address of PC. CBM-20A(lite) and SPD-M20A/ M30A/ 30AM have the following IP address and Subnet mask set at the time of shipment from the factory.

Table 1 Initial value of the instrument and the IP address

	IP address	Subnet mask
CBM-20A(lite)	192.168.200.99	255.255.255.0
SPD-M20A	192.168.200.98	255.255.255.0
SPD-M30A/30AM	192.168.200.98	255.255.255.0

■ Changing the IP address

- 1) Input "ncpa.cpl" into the search box in taskbar and click "ncpa.cpl (Control panel item)" in the search result.
- 2) Right click on "Ethernet" to display the pop up menu , and then click on the Properties button.
- 3) In the Ethernet Properties dialog box, select Internet Protocol Version4 (TCP/IPv4) and click on the Properties button.
- 4) Set the IP address and Subnet mask.

If the factory setting of the CBM-20A(lite) and SPD-M20A/ M30A/ 30AM have not been changed, input the IP address and the subnet mask for the PC as show below.

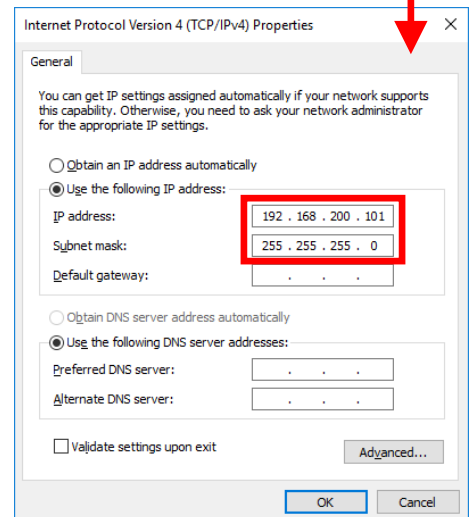
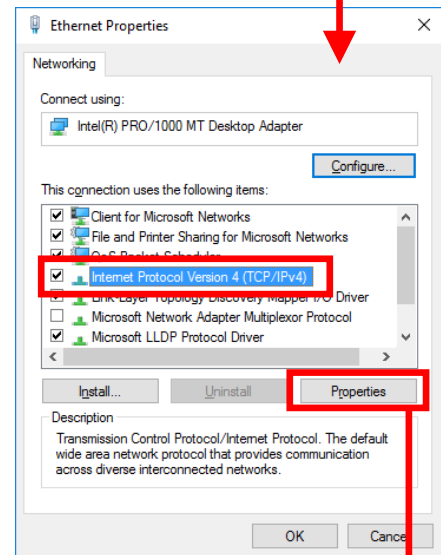
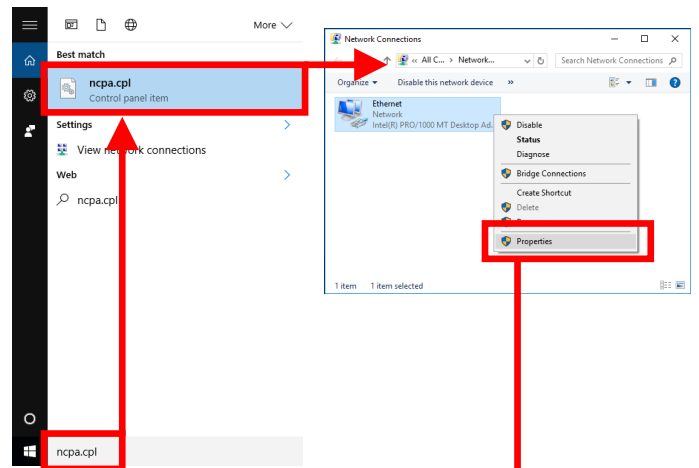
Items	Set Values
IP address	192.168.200.101
Subnet mask	255.255.255.0

Click on the OK button after settings are made.

You may be requested to reboot the PC. In that case, follow the instruction and reboot your PC.

[Notice]

CBM-20A(lite) and SPD-M20A/ M30A/ 30AM shipped from the factory have IP addresses "192.168.200.99" and "192.168.200.98" in factory settings. When any PC in the existing LAN has one of these IP addresses, collision of IP address occurs, which prevents from configuring any parameters in CBM-20A(lite) or SPD-M20A/ M30A/ 30AM. In such a case, connect them with the PC in a closed configuration (in isolation from the existing LAN), set their IP addresses, then connect them to the existing LAN. In addition, collision of IP address occurs when two or more CBM-20A(lite)/ SPD-M20A/M30A/30AMs in factory settings are connected simultaneously. In this case, configure them one by one without connecting them to the LAN at once.



* When you have changed CBM-20A(lite) and SPD-M20A/ M30A/ 30AM settings, if necessary, change the IP address and Subnet mask of PC to confirm that connection can be made.

2 Setting Internet Explorer for PC (For Windows 10)

When Tool menu is not displayed, press Alt key.

■ Setting Internet Explorer

Set the CBM-20A(lite) and SPD-M20A/ M30A/ 30AM using the Internet Explorer. It is required to change the IE settings including Compatibility view settings, Security, Advanced etc.

■ Starting Internet Explorer

Input "IE" into the search box in taskbar and click "Internet Explorer" in the search result.

■ Compatibility view setting

1) Click the Tools icon and then click "Compatibility View settings" to display the Compatibility View Settings dialog box.

2) Add the URL of CBM-20A(lite)

Input "192.168.200.99" and click the Add button.

3) Add the URL of SPD-M20A/SPD-M30A/SPD-30AM

Input "192.168.200.98" and click the Add button.

■ Security setting (1)

1) Click the Tools icon and then click "Internet Options" to display the Internet Options dialog box.

2) Select [Local intranet] in the Security tab and click the Sites button.

3) Click on the Advanced button.

4) Add the URLs of CBM-20A(lite) and SPD-M20A/ M30A/ 30AM.

Input "http://192.168.200.*" and press the Add button. After input, click on the Close button to confirm the set contents.

■ Security setting (2)

Click on the Custom Level button in the Security tab.

Set the following items from the setting list.

Items	Setting description
Run ActiveX control and plug-ins	"Enable"
Script ActiveX controls marked safe for scripting	"Enable"
Active scripting	"Enable"
Access data source across domains	"Enable" or "Prompt"
File download	"Enable"

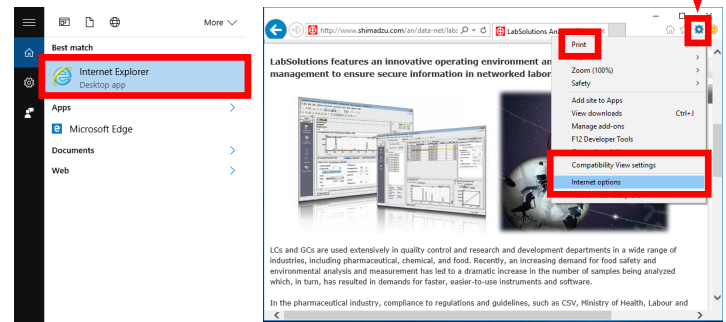
You may be warned with a message saying "Are you sure you want to change the security setting for this zone?" Select Yes in that case.

■ Display a notification about every script error

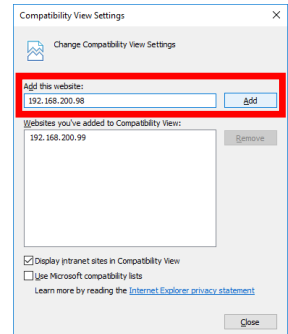
- 1) Display the Advanced tab in the Internet Options.
- 2) Browse to the checkbox "Display a notification about every script error" and select this option.

* It is not possible to connect to the CBM/PDA using the Microsoft Edge.

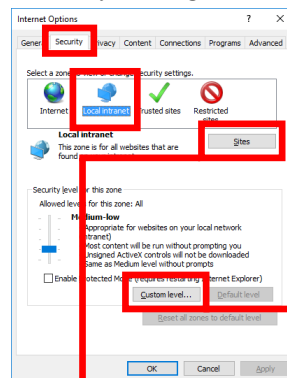
* When the IP addresses of the CBM-20A(lite) and SPD-M20A/ M30A/ 30AM are changed, change the Security setting(1) so that new IP addresses are included in the intranet zone.



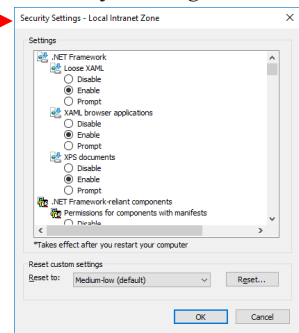
[Compatibility view settings]



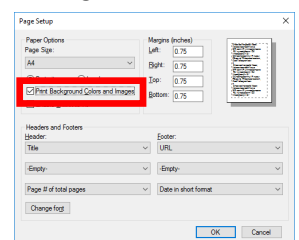
[Security Setting (1)]



[Security Setting (2)]



[Print Background Colors and Images]



■ Print Background Colors and Images

- 1) Click the Tools icon and then select "Print" -> "Page setup" to display the Page Setup dialog box.
- 2) Browse to checkbox "Print Background Colors and Images" and select this option.

■ Bypassing proxy server

When using a proxy server in your LAN, configure the following settings. If no proxy server is used, this setting is not necessary.

- 1) Click on the LAN settings button in the Connections tab.
- 2) Check the "Use a proxy server for your LAN (These settings will not apply to dial-up or VPN connections)" and the "Bypass proxy server for local addresses" check box.
- 3) Click the Advanced button and add the system controller's URL(192.168.200.*) in "Exceptions".