

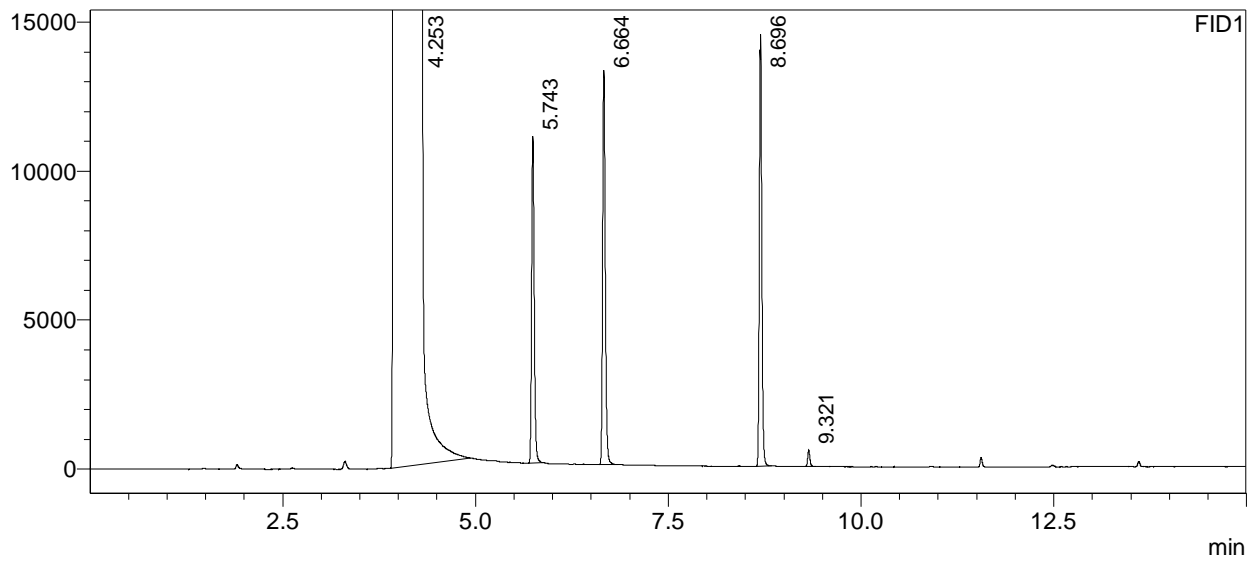
==== Shimadzu LabSolutions Analysis Report ====

Sample Name : Alcohol Mixture
 Sample ID : Standard 100ppm
 Data Filename : Tutorial_Std001.gcd
 Method Filename : Tutorial_Method.gcm
 Batch Filename : Tutorial_Batch.gcb
 Vial # : 1-1
 Injection Volume : 1 uL
 Date Acquired : 4/8/2009 11:16:35 PM
 Date Processed : 4/2/2010 4:07:28 PM

Sample Type : Standard
 Level : 1
 Acquired by : System Administrator
 Processed by : System Administrator

<Chromatogram>

uV



<Peak Table>

FID1

Peak#	Ret. Time	Area	Height	Conc.	Unit	Mark	Name
1	4.253	215234087	20972561	0.000			
2	5.743	25526	10934	100.000	ppm		1-Propylalcohol
3	6.664	31725	13122	100.000	ppm		Isobutylalcohol
4	8.696	31972	14335	100.000	ppm		Isoamylalcohol
5	9.321	1053	543	0.000			
Total		215324364	21011495				

<Method>**<Analytical Line 1>****<<Injection Port SPL>>**

Injection Mode : Split
 Temperature : 250.0 C
 Carrier Gas : He
 Flow Control Mode : Velocity
 Pressure : 80.4 kPa
 Total Flow : 69.0 mL/min
 Column Flow : 2.54 mL/min
 Linear Velocity : 40.0 cm/sec
 Purge Flow : 3.0 mL/min
 Split Ratio : 25.0

<<Column Oven>>

Temperature Program	:	Total Program Time	:	15.00 min
		Rate(C/min)		Temperature(C)
		-----		Hold Time(min)
1		10.0		50.0
				150.0
				3.00
				2.00

<<Column Information>>

Column Name : Stabilwax
 Film Thickness : 0.50 um
 Column Length : 30.0 m
 Inner Diameter : 0.32 mm ID

<<Detector 1 FID1>>

Temperature : 250.0 C
 Delay Time : 0.00 min
 Makeup Gas : He
 Makeup Flow : 30.0 mL/min
 H2 Flow : 40.0 mL/min
 Air Flow : 400.0 mL/min

<<Peak Integration>>**<FID1>**

Width	:	3 sec	Slope	:	1000 uV/min
Drift	:	0 uV/min	T.DBL	:	1000 min
Min.Area/Height	:	1000 counts			

<<Integration Time Program(Method)>>**<FID1>**

Time Program : None

<<Integration Time Program(Data)>>**<FID1>**

Time Program : None

<<Quantitative>>**<FID1>**

Quantitative Method	:	External Standard	Calculated by	:	Area
# of Calibration Levels	:	3	Curve Fit Type	:	Linear
Zero	:	Not Forced	Weighting Method	:	
Units	:	ppm	Group Type	:	Not Used

<<Identification>>**<FID1>**

Window/Band	:	Window	Window	:	5.00 %
Identification Method	:	Absolute	Peak Selection	:	All Peaks
Retention Time Update	:	None			