

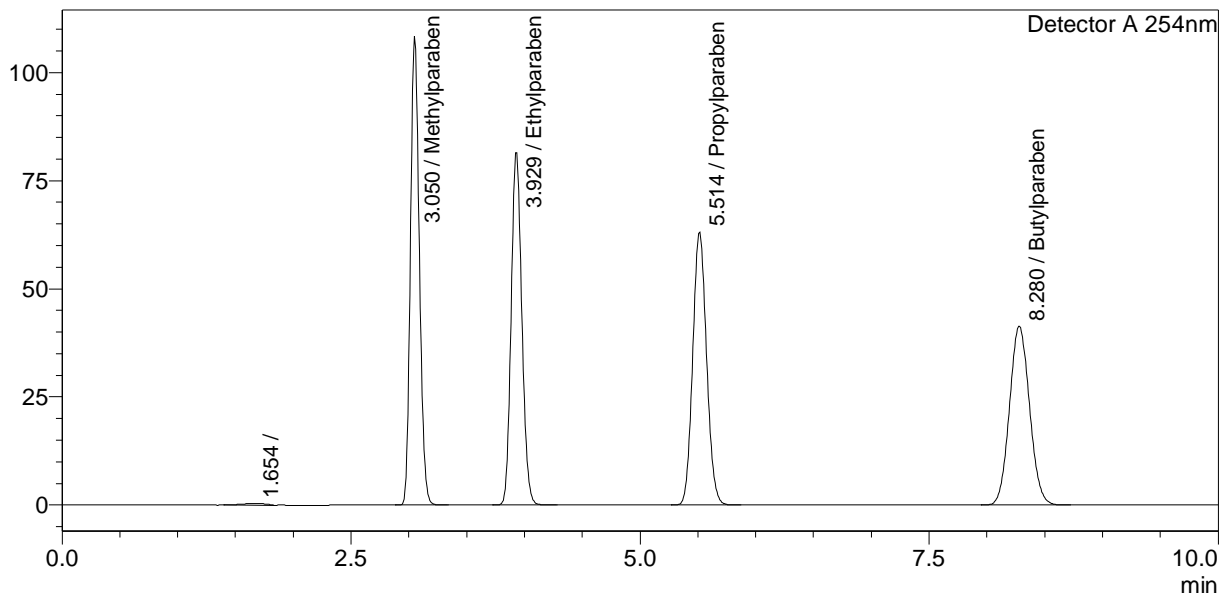
# ==== Shimadzu LabSolutions Analysis Report =====

Sample Name : Paraben Mixture  
 Sample ID : Standard 10ppm  
 Data Filename : Tutorial\_Std001.lcd  
 Method Filename : Tutorial\_Method.lcm  
 Batch Filename : Tutorial\_Batch.lcb  
 Vial # : 1-1  
 Injection Volume : 10 uL  
 Date Acquired : 5/12/2009 3:19:25 AM  
 Date Processed : 4/2/2010 4:02:25 PM

Sample Type : Standard  
 Level : 1  
 Acquired by : System Administrator  
 Processed by : System Administrator

## <Chromatogram>

mV



## <Column Performance>

Detector A

ID#	Name	Ret. Time	Area	Height	NTP	Asymmetry	Resolution	Mark
1	Methylparaben	3.050	582618	108362	6143	1.156	5.155	
2	Ethylparaben	3.929	524834	81456	7505	1.125	5.216	
3	Propylparaben	5.514	527264	63086	9174	1.092	7.697	
4	Butylparaben	8.280	494089	41385	10558	1.069	10.013	
Total			2128806	294289				