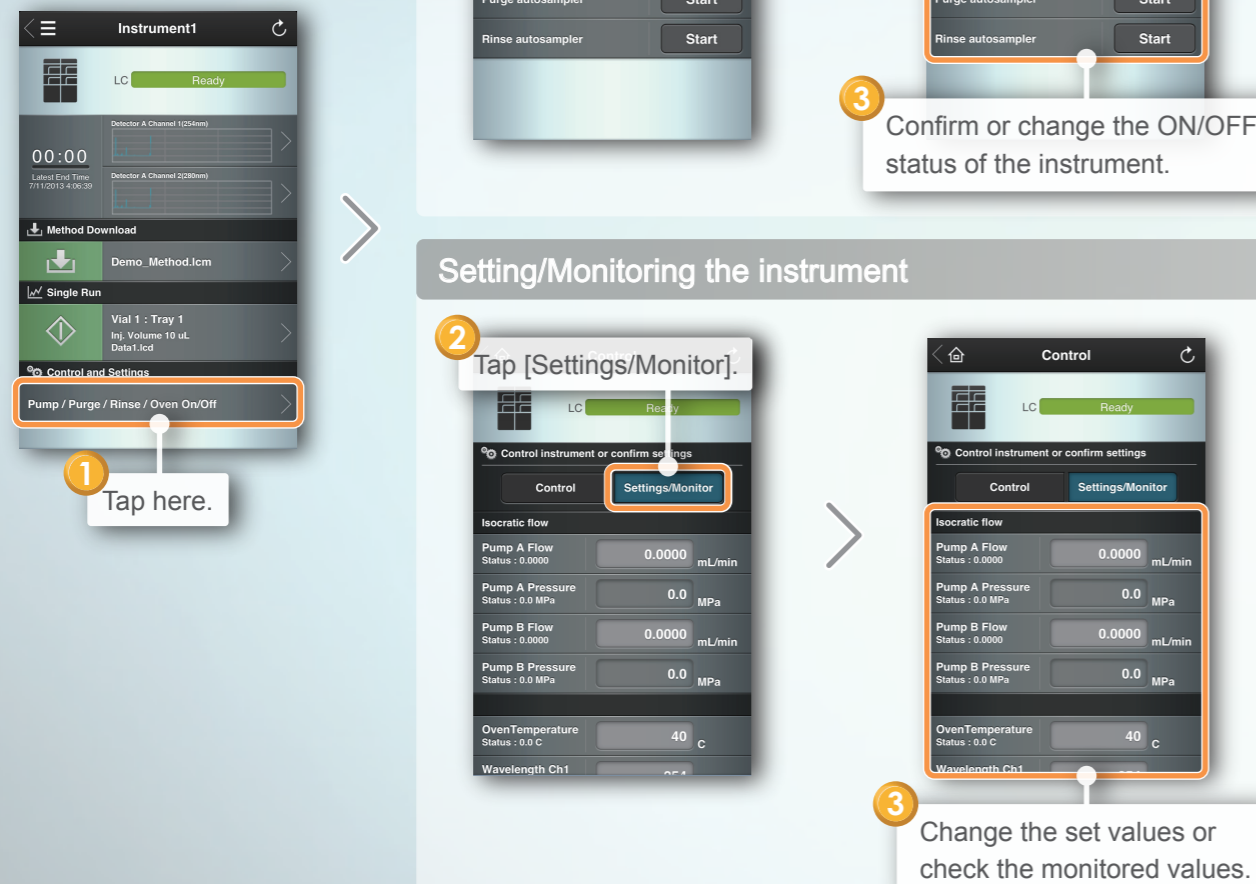


6. Controlling the Instrument and Confirming Settings

Controlling the instrument

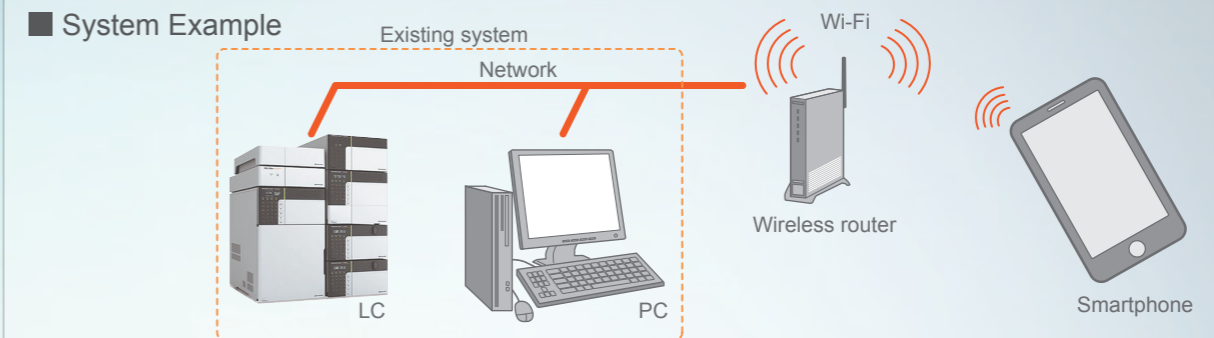


Setting/Monitoring the instrument



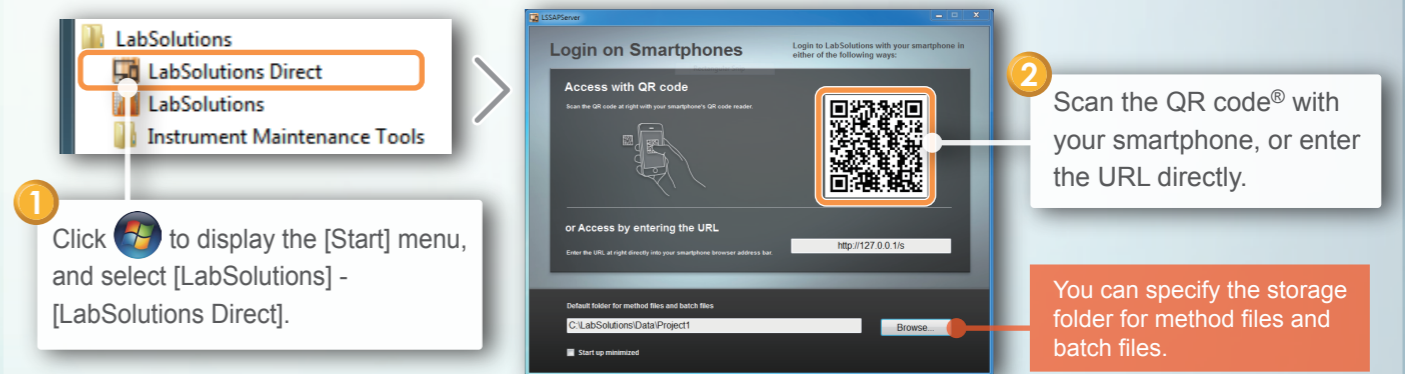
LabSolutions Direct Quick Guide

“LabSolutions Direct” enables you to control LC systems (incl. setting parameters, running analysis, and system monitoring) from your smartphone, simply by adding a wireless router to the existing system. To use this feature, there is no need to install any special app on your smartphone. You can access to the system using any smartphone browser.

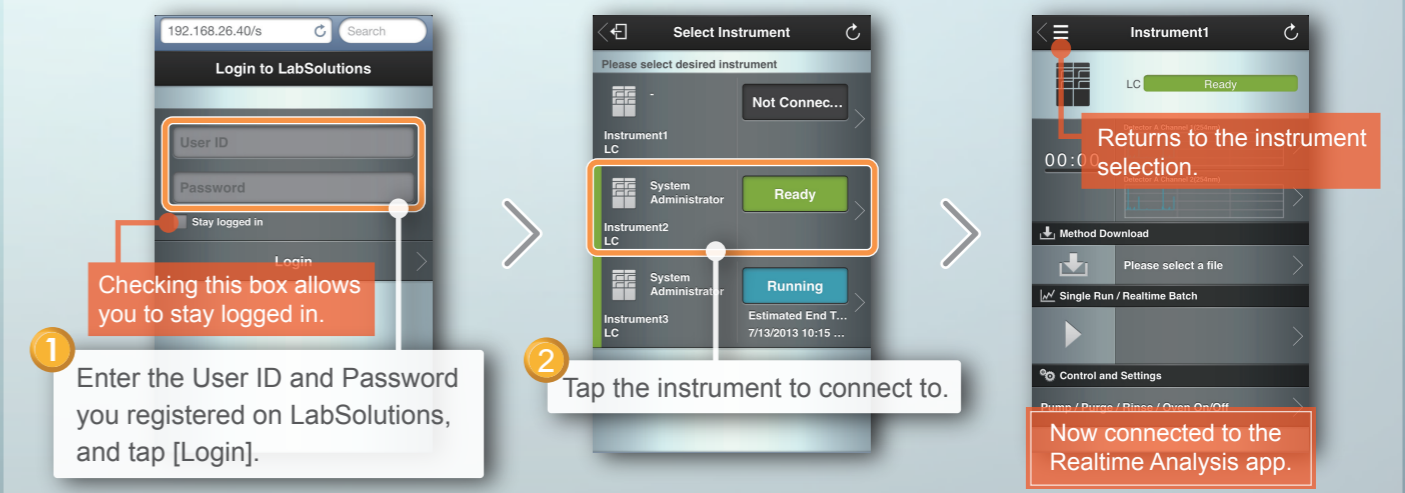


- Notes**
- To construct and operate a wireless LAN environment, consult the network administrator of the department or office that the system belongs to.
 - Be sure to use only a wireless router where the manufacturer guarantees or has confirmed access from a smartphone.
 - To introduce a wireless LAN, be sure to configure encryption settings. For details, refer to the wireless router manuals.

1. Connecting to LabSolutions (from PC)



2. Login from Smartphone



* “QR code®” is a registered trademark of Denso Wave Inc.

Shimadzu Corporation

SHIMADZU CORPORATION. International Marketing Division
3. Kanda-Nishikicho 1-chome, Chiyoda-ku, Tokyo 101-8448, Japan
Phone: 81(3)3219-5641 Fax: 81(3)3219-5710

SHIMADZU SCIENTIFIC INSTRUMENTS, INC.
7102 Riverwood Drive, Columbia, Maryland 21046, U.S.A.
Phone: 1(410)381-1227 Fax: 1(410)381-1222 Toll Free: 1(800)477-1227

SHIMADZU EUROPA GmbH
Albert-Hahn-Strasse 6-10, 47269 Duisburg, F.R. Germany
Phone: 49(203)7687-0 Fax: 49(203)7666-25

SHIMADZU (ASIA PACIFIC) PTE LTD.
79 Science Park Drive #02-01/08, Cintech IV Singapore Science Park I, Singapore 118264, Singapore
Phone: 65-6778-6280 Fax: 65-6779-2935

SHIMADZU SCIENTIFIC INSTRUMENTS (OCEANIA) PTY. LTD.
Units F, 10-16 South Street Rydalmere N.S.W. 2116, Australia
Phone: 61(2)9684-4200 Fax: 61(2)9684-4055

SHIMADZU DO BRASIL COMÉRCIO LTDA.
Avenida Marquês de São Vicente, 1771. Barra Funda CEP: 01139-003-São Paulo-SP, Brasil
Phone: 55(11)2134-1688 Fax: 55(11)3611-2209

SHIMADZU (HONG KONG) LIMITED
Suite 1028 Ocean Center, Harbour City, Tsim Sha Tsui, Kowloon HONG KONG
Phone: (852)2375-4979 Fax: (852)2199-7438

SHIMADZU INTERNATIONAL TRADING (SHANGHAI) CO., LTD. PUXI BRANCH
Block E, No.570 West Huaihai Road, Shanghai, 200052 P.R. of China
Phone: 86(21)2201-3888 Fax: 86(21)2201-3666

SHIMADZU MIDDLE EAST & AFRICA FZE
Warehouse No. RA08UC02, Jebel Ali, Dubai, P.O. Box 262081 United Arab Emirates
Phone: 971(4)883-6668 Fax: 971(4)883-6808

URL <http://www.shimadzu.com>

3. Checking Chromatograms or Instrument Status

1 Tap here.

2 Check the chromatograms.

3 Tap [Select items to monitor].

4 Select the items to monitor and check the status.

4. Downloading Method Files

1 Tap here.

2 Select the method file to download.

3 Tap the download button.

5. Starting Analysis

For batch analysis

1 Tap here.

2 Tap [Realtime Batch].

3 Tap here.

4 Select a batch file.

5 Confirm the batch file content.

6 Tap here to return to the home screen.

7 Tap here to start the batch analysis.

Displays remaining analysis time.

For single analysis

1 Tap here.

2 Tap [Single Run].

3 Set the single analysis parameters.

4 Tap here to return to the home screen.

5 Tap here to start single analysis.

Tap here to stop the analysis.